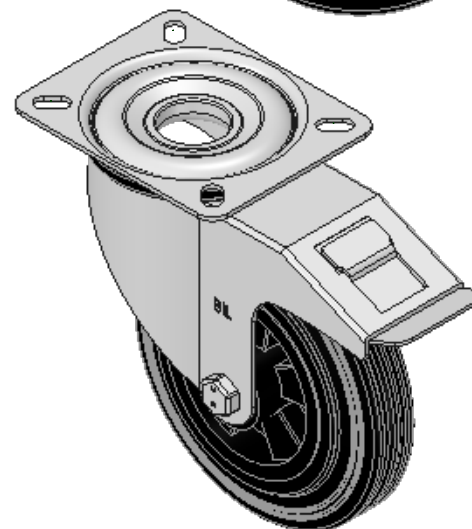
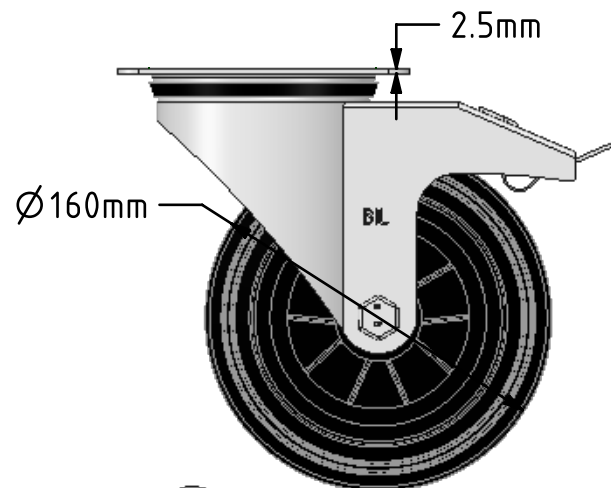
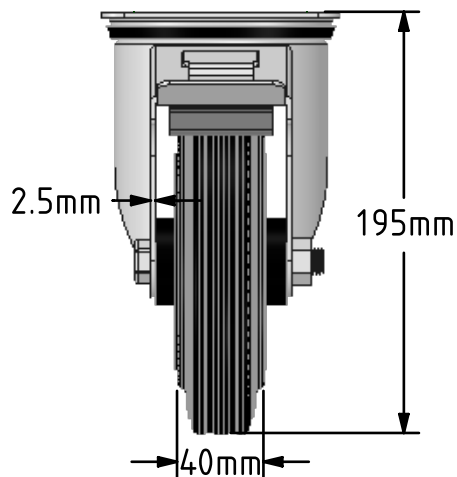
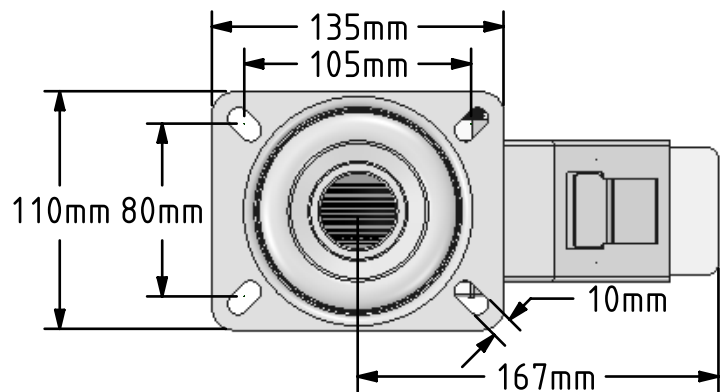


DRAWING DISCLAIMER
 COPYRIGHT OF THIS DRAWING IS RESERVED BY BIL GROUP LTD. IT IS ISSUED ON CONDITION THAT IT IS NOT REPRODUCED, COPIED, OR DISCLOSED TO A THIRD PARTY EITHER WHOLLY OR IN PART WITHOUT THE CONSENT IN WRITING OF BIL GROUP LTD.



Description:
 BZMM160PSSWB

Pressed steel swivel castor with a flat top plate fixing fitted with a black rubber tyre on black polypropylene centred wheel with plain bore and total lock brake. Wheel diameter 160mm, tread width 40mm, overall height 195mm, plate size 135mm x 110mm, hole centres 105mm x 80mm. Load capacity 140kg



	NAME	DATE
DRAWN	Matt	03/08/18
APPROVED BY	Chris	03/08/18
SCALE	2:7	03/08/18
WEIGHT	2.148kg	03/08/18

UNLESS OTHERWISE SPECIFIED DIMENSIONS ARE IN MILLIMETRES
 Unspecified Tolerances
 Machining ± 0.25mm
 Fabrication ± 1mm

 BIL Group Ltd, Porte Marsh Road, Calne Wiltshire, SN11 9BW, United Kingdom
 Tel +44 (0)1249 822 222 Fax: +44 (0)1249 822 300
 www.bilgroup.co.uk

TITLE
BZMM160PSSWB

SIZE	DWG NO.	REV
A4	BILCW03BZMM160PSSWB_01	1

FILE NAME BILCW03BZMM160PSSWB_01.PDF SHEET 1 OF 1