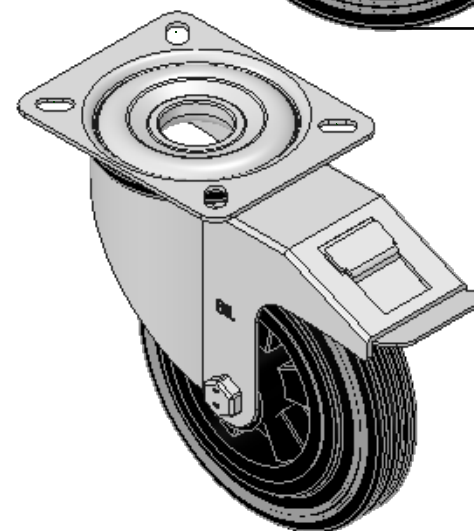
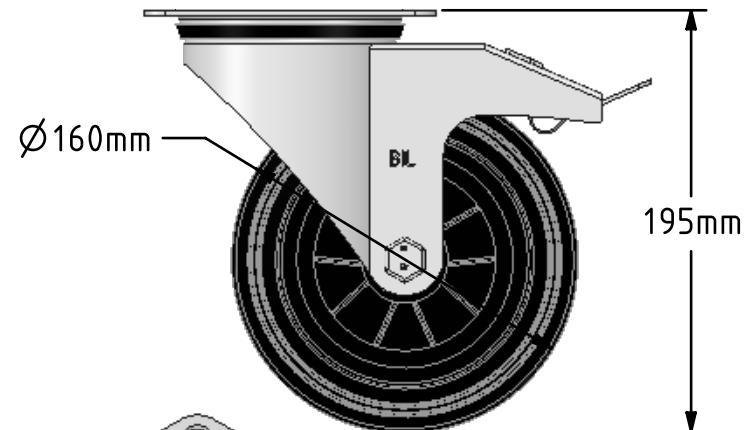
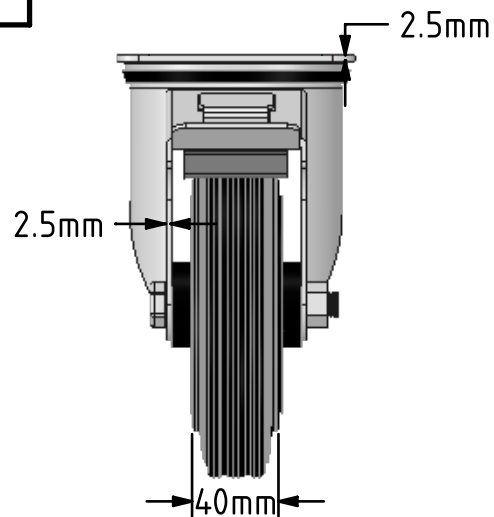
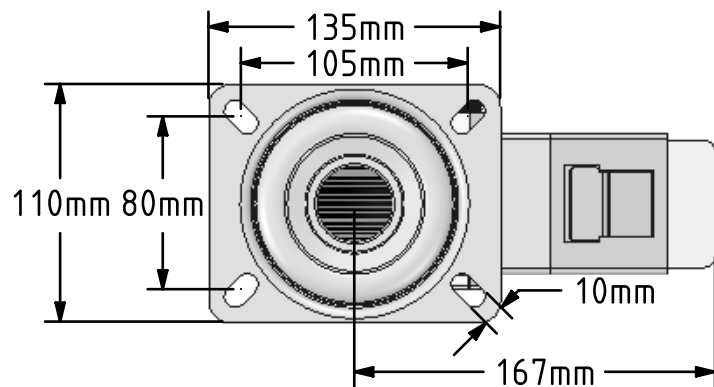



**DRAWING DISCLAIMER**  
 COPYRIGHT OF THIS DRAWING IS RESERVED BY BIL GROUP LTD. IT IS ISSUED ON CONDITION THAT IT IS NOT REPRODUCED, COPIED, OR DISCLOSED TO A THIRD PARTY EITHER WHOLLY OR IN PART WITHOUT THE CONSENT IN WRITING OF BIL GROUP LTD.



**Description:**  
 BZMM160PSBSWB

Pressed steel swivel castor with a flat top plate fixing fitted with a black rubber tyre on black polypropylene centred wheel with roller bearing and total lock brake. Wheel diameter 160mm, tread width 40mm, overall height 195mm, plate size 140mm x 110mm, hole centres 105mm x 80mm. Load capacity 140kg.



	NAME	DATE	 BIL Group Ltd, Porte Marsh Road, Calne Wiltshire, SN11 9BW, United Kingdom Tel +44 (0)1249 822 222 Fax: +44 (0)1249 822 300 www.bilgroup.co.uk	
DRAWN	Matt	03/08/18	TITLE <b>BZMM160PSBSWB</b>	
APPROVED BY	Chris	03/08/18		
SCALE	2:7	03/08/18		
WEIGHT	2.2kg	03/08/18		
UNLESS OTHERWISE SPECIFIED DIMENSIONS ARE IN MILLIMETRES  Unspecified Tolerances Machining ± 0.25mm Fabrication ± 1mm			SIZE A4	DWG NO. BILCW03BZMM160PSBSWB_01
			REV 1	FILE NAME BILCW03BZMM160PSBSWB_01.PDF
			SHEET 1 OF 1	