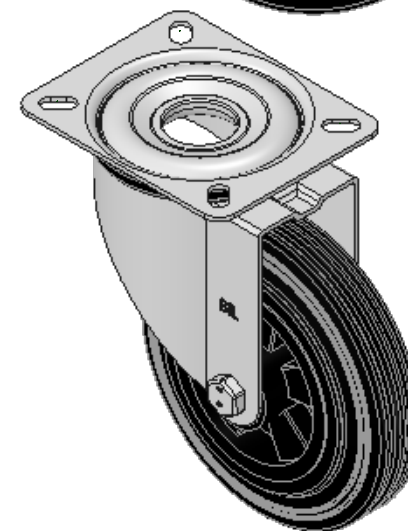
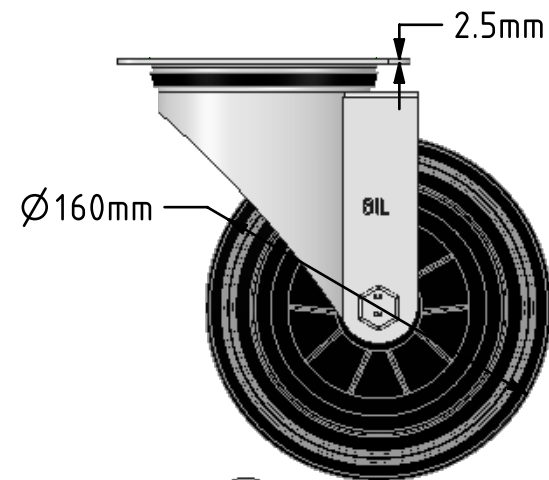
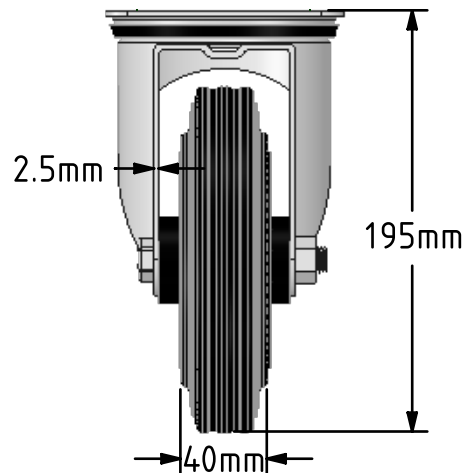
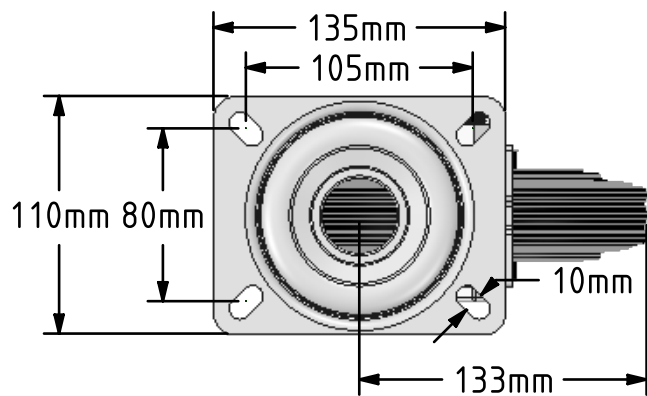


DRAWING DISCLAIMER  
 COPYRIGHT OF THIS DRAWING IS RESERVED BY BIL GROUP LTD. IT IS ISSUED ON CONDITION THAT IT IS NOT REPRODUCED, COPIED, OR DISCLOSED TO A THIRD PARTY EITHER WHOLLY OR IN PART WITHOUT THE CONSENT IN WRITING OF BIL GROUP LTD.



Description:  
 BZMM160PSB

Pressed steel swivel castor with a top plate fixing fitted with a black rubber tyre black polypropylene centred wheel with a roller bearing. Wheel diameter 160mm, tread width 40mm, overall height 195mm, top plate 140mm x 110mm, hole centres 105mm x 80mm. Load capacity 140kg.



	NAME	DATE
DRAWN	Matt	03/08/18
APPROVED BY	Chris	03/08/18
SCALE	2:7	03/08/18
WEIGHT	1.932kg	03/08/18

UNLESS OTHERWISE SPECIFIED DIMENSIONS ARE IN MILLIMETRES

Unspecified Tolerances  
 Machining ± 0.25mm  
 Fabrication ± 1mm



BIL Group Ltd, Porte Marsh Road, Calne  
 Wiltshire, SN11 9BW, United Kingdom  
 Tel +44 (0)1249 822 222 Fax: +44 (0)1249 822 300  
 www.bilgroup.co.uk

TITLE

BZMM160PSB

SIZE DWG NO.

A4

BILCW03BZMM160PSB\_02

REV

2

FILE NAME

BILCW03BZMM160PSB\_02.PDF

SHEET 1 OF 1