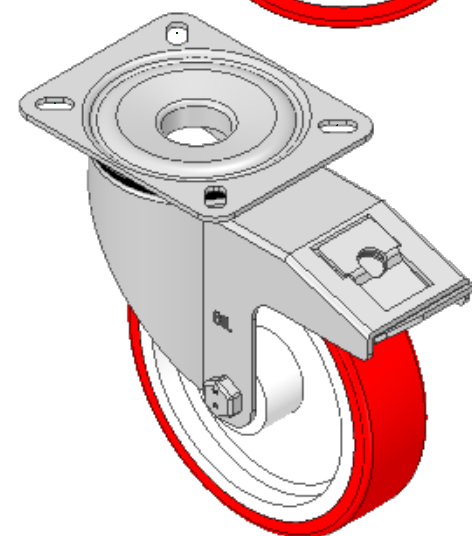
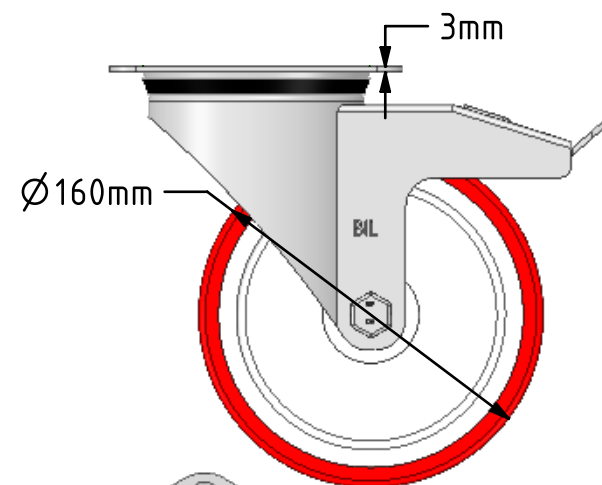
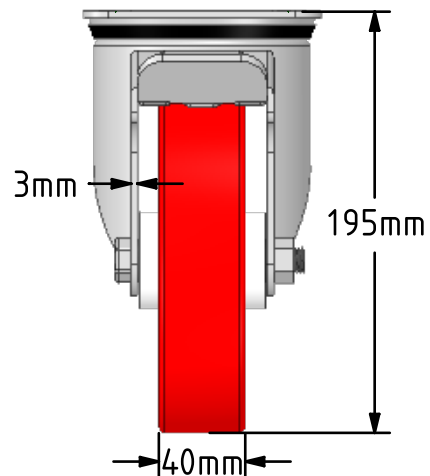
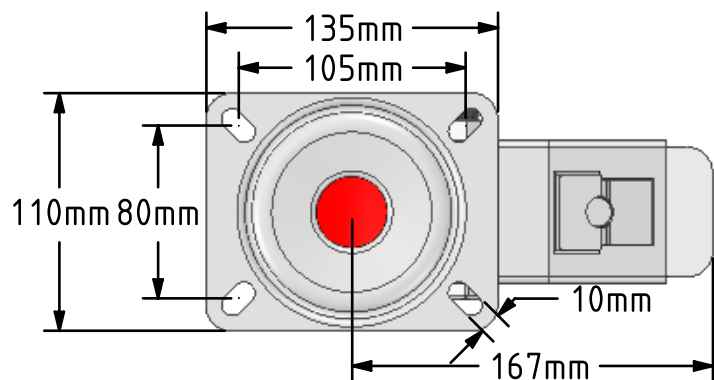


DRAWING DISCLAIMER
 COPYRIGHT OF THIS DRAWING IS RESERVED BY BIL GROUP LTD. IT IS ISSUED ON CONDITION THAT IT IS NOT REPRODUCED, COPIED, OR DISCLOSED TO A THIRD PARTY EITHER WHOLLY OR IN PART WITHOUT THE CONSENT IN WRITING OF BIL GROUP LTD.



Description:
 BZMM160NPBSWB

Pressed steel swivel castor with a top plate fixing fitted with a red polyurethane tyred nylon centred roller bearing wheel and a total lock brake. Wheel diameter 160mm, tread width 40mm, overall height 195mm, top plate 135mm x 110mm, hole centres 105mm x 80mm. Load capacity 400kg.



	NAME	DATE
DRAWN	Matt	08/04/19
APPROVED BY	Tim W	08/04/19
SCALE	2:7	08/04/19
WEIGHT	2.317kg	08/04/19

UNLESS OTHERWISE SPECIFIED DIMENSIONS ARE IN MILLIMETRES

Unspecified Tolerances
 Machining ± 0.25mm
 Fabrication ± 1mm



BIL Group Ltd, Porte Marsh Road, Calne
 Wiltshire, SN11 9BW, United Kingdom
 Tel +44 (0)1249 822 222 Fax: +44 (0)1249 822 300
 www.bilgroup.co.uk

TITLE

BZMM160NPBSWB

SIZE DWG NO.
 A4 BILCW03BZMM160NPBSWB_02

REV
 2

FILE NAME BILCW03BZMM160NPBSWB_02.PDF SHEET 1 OF 1