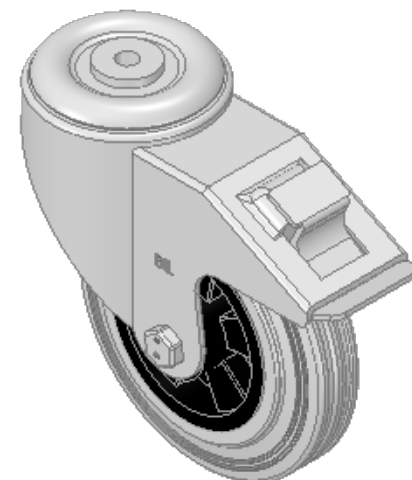
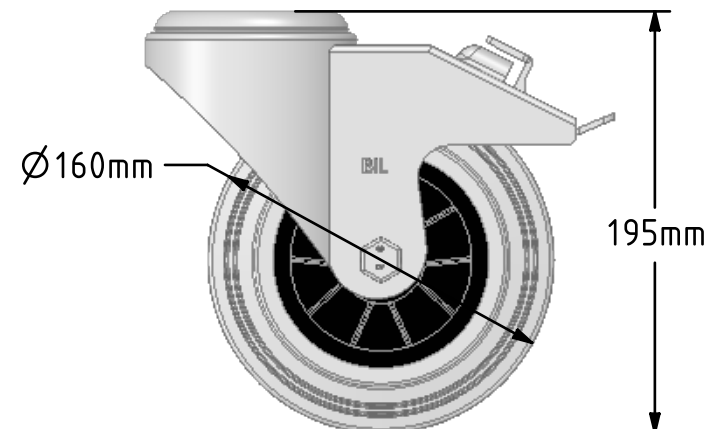
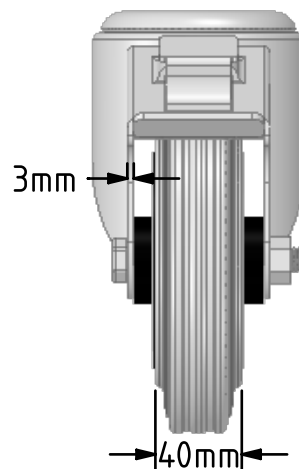
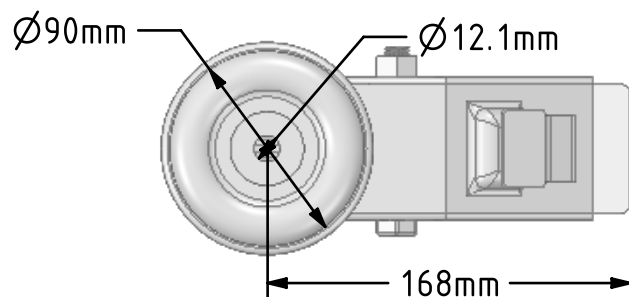


**DRAWING DISCLAIMER**


COPYRIGHT OF THIS DRAWING IS RESERVED BY BIL GROUP LTD. IT IS ISSUED ON CONDITION THAT IT IS NOT REPRODUCED, COPIED, OR DISCLOSED TO A THIRD PARTY EITHER WHOLLY OR IN PART WITHOUT THE CONSENT IN WRITING OF BIL GROUP LTD.

**Description:**

BZMM160GRBBH12SWB

Pressed steel swivel castor with a 12mm bolt hole fitted with a grey rubber tyre black polypropylene centred wheel with a roller bearing and total lock brake. Wheel diameter 160mm, tread width 40mm, overall height 195mm, Load capacity 140kg.



	NAME	DATE	 <div>BIL Group Ltd, Porte Marsh Road, Calne Wiltshire, SN11 9BW, United Kingdom Tel +44 (0)1249 822 222 Fax: +44 (0)1249 822 300 www.bilgroup.co.uk</div>		
DRAWN	Matt	31/08/18			
APPROVED BY	Chris	31/08/18			
SCALE	2:1	31/08/18			
WEIGHT	2.545kg	31/08/18			
<div>UNLESS OTHERWISE SPECIFIED DIMENSIONS ARE IN MILLIMETRES</div> <div>Unspecified Tolerances Machining ± 0.25mm Fabrication ± 1mm</div>			TITLE		
			BZMM160GRBBH12SWB		
			SIZE	DWG NO.	REV
			A4	BILCW03BZMM160GRBBH12SWB__01	1
			FILE NAME BILCW03BZMM160GRBBH12SWB__01.PDF SHEET 1 OF 1		