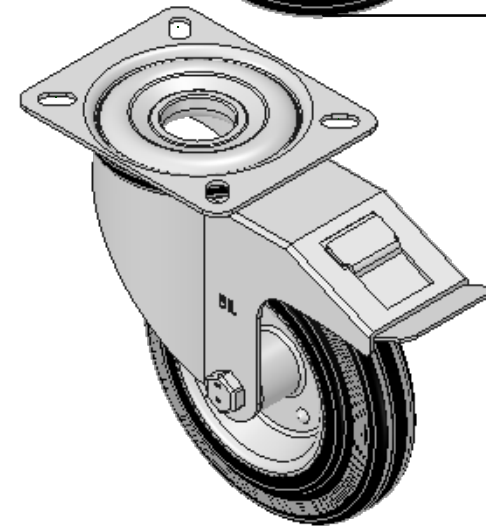
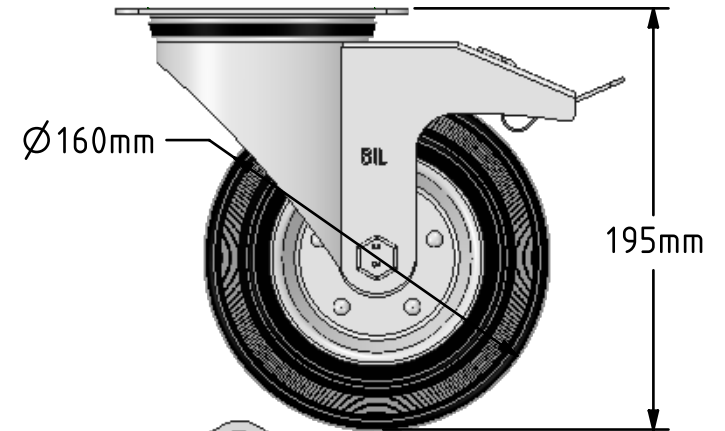
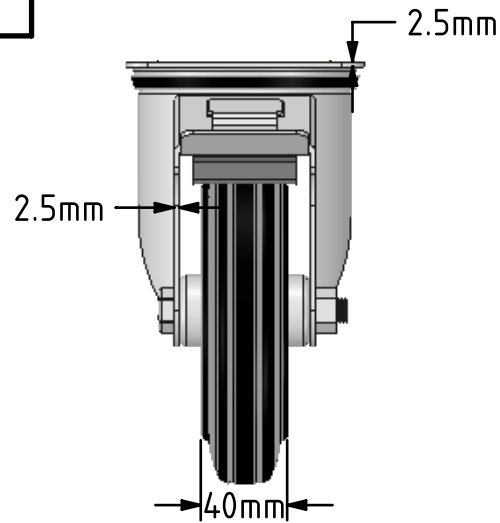
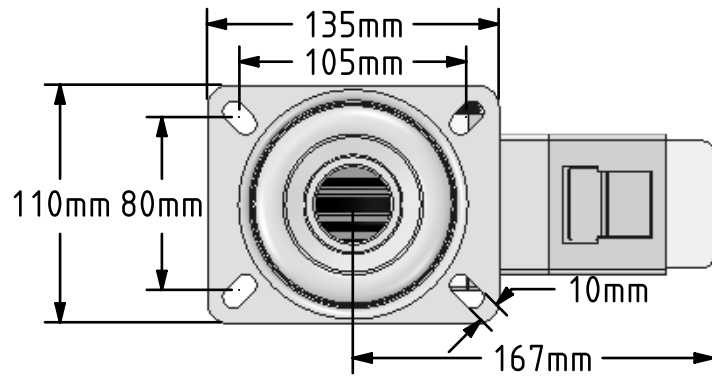


**DRAWING DISCLAIMER**

COPYRIGHT OF THIS DRAWING IS RESERVED BY BIL GROUP LTD. IT IS ISSUED ON CONDITION THAT IT IS NOT REPRODUCED, COPIED, OR DISCLOSED TO A THIRD PARTY EITHER WHOLLY OR IN PART WITHOUT THE CONSENT IN WRITING OF BIL GROUP LTD.

**Description:**

BZMM160BSBSWB

Pressed steel swivel castor with a top plate fixing fitted with a black rubber tyre pressed steel centre wheel with a roller bearing and total lock brake. Wheel diameter 160mm, tread width 40mm, overall height 195mm, top plate 135mm x 110mm, hole centres 105mm x 80/75mm. Load capacity 160kg.



	NAME	DATE
DRAWN	Matt	10/07/18
APPROVED BY	Tim W	10/07/18
SCALE	2:1	10/07/18
WEIGHT	2.187kg	10/07/18

UNLESS OTHERWISE SPECIFIED DIMENSIONS ARE IN MILLIMETRES

Unspecified Tolerances  
Machining  $\pm 0.25\text{mm}$   
Fabrication  $\pm 1\text{mm}$



BIL Group Ltd, Porte Marsh Road, Calne  
Wiltshire, SN11 9BW, United Kingdom  
Tel +44 (0)1249 822 222 Fax: +44 (0)1249 822 300  
www.bilgroup.co.uk

TITLE

BZMM160BSBSWB

SIZE DWG NO.

A4

BILCW03BZMM160BSBSWB\_01

REV

1

FILE NAME BILCW03BZMM160BSBSWB\_01.PDF SHEET 1 OF 1