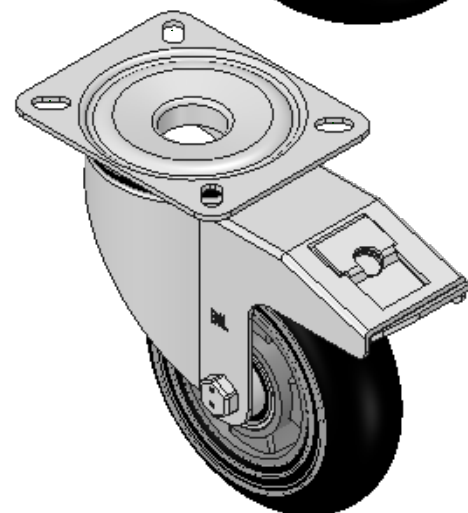
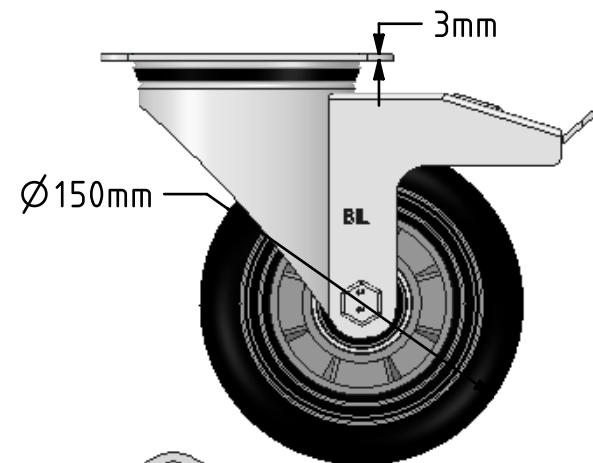
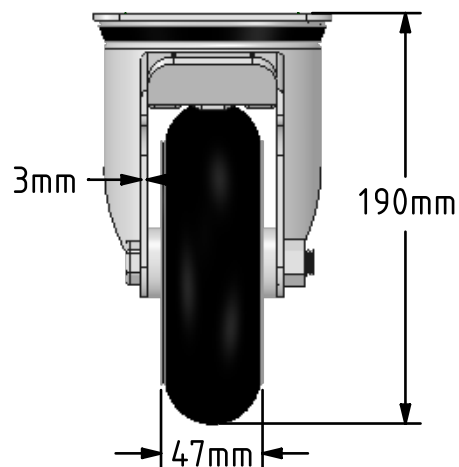
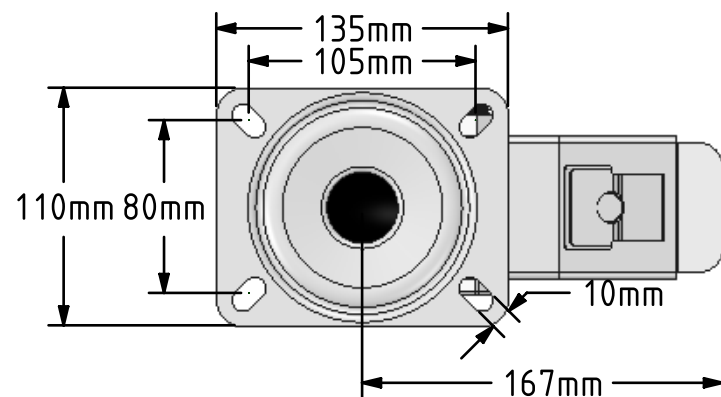


DRAWING DISCLAIMER

COPYRIGHT OF THIS DRAWING IS RESERVED BY BIL GROUP LTD. IT IS ISSUED ON CONDITION THAT IT IS NOT REPRODUCED, COPIED, OR DISCLOSED TO A THIRD PARTY EITHER WHOLLY OR IN PART WITHOUT THE CONSENT IN WRITING OF BIL GROUP LTD.

**Description:**

BZMM150SRERBJSWB

Pressed steel swivel castor with a top plate fixing fitted with an ergonomic black high elastic natural 55 shore A round profile rubber wheel on aluminium centre with ball bearings and total lock brake. Wheel diameter 150mm, tread width 47mm, overall height 190mm, top plate 135mm x 110mm, hole centres 105mm x 80mm. Load capacity 270kg. REACH compliant also PAH-Free rubber to confirm to EU-directive 2005/69/EC, also available with flat tread details on request



	NAME	DATE
DRAWN	Matt	08/08/18
APPROVED BY	Tim W	08/08/18
SCALE	2:1	08/08/18
WEIGHT	2.678kg	08/08/18

UNLESS OTHERWISE SPECIFIED DIMENSIONS ARE IN MILLIMETRES

Unspecified Tolerances
Machining $\pm 0.25\text{mm}$
Fabrication $\pm 1\text{mm}$



BIL Group Ltd, Porte Marsh Road, Calne
Wiltshire, SN11 9BW, United Kingdom
Tel +44 (0)1249 822 222 Fax: +44 (0)1249 822 300
www.bilgroup.co.uk

TITLE

BZMM150SRERBJSWB

SIZE DWG NO.

A4

BILCW03BZMM150SRERBJSWB_01

REV

1

FILE NAME BILCW03BZMM150SRERBJSWB_01.PDF SHEET 1 OF 1