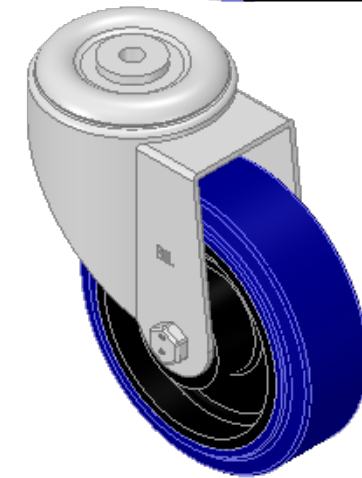
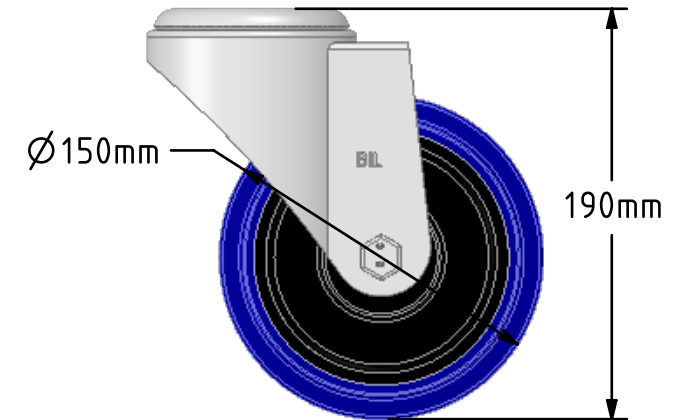
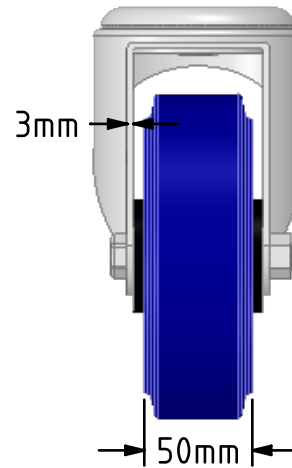
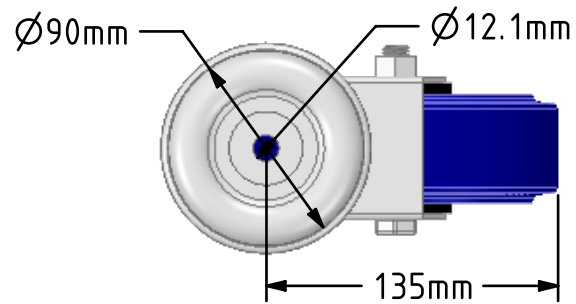


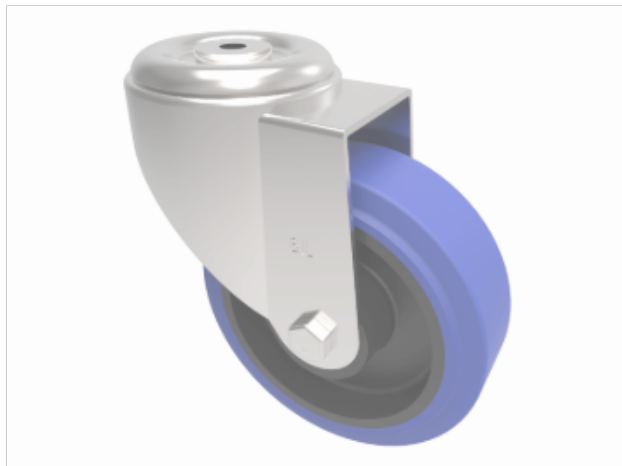
DRAWING DISCLAIMER


COPYRIGHT OF THIS DRAWING IS RESERVED BY BIL GROUP LTD. IT IS ISSUED ON CONDITION THAT IT IS NOT REPRODUCED, COPIED, OR DISCLOSED TO A THIRD PARTY EITHER WHOLLY OR IN PART WITHOUT THE CONSENT IN WRITING OF BIL GROUP LTD.

**Description:**

BZMM150RNBBH12

Pressed steel swivel castor with a 12mm bolt hole fixing fitted with a blue 75 shore A elastic rubber tyre on a black nylon centre with a roller bearing. Wheel diameter 150mm, tread width 50mm, overall height 190mm, load capacity 300kg.



| | NAME | DATE |  BIL Group Ltd, Porte Marsh Road, Calne Wiltshire, SN11 9BW, United Kingdom Tel +44 (0)1249 822 222 Fax: +44 (0)1249 822 300 www.bilgroup.co.uk | |
|---|---------|----------|--|----------|
| DRAWN | Matt | 31/08/18 | | |
| APPROVED BY | Chris | 31/08/18 | | |
| SCALE | 2:7 | 31/08/18 | | |
| WEIGHT | 1.967kg | 31/08/18 | | |
| UNLESS OTHERWISE SPECIFIED DIMENSIONS ARE IN MILLIMETRES | | | TITLE | |
| Unspecified Tolerances Machining $\pm 0.25\text{mm}$ Fabrication $\pm 1\text{mm}$ | | | BZMM150RNBBH12 | |
| | | | SIZE A4 | REV 1 |
| | | | FILE NAME BILCW03BZMM150RNBBH12_01.PDF SHEET 1 OF 1 | |