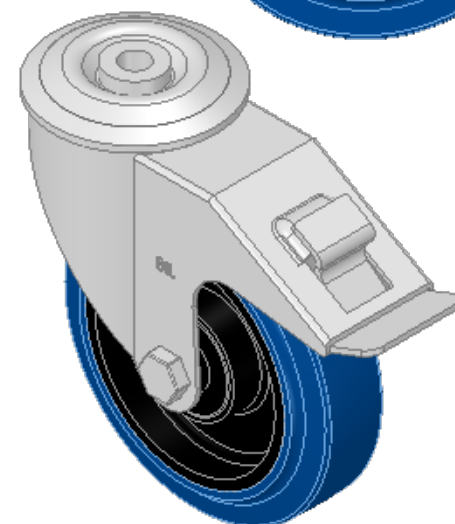
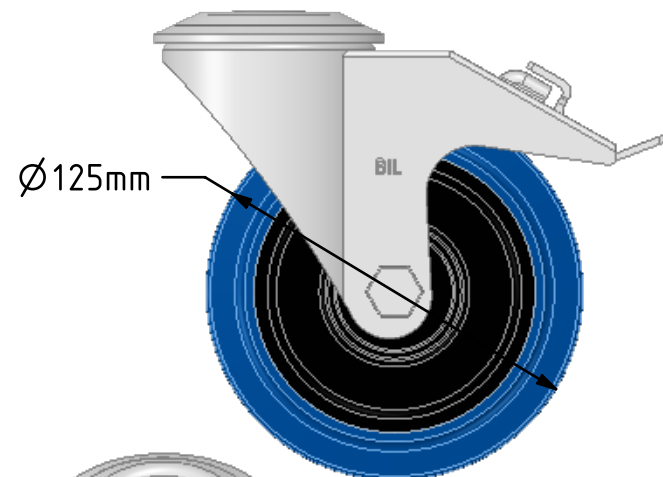
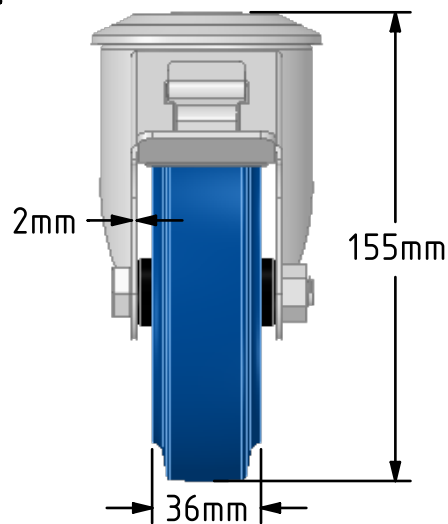
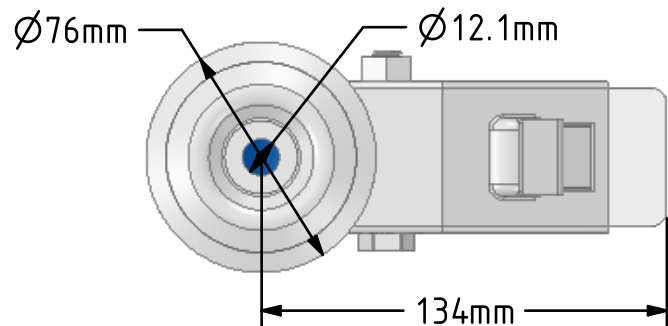
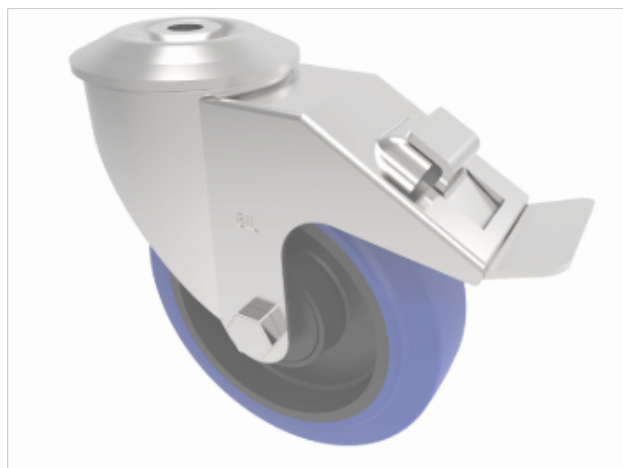


DRAWING DISCLAIMER
 COPYRIGHT OF THIS DRAWING IS RESERVED BY BIL GROUP LTD. IT IS ISSUED ON CONDITION THAT IT IS NOT REPRODUCED, COPIED, OR DISCLOSED TO A THIRD PARTY EITHER WHOLLY OR IN PART WITHOUT THE CONSENT IN WRITING OF BIL GROUP LTD.



Description:
 BZMM125SRNBJBH12SWB

Pressed steel swivel castor with a 12mm bolt hole fitted with 65 shore A blue elastic rubber tyre nylon centred wheel with a single ball bearing with retaining caps and swivel wheel brake. Wheel diameter 125mm, tread width 36mm, overall height 156mm, Load capacity 200kg. REACH compliant also PAH-Free rubber to confirm to EU-directive 2005/69/EC



	NAME	DATE
DRAWN	Matt	24/08/18
APPROVED BY	Chris	24/08/18
SCALE	2.5	24/08/18
WEIGHT	1.094kg	24/08/18

UNLESS OTHERWISE SPECIFIED DIMENSIONS ARE IN MILLIMETRES

Unspecified Tolerances
 Machining ± 0.25mm
 Fabrication ± 1mm



BIL Group Ltd, Porte Marsh Road, Calne
 Wiltshire, SN11 9BW, United Kingdom
 Tel +44 (0)1249 822 222 Fax: +44 (0)1249 822 300
 www.bilgroup.co.uk

TITLE

BZMM125SRNBJBH12SWB

SIZE	DWG NO.	REV
A4	BILCW03BZMM125SRNBJBH12SWB_01	1

FILE NAME BILCW03BZMM125SRNBJBH12SWB_01.PDF SHEET 1 OF 1