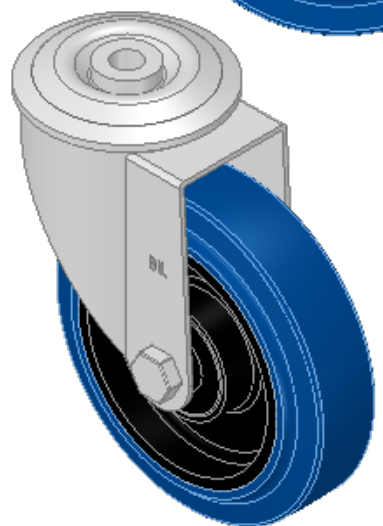
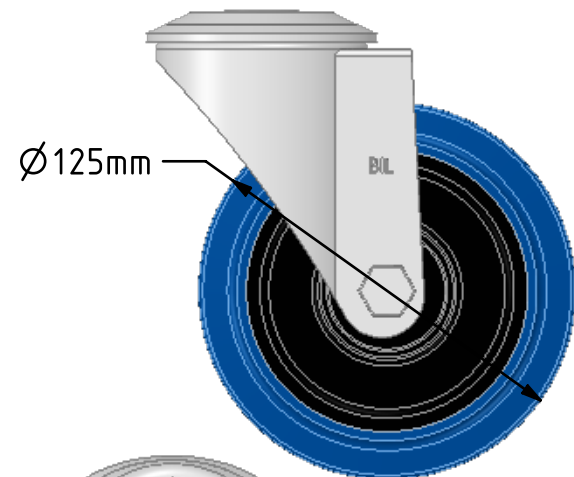
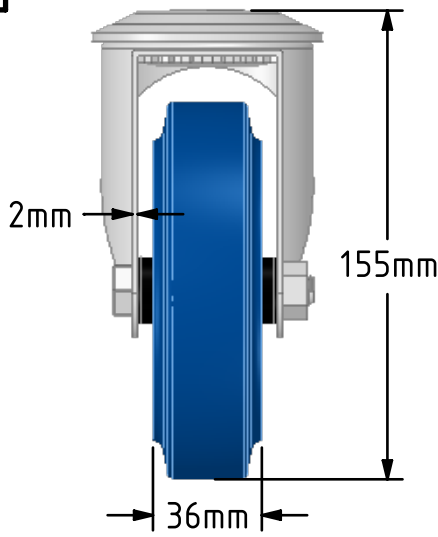
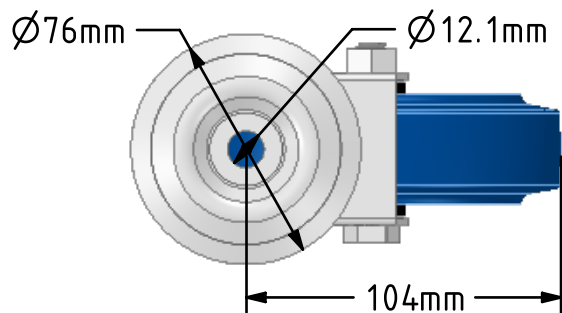
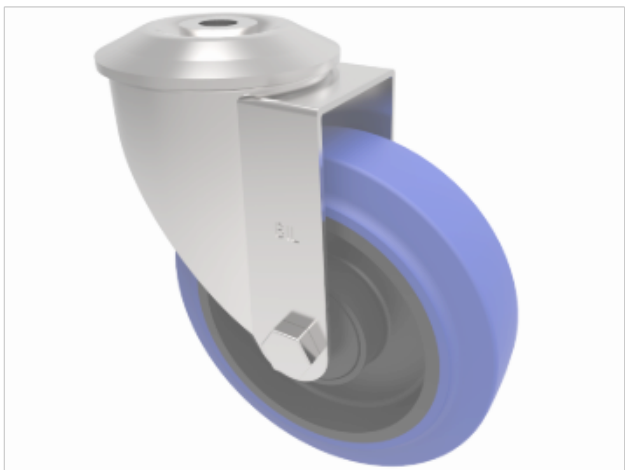


DRAWING DISCLAIMER
 COPYRIGHT OF THIS DRAWING IS RESERVED BY BIL GROUP LTD. IT IS ISSUED ON CONDITION THAT IT IS NOT REPRODUCED, COPIED, OR DISCLOSED TO A THIRD PARTY EITHER WHOLLY OR IN PART WITHOUT THE CONSENT IN WRITING OF BIL GROUP LTD.



Description:
 BZMM125SRNBJBH12
 Pressed steel swivel castor with a 12mm bolt hole fitted with 65 shore A blue elastic tyre on black nylon centred wheel with a single ball bearing and retaining caps. Wheel diameter 125mm, tread width 36mm, overall height 155mm, Load capacity 200kg. REACH compliant also PAH-Free rubber to confirm to EU-directive 2005/69/EC



	NAME	DATE
DRAWN	Matt	24/08/18
APPROVED BY	Chris	24/08/18
SCALE	2:5	24/08/18
WEIGHT	0.915kg	24/08/18
UNLESS OTHERWISE SPECIFIED DIMENSIONS ARE IN MILLIMETRES		
Unspecified Tolerances Machining ± 0.25mm Fabrication ± 1mm		

	BIL Group Ltd, Porte Marsh Road, Calne Wiltshire, SN11 9BW, United Kingdom Tel +44 (0)1249 822 222 Fax: +44 (0)1249 822 300 www.bilgroup.co.uk	
	TITLE BZMM125SRNBJBH12	
SIZE A4	DWG NO. BILCW03BZMM125SRNBJBH12_01	REV 1
FILE NAME BILCW03BZMM125SRNBJBH12_01.PDF SHEET 1 OF 1		