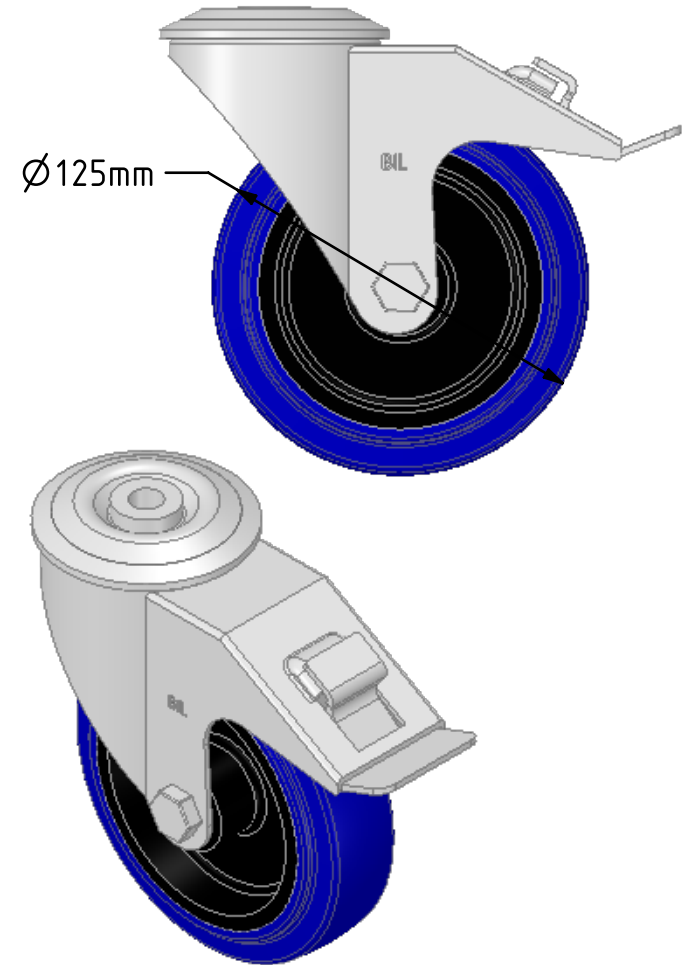
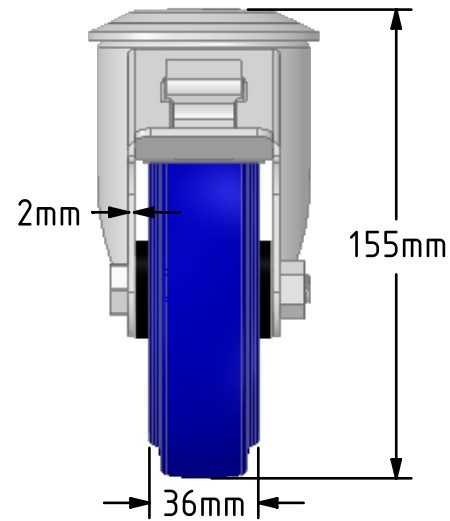
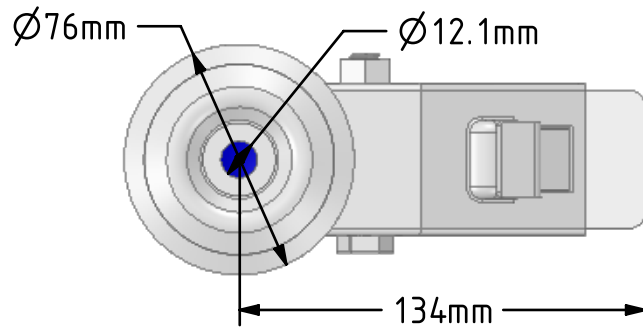


DRAWING DISCLAIMER

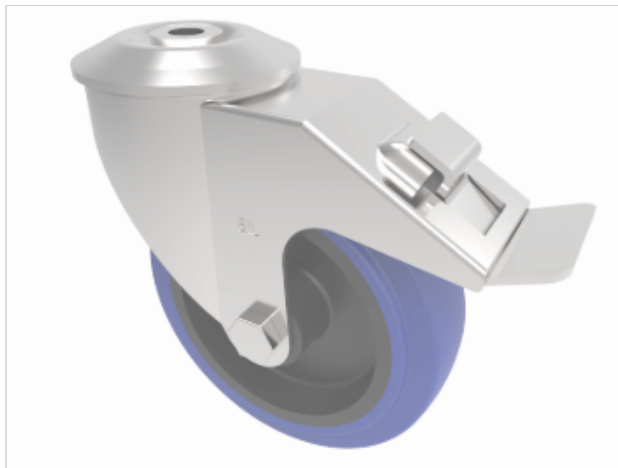
COPYRIGHT OF THIS DRAWING IS RESERVED BY BIL GROUP LTD. IT IS ISSUED ON CONDITION THAT IT IS NOT REPRODUCED, COPIED, OR DISCLOSED TO A THIRD PARTY EITHER WHOLLY OR IN PART WITHOUT THE CONSENT IN WRITING OF BIL GROUP LTD.



Description:

BZMM125RNBBH12SWB

Pressed steel swivel castor with 12mm bolt hole fixing fitted with a blue 65 shore A elastic rubber tyre on black nylon centred wheel with a roller bearing and total lock brake. Wheel diameter 125mm, tread width 36mm, overall height 155mm. Load capacity 200kg.



	NAME	DATE
DRAWN	Matt	22/08/18
APPROVED BY	Tim W	22/08/18
SCALE	2:5	22/08/18
WEIGHT	1.11kg	22/08/18

UNLESS OTHERWISE SPECIFIED DIMENSIONS ARE IN MILLIMETRES

Unspecified Tolerances
Machining $\pm 0.25\text{mm}$
Fabrication $\pm 1\text{mm}$



BIL Group Ltd, Porte Marsh Road, Calne
Wiltshire, SN11 9BW, United Kingdom
Tel +44 (0)1249 822 222 Fax: +44 (0)1249 822 300
www.bilgroup.co.uk

TITLE

BZMM125RNBBH12SWB

SIZE

DWG NO.

A4

BILCW03BZMM125RNBBH12SWB__02

REV

2

FILE NAME BILCW03BZMM125RNBBH12SWB__02.PDF SHEET 1 OF 1