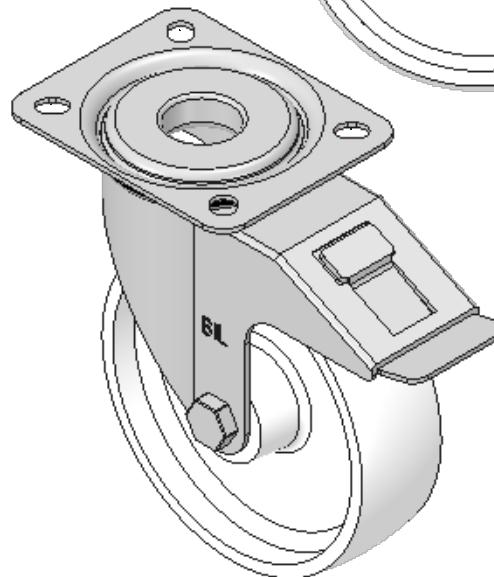
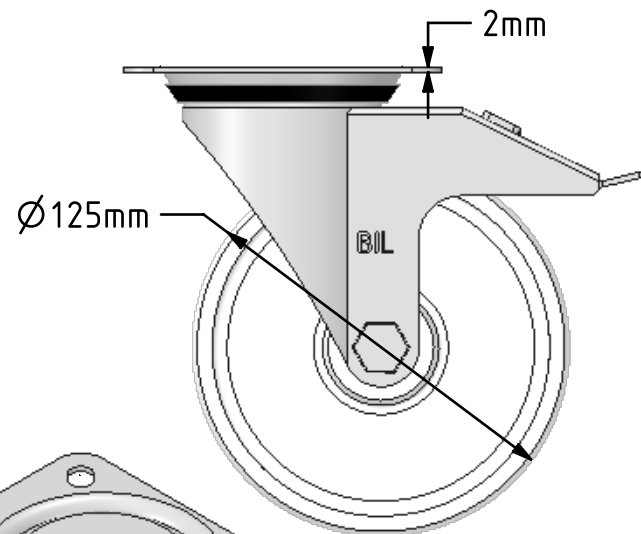
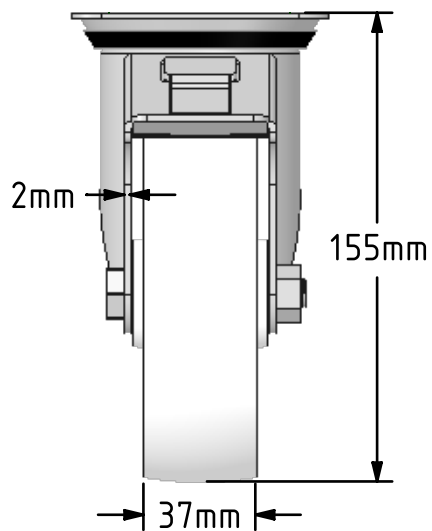
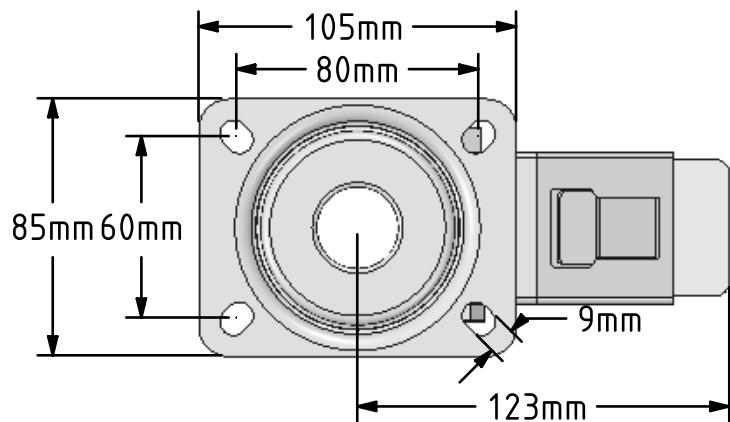


DRAWING DISCLAIMER
 COPYRIGHT OF THIS DRAWING IS RESERVED BY BIL GROUP LTD. IT IS ISSUED ON CONDITION THAT IT IS NOT REPRODUCED, COPIED, OR DISCLOSED TO A THIRD PARTY EITHER WHOLLY OR IN PART WITHOUT THE CONSENT IN WRITING OF BIL GROUP LTD.



Description:
 BZMM125PLSWB

Pressed steel swivel castor with a top plate fixing fitted with a white polypropylene wheel with a plain bearing and swivel wheel brake. Wheel diameter 125mm, tread width 37mm, overall height 155mm, top plate 105mm x 85mm, hole centres 80mm x 60mm. Load capacity 180kg.



	NAME	DATE
DRAWN	Matt	04/07/18
APPROVED BY	Chris	04/07/18
SCALE	2:5	04/07/18
WEIGHT	0.833kg	04/07/18

 BIL Group Ltd, Porte Marsh Road, Calne
 Wiltshire, SN11 9BW, United Kingdom
 Tel +44 (0)1249 822 222 Fax: +44 (0)1249 822 300
 www.bilgroup.co.uk

UNLESS OTHERWISE SPECIFIED DIMENSIONS ARE IN MILLIMETRES
 Unspecified Tolerances
 Machining ± 0.25mm
 Fabrication ± 1mm

TITLE		REV
BZMM125PLSWB		1
SIZE	DWG NO.	
A4	BILCW03BZMM125PLSWB_01	
FILE NAME	SHEET 1 OF 1	
BILCW03BZMM125PLSWB_01.PDF		