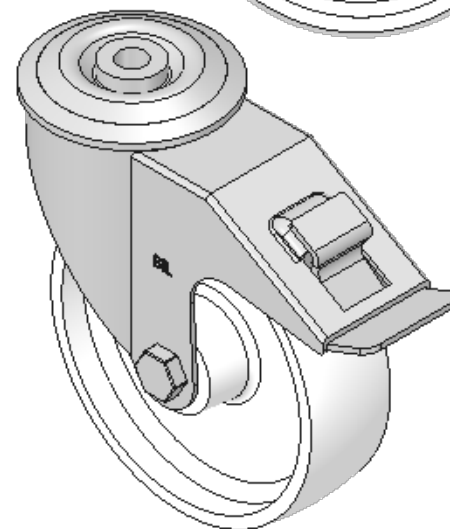
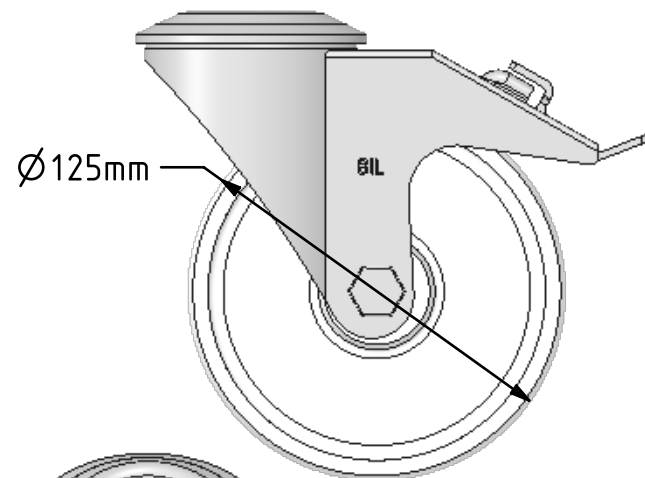
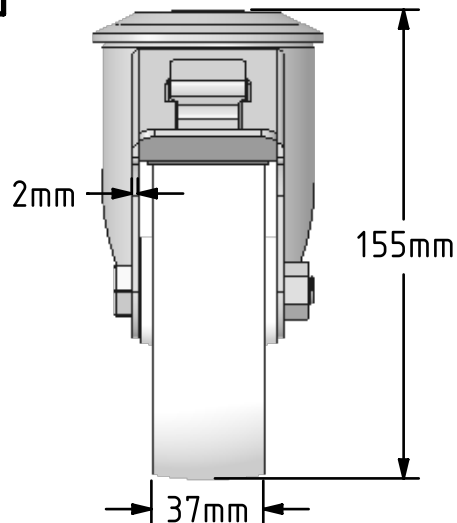
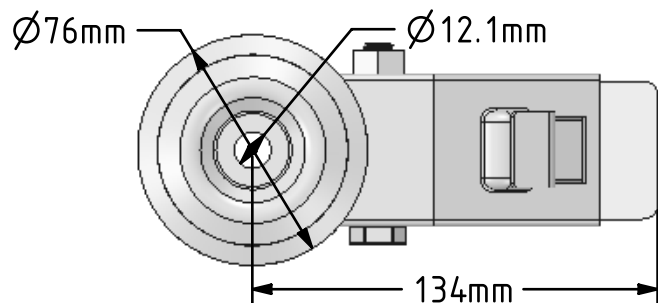



DRAWING DISCLAIMER
 COPYRIGHT OF THIS DRAWING IS RESERVED BY BIL GROUP LTD. IT IS ISSUED ON CONDITION THAT IT IS NOT REPRODUCED, COPIED, OR DISCLOSED TO A THIRD PARTY EITHER WHOLLY OR IN PART WITHOUT THE CONSENT IN WRITING OF BIL GROUP LTD.



Description:
 BZMM125PLBH12SWB

Pressed steel swivel castor with a 12mm bolt hole fixing fitted with a white polypropylene wheel with a plain bearing and swivel wheel brake. Wheel diameter 125mm, tread width 37mm, overall height 155mm. Load capacity 180kg.



	NAME	DATE	BIL Group Ltd, Porte Marsh Road, Calne Wiltshire, SN11 9BW, United Kingdom Tel +44 (0)1249 822 222 Fax: +44 (0)1249 822 300 www.bilgroup.co.uk	
DRAWN	Matt	04/07/18	 TITLE BZMM125PLBH12SWB	
APPROVED BY	Chris	04/07/18		
SCALE	2:5	04/07/18		
WEIGHT	0.896kg	04/07/18		
UNLESS OTHERWISE SPECIFIED DIMENSIONS ARE IN MILLIMETRES			SIZE	DWG NO.
Unspecified Tolerances Machining ± 0.25mm Fabrication ± 1mm			A4	BILCW03BZMM125PLBH12SWB_01
			REV	1
			FILE NAME BILCW03BZMM125PLBH12SWB_01.PDF SHEET 1 OF 1	