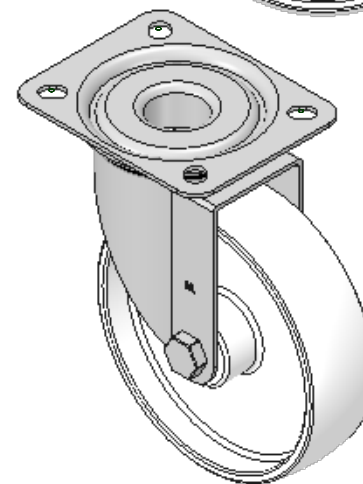
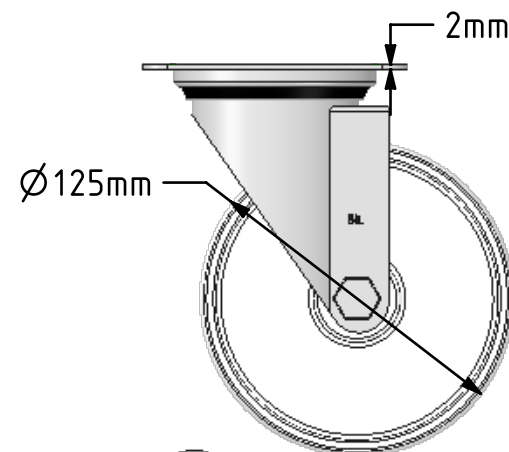
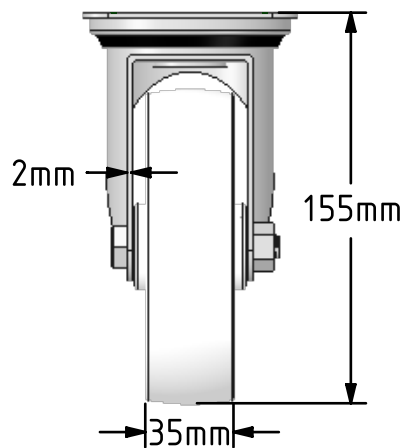
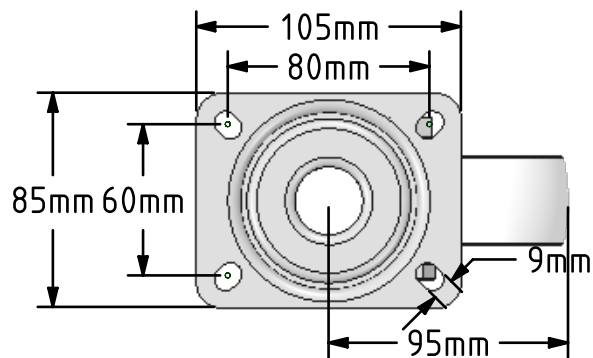
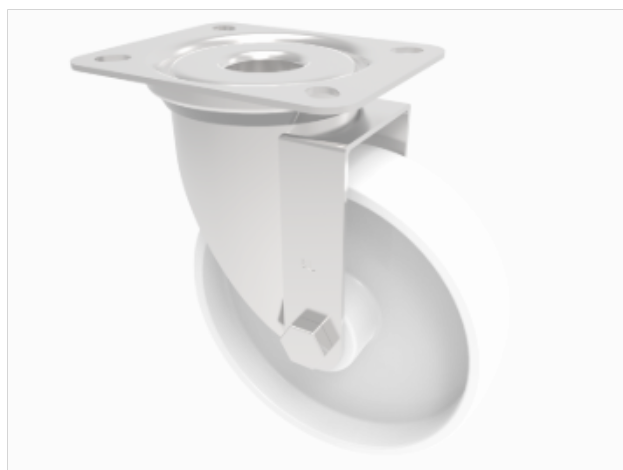


DRAWING DISCLAIMER
 COPYRIGHT OF THIS DRAWING IS RESERVED BY BIL GROUP LTD. IT IS ISSUED ON CONDITION THAT IT IS NOT REPRODUCED, COPIED, OR DISCLOSED TO A THIRD PARTY EITHER WHOLLY OR IN PART WITHOUT THE CONSENT IN WRITING OF BIL GROUP LTD.



Description:
 BZMM125NYB

Pressed steel swivel castor with a top plate fixing fitted with a white nylon wheel with roller bearing. Wheel diameter 125mm, tread width 35mm, overall height 155mm plate size 105mm x 85mm, hole centres 80mm x 60mm. Load capacity 200kg.



	NAME	DATE
DRAWN	Matt	29/06/18
APPROVED BY	Chris	29/06/18
SCALE	1:3	29/06/18
WEIGHT	0.687kg	29/06/18

 BIL Group Ltd, Porte Marsh Road, Calne
 Wiltshire, SN11 9BW, United Kingdom
 Tel +44 (0)1249 822 222 Fax: +44 (0)1249 822 300
 www.bilgroup.co.uk

TITLE	
BZMM125NYB	

UNLESS OTHERWISE SPECIFIED DIMENSIONS ARE IN MILLIMETRES
 Unspecified Tolerances
 Machining ± 0.25mm
 Fabrication ± 1mm

SIZE	DWG NO.	REV
A4	BILCW03BZMM125NYB_01	1
FILE NAME	SHEET 1 OF 1	
BILCW03BZMM125NYB_01.PDF		