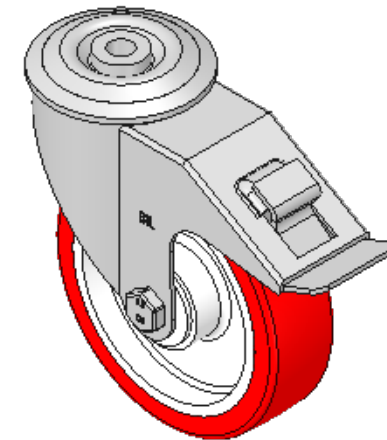
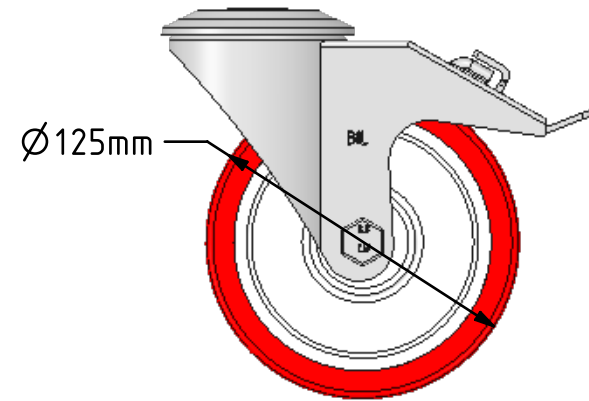
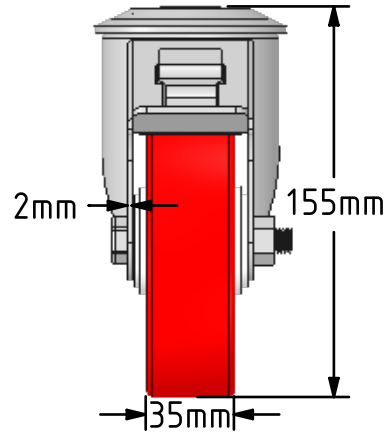
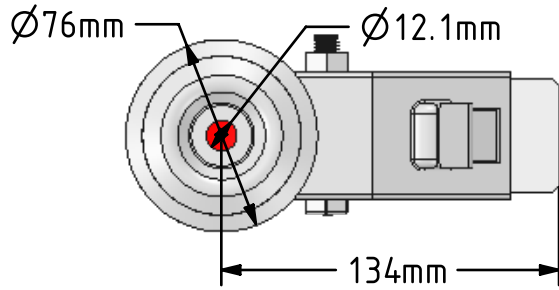



DRAWING DISCLAIMER
 COPYRIGHT OF THIS DRAWING IS RESERVED BY BIL GROUP LTD. IT IS ISSUED ON CONDITION THAT IT IS NOT REPRODUCED, COPIED, OR DISCLOSED TO A THIRD PARTY EITHER WHOLLY OR IN PART WITHOUT THE CONSENT IN WRITING OF BIL GROUP LTD.



Description:
 BZMM125NPBBH12SW

Pressed steel swivel castor with a 12mm bolt hole fitted with a red polyurethane on white nylon centred wheel with roller bearings and total lock brake, 125mm wheel diameter, 35mm tread width, 155mm overall height with a load capacity of 200kgs.



	NAME	DATE	 BIL Group Ltd, Porte Marsh Road, Calne Wiltshire, SN11 9BW, United Kingdom Tel +44 (0)1249 822 222 Fax: +44 (0)1249 822 300 www.bilgroup.co.uk		
DRAWN	Matt	30/05/18			
APPROVED BY	Chris	30/05/18	TITLE BZMM125NPBBH12SW		
SCALE	1:3	30/05/18			
WEIGHT	1.092kg	30/05/18			
UNLESS OTHERWISE SPECIFIED DIMENSIONS ARE IN MILLIMETRES Unspecified Tolerances Machining ± 0.25mm Fabrication ± 1mm			SIZE A4	DWG NO. BILCW03BZMM125NPBBH12SW_01	REV 1
FILE NAME BILCW03BZMM125NPBBH12SW_01.PDF SHEET 1 OF 1					