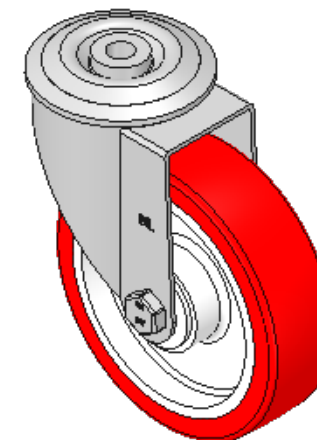
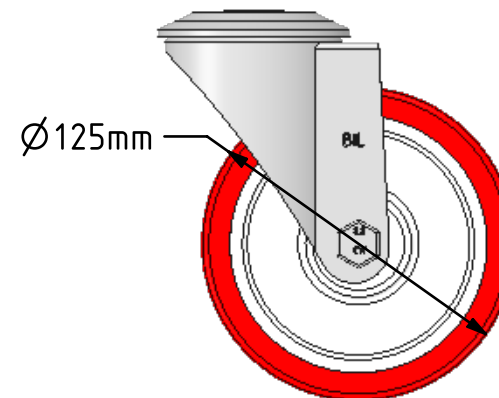
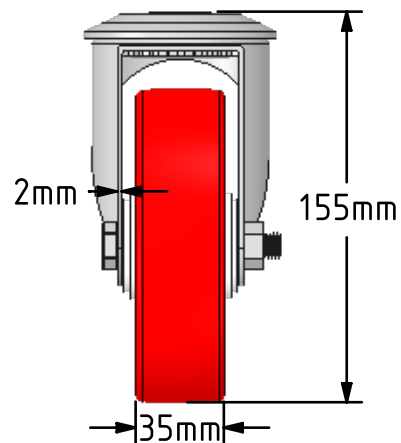
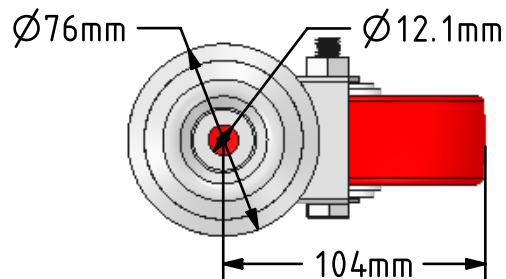


DRAWING DISCLAIMER
 COPYRIGHT OF THIS DRAWING IS RESERVED BY BIL GROUP LTD. IT IS ISSUED ON CONDITION THAT IT IS NOT REPRODUCED, COPIED, OR DISCLOSED TO A THIRD PARTY EITHER WHOLLY OR IN PART WITHOUT THE CONSENT IN WRITING OF BIL GROUP LTD.



Description:
 BZMM125NPBBH12

Pressed steel swivel castor with a 12mm bolt hole fitted with a red polyurethane on white nylon centred wheel with roller bearings, 125mm wheel diameter, 35mm tread width, 155mm overall height with a load capacity of 200kgs.



	NAME	DATE
DRAWN	Matt	30/05/18
APPROVED BY	Chris	30/05/18
SCALE	1:3	30/05/18
WEIGHT	0.913kg	30/05/18

UNLESS OTHERWISE SPECIFIED DIMENSIONS ARE IN MILLIMETRES

Unspecified Tolerances
 Machining ± 0.25mm
 Fabrication ± 1mm



BIL Group Ltd, Porte Marsh Road, Calne
 Wiltshire, SN11 9BW, United Kingdom
 Tel +44 (0)1249 822 222 Fax: +44 (0)1249 822 300
 www.bilgroup.co.uk

TITLE

BZMM125NPBBH12

SIZE DWG NO.
 A4 BILCW03BZMM125NPBBH12__01

REV
 1

FILE NAME BILCW03BZMM125NPBBH12__01.PDF SHEET 1 OF 1