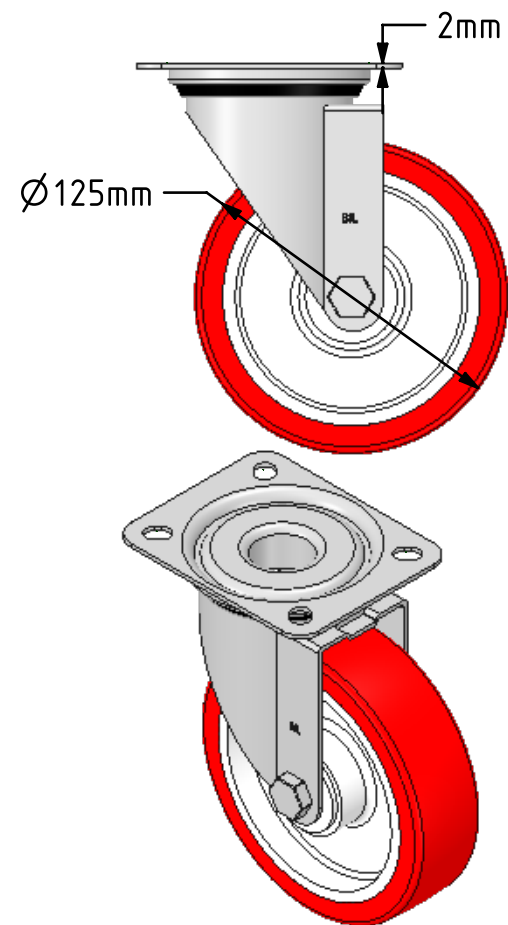
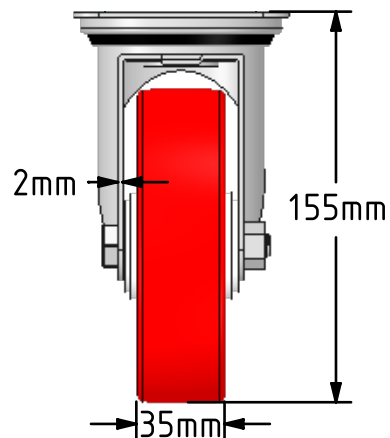
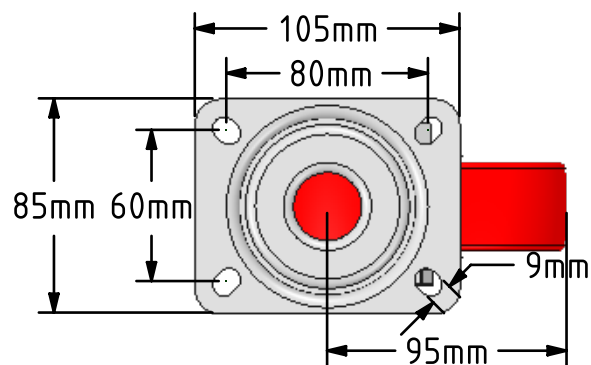
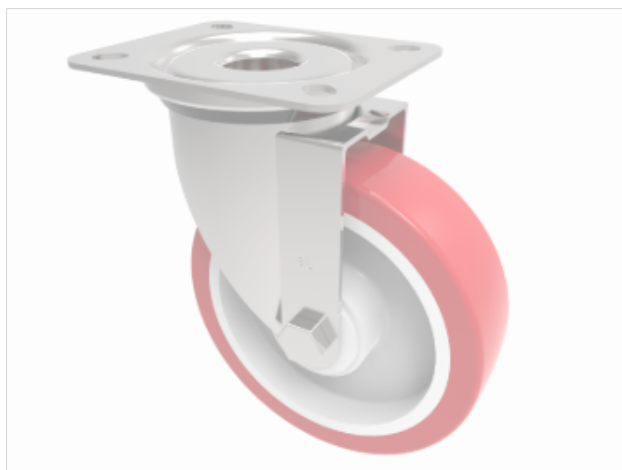



DRAWING DISCLAIMER

COPYRIGHT OF THIS DRAWING IS RESERVED BY BIL GROUP LTD. IT IS ISSUED ON CONDITION THAT IT IS NOT REPRODUCED, COPIED, OR DISCLOSED TO A THIRD PARTY EITHER WHOLLY OR IN PART WITHOUT THE CONSENT IN WRITING OF BIL GROUP LTD.

**Description:**
BZMM125NPB

Pressed steel swivel castor with a top plate fitted with a red polyurethane on white nylon centred wheel with roller bearings, 125mm wheel diameter, 35mm tread width, 155mm overall height, 105 x 85 top plate, 80 x 60mm bolt holes, with a load capacity of 200kgs.



	NAME	DATE	 BIL Group Ltd, Porte Marsh Road, Calne Wiltshire, SN11 9BW, United Kingdom Tel +44 (0)1249 822 222 Fax: +44 (0)1249 822 300 www.bilgroup.co.uk		
DRAWN	Matt	01/08/18			
APPROVED BY	Tim W	01/08/18			
SCALE	1:3	01/08/18			
WEIGHT	0.828kg	01/08/18			
UNLESS OTHERWISE SPECIFIED DIMENSIONS ARE IN MILLIMETRES			TITLE		
Unspecified Tolerances Machining $\pm 0.25\text{mm}$ Fabrication $\pm 1\text{mm}$			BZMM125NPB		
			SIZE A4	DWG NO. BILCW03BZMM125NPB__01	REV 1
			FILE NAME BILCW03BZMM125NPB__01.PDF SHEET 1 OF 1		