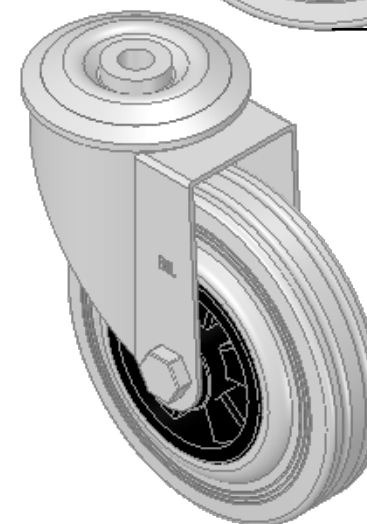
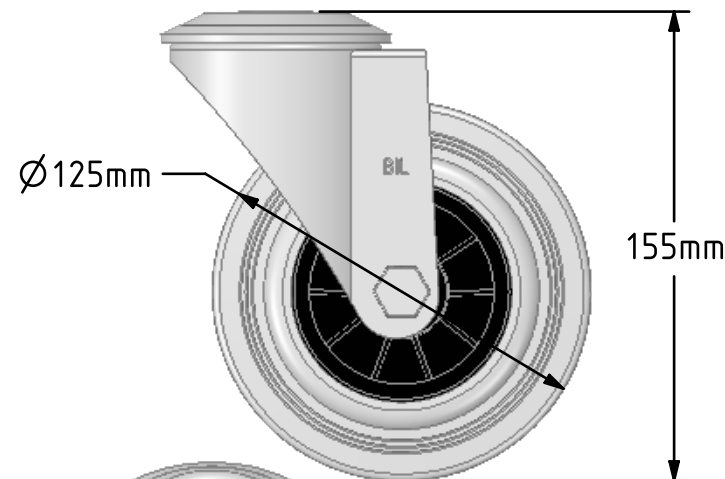
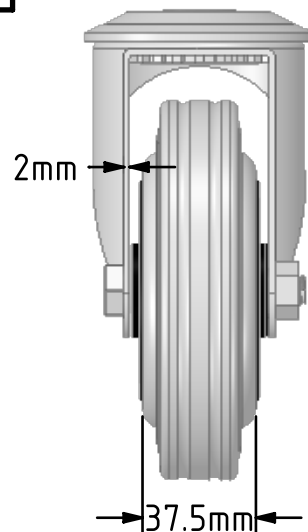
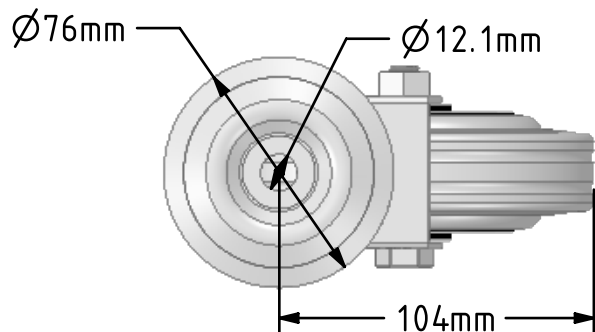


DRAWING DISCLAIMER
 COPYRIGHT OF THIS DRAWING IS RESERVED BY BIL GROUP LTD. IT IS ISSUED ON CONDITION THAT IT IS NOT REPRODUCED, COPIED, OR DISCLOSED TO A THIRD PARTY EITHER WHOLLY OR IN PART WITHOUT THE CONSENT IN WRITING OF BIL GROUP LTD.



Description:
 BZMM125GRBBH12

Pressed steel swivel castor with a 12mm bolt hole fixing fitted with a grey rubber tyre on black polypropylene centred wheel with a roller bearing. Wheel diameter 125mm, tread width 37.5mm, overall height 155mm. Load capacity 90kg.



	NAME	DATE
DRAWN	Matt	21/08/18
APPROVED BY	Tim W	21/08/18
SCALE	2:5	21/08/18
WEIGHT	1.046kg	21/08/18

 BIL Group Ltd, Porte Marsh Road, Calne
 Wiltshire, SN11 9BW, United Kingdom
 Tel +44 (0)1249 822 222 Fax: +44 (0)1249 822 300
 www.bilgroup.co.uk

TITLE		
BZMM125GRBBH12		
SIZE	DWG NO.	REV
A4	BILCW03BZMM125GRBBH12_01	1
FILE NAME		SHEET
BILCW03BZMM125GRBBH12_01.PDF		1 OF 1

UNLESS OTHERWISE SPECIFIED DIMENSIONS ARE IN MILLIMETRES

Unspecified Tolerances
 Machining ± 0.25mm
 Fabrication ± 1mm