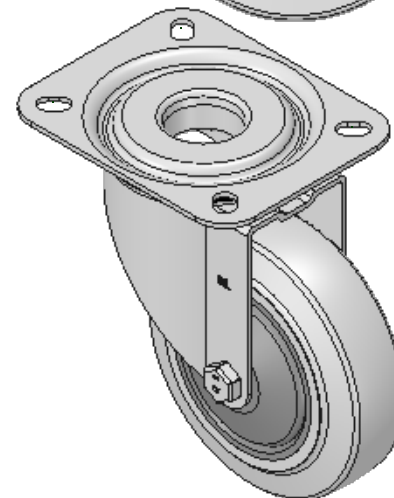
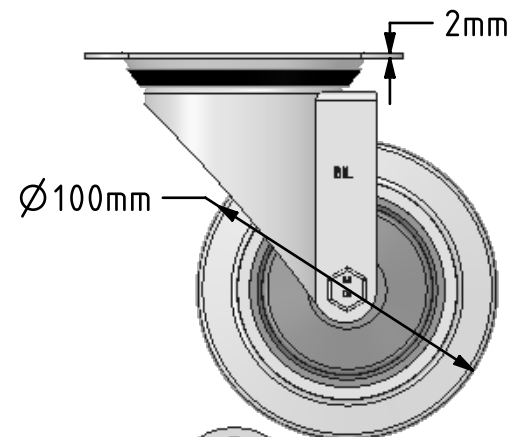
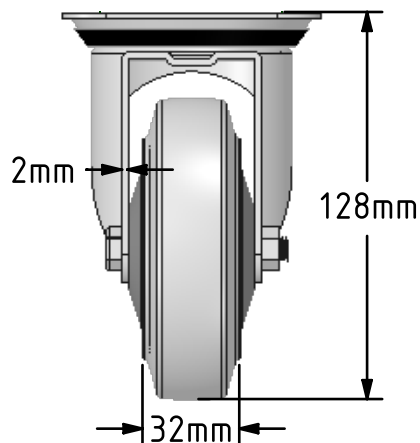
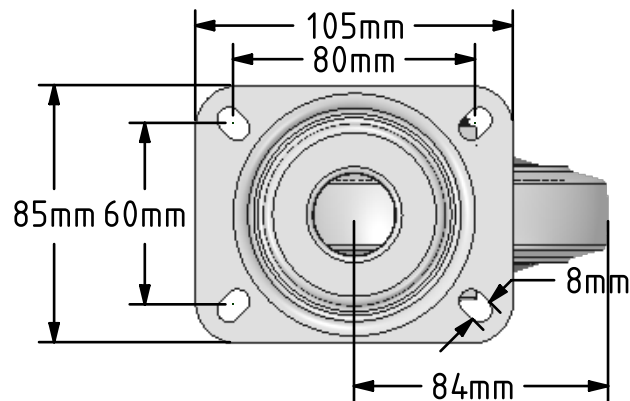



DRAWING DISCLAIMER  
 COPYRIGHT OF THIS DRAWING IS RESERVED BY BIL GROUP LTD. IT IS ISSUED ON CONDITION THAT IT IS NOT REPRODUCED, COPIED, OR DISCLOSED TO A THIRD PARTY EITHER WHOLLY OR IN PART WITHOUT THE CONSENT IN WRITING OF BIL GROUP LTD.



Description:  
 BZMM100STPRBJ

Pressed steel swivel castor with top plate fixing fitted with a 65 shore A grey thermoplastic rubber tyre on grey polypropylene centre wheel with single ball bearing with retaining caps. Wheel diameter 100mm, tread width 32mm, overall height 128mm, top plate 105mm x 85mm, hole centres 80mm x 60mm. Load capacity 100kg. REACH compliant also PAH-Free rubber to confirm to EU-directive 2005/69/EC



	NAME	DATE	BIL Group Ltd, Porte Marsh Road, Calne Wiltshire, SN11 9BW, United Kingdom Tel +44 (0)1249 822 222 Fax: +44 (0)1249 822 300 www.bilgroup.co.uk	
DRAWN	Matt	28/02/18	 TITLE <b>BZMM100STPRBJ</b>	
APPROVED BY	Tim W	28/02/18		
SCALE	2:5	28/02/18		
WEIGHT	0.64kg	28/02/18		
UNLESS OTHERWISE SPECIFIED DIMENSIONS ARE IN MILLIMETRES			SIZE	DWG NO.
Unspecified Tolerances Machining ± 0.25mm Fabrication ± 1mm			A4	BILCW03BZMM100STPRBJ_02
			REV	2
			FILE NAME	BILCW03BZMM100STPRBJ_02.PDF SHEET 1 OF 1