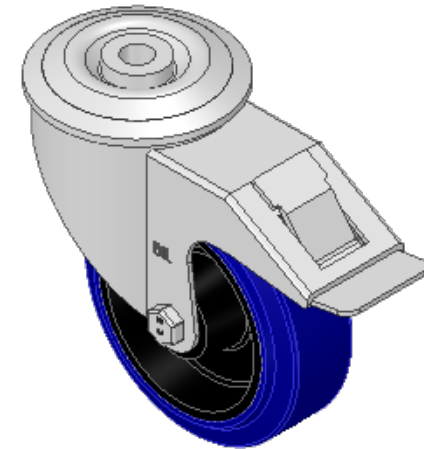
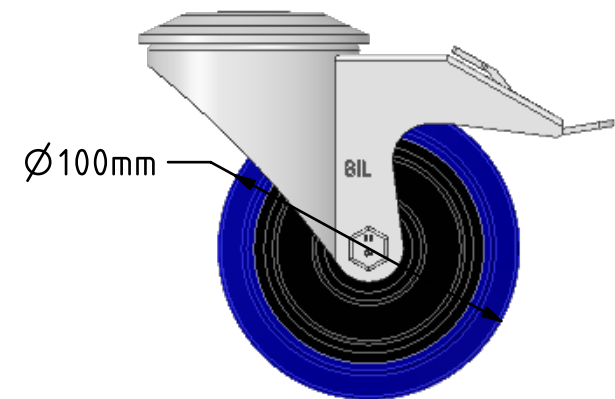
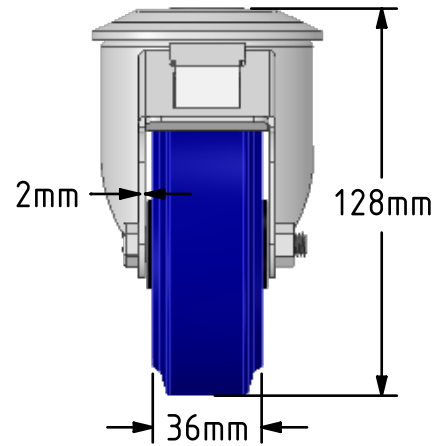
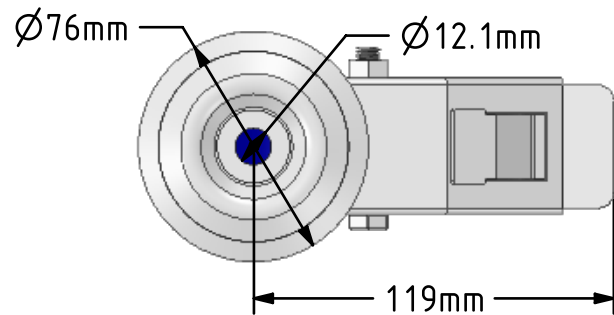


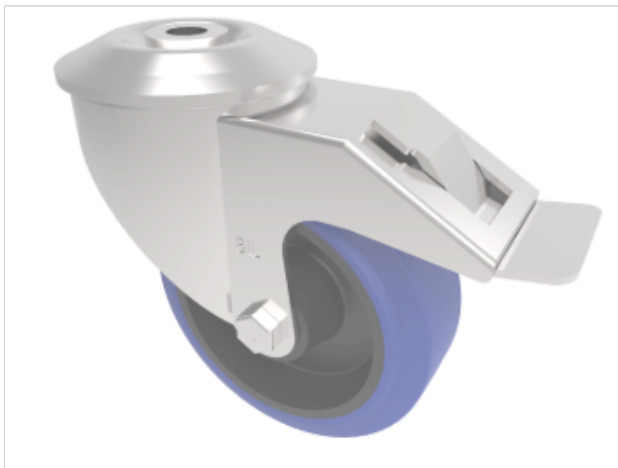
**DRAWING DISCLAIMER**

COPYRIGHT OF THIS DRAWING IS RESERVED BY BIL GROUP LTD. IT IS ISSUED ON CONDITION THAT IT IS NOT REPRODUCED, COPIED, OR DISCLOSED TO A THIRD PARTY EITHER WHOLLY OR IN PART WITHOUT THE CONSENT IN WRITING OF BIL GROUP LTD.

**Description:**

BZMM100SRNBBH12SWB

Pressed steel swivel castor with 12mm bolt hole fixing fitted with a blue 65 shore A elastic rubber tyre on black nylon centred wheel with a roller bearing and a total lock brake. Wheel diameter 100mm, tread width 36mm, overall height 128mm. Load capacity 180kg. REACH compliant also PAH-Free rubber to confirm to EU-directive 2005/69/EC



|             | NAME    | DATE     |
|-------------|---------|----------|
| DRAWN       | Matt    | 19/03/19 |
| APPROVED BY | Chris   | 19/03/19 |
| SCALE       | 2:5     | 19/03/19 |
| WEIGHT      | 0.873kg | 19/03/19 |

UNLESS OTHERWISE SPECIFIED DIMENSIONS ARE IN MILLIMETRES

Unspecified Tolerances  
Machining  $\pm 0.25\text{mm}$   
Fabrication  $\pm 1\text{mm}$



BIL Group Ltd, Porte Marsh Road, Calne  
Wiltshire, SN11 9BW, United Kingdom  
Tel +44 (0)1249 822 222 Fax: +44 (0)1249 822 300  
www.bilgroup.co.uk

TITLE

BZMM100SRNBBH12SWB

SIZE

DWG NO.

A4

BILCW03BZMM100SRNBBH12SWB\_03

REV  
3

FILE NAME BILCW03BZMM100SRNBBH12SWB\_03.PDF SHEET 1 OF 1