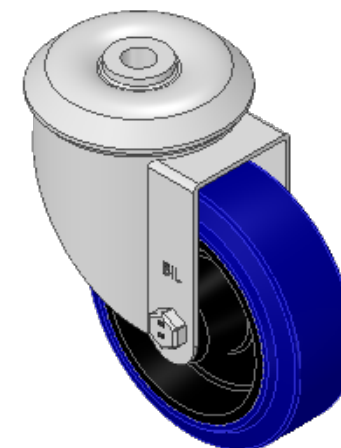
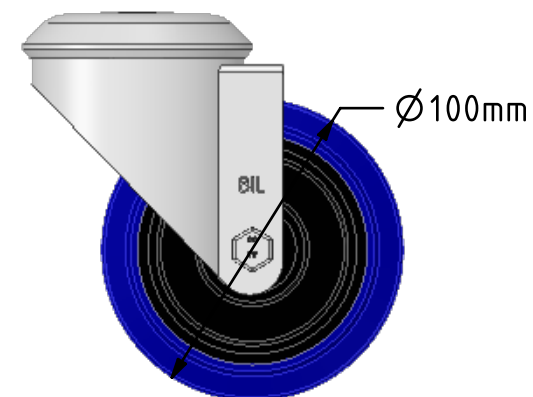
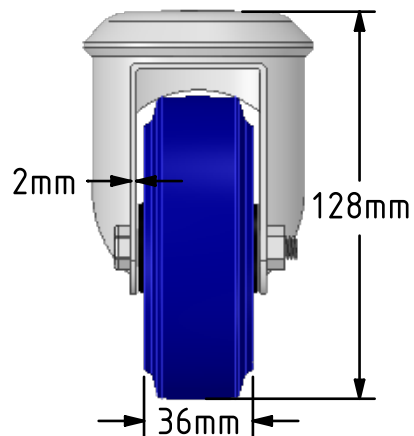
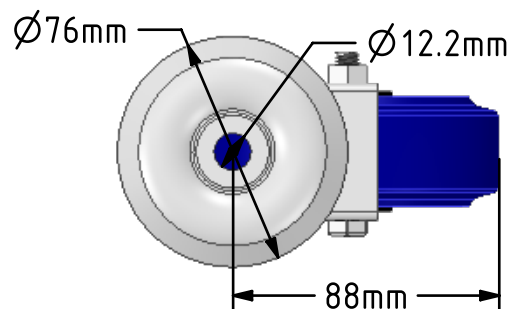


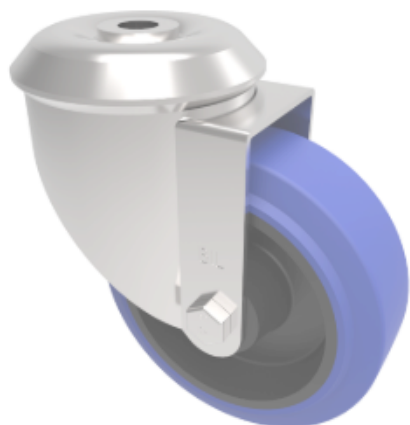
DRAWING DISCLAIMER


COPYRIGHT OF THIS DRAWING IS RESERVED BY BIL GROUP LTD. IT IS ISSUED ON CONDITION THAT IT IS NOT REPRODUCED, COPIED, OR DISCLOSED TO A THIRD PARTY EITHER WHOLLY OR IN PART WITHOUT THE CONSENT IN WRITING OF BIL GROUP LTD.

**Description:**

BZMM100SRNBBH12

Pressed steel swivel castor with 12mm bolt hole fixing fitted with a blue 65 shore A elastic rubber tyre on black nylon centred wheel with a roller bearing. Wheel diameter 100mm, tread width 36mm, overall height 128mm. Load capacity 180kg. REACH compliant also PAH-Free rubber to confirm to EU-directive 2005/69/EC



| | NAME | DATE |  BIL Group Ltd, Porte Marsh Road, Calne Wiltshire, SN11 9BW, United Kingdom Tel +44 (0)1249 822 222 Fax: +44 (0)1249 822 300 www.bilgroup.co.uk | |
|---|---------|----------|--|--------------------------------------|
| DRAWN | Matt | 19/03/19 | | |
| APPROVED BY | Chris | 19/03/19 | | |
| SCALE | 2.5 | 19/03/19 | | |
| WEIGHT | 0.708kg | 19/03/19 | | |
| UNLESS OTHERWISE SPECIFIED DIMENSIONS ARE IN MILLIMETRES | | | TITLE | |
| Unspecified Tolerances Machining $\pm 0.25\text{mm}$ Fabrication $\pm 1\text{mm}$ | | | BZMM100SRNBBH12 | |
| | | | SIZE A4 | DWG NO. BILCW03BZMM100SRNBBH12_02 |
| | | | FILE NAME BILCW03BZMM100SRNBBH12_02.PDF | REV 2 |
| | | | SHEET 1 OF 1 | |