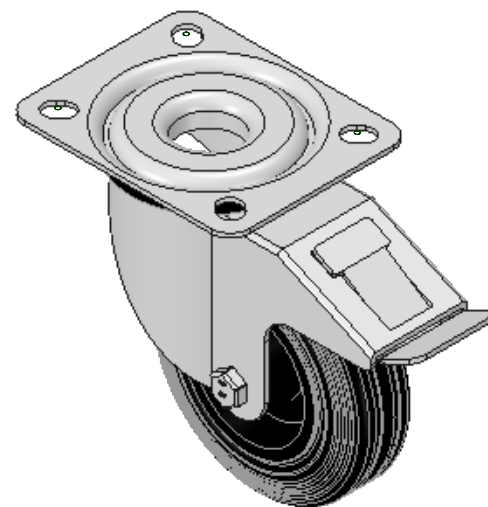
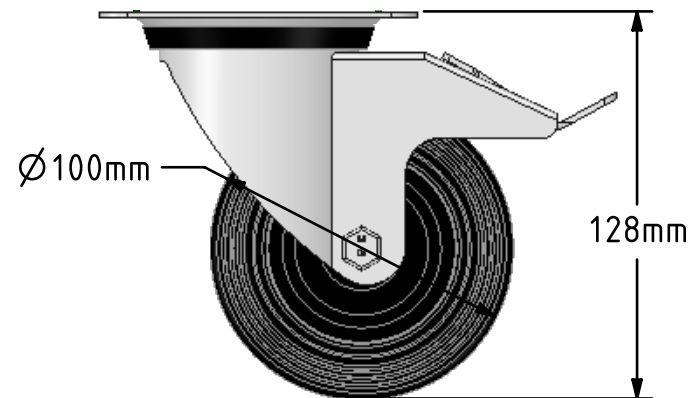
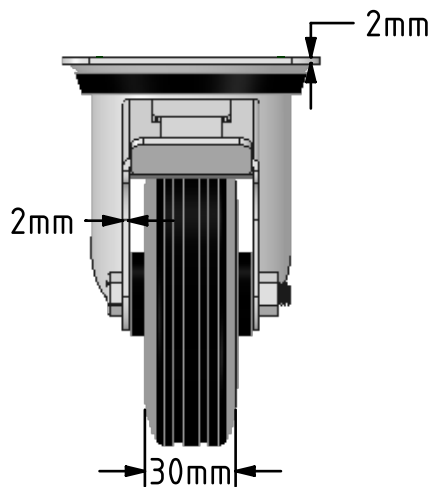
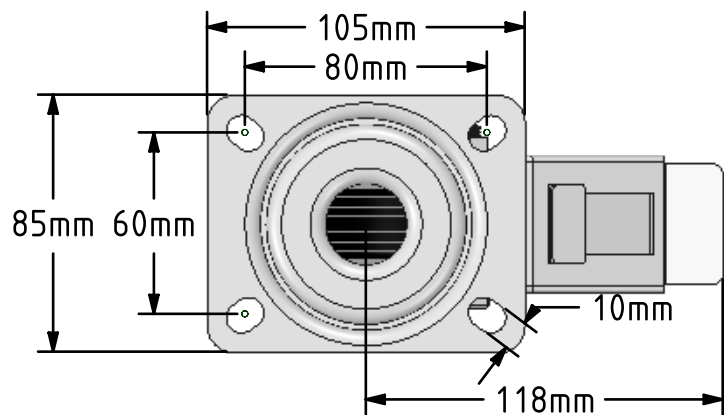


DRAWING DISCLAIMER
 COPYRIGHT OF THIS DRAWING IS RESERVED BY BIL GROUP LTD. IT IS ISSUED ON CONDITION THAT IT IS NOT REPRODUCED, COPIED, OR DISCLOSED TO A THIRD PARTY EITHER WHOLLY OR IN PART WITHOUT THE CONSENT IN WRITING OF BIL GROUP LTD.



Description:
 BZMM100PSBSWB

Pressed steel swivel castor with top plate fixing fitted with a black rubber tyre with a black polypropylene centred wheel with a roller bearing and swivel wheel brake. Wheel diameter 100mm, tread width 30mm, overall height 128mm, top plate 105mm x 85mm, hole centres 80mm x 60mm. Load capacity 70kg.



	NAME	DATE
DRAWN	Matt	02/07/18
APPROVED BY	Chris	02/07/18
SCALE	2:5	02/07/18
WEIGHT	0.84kg	02/07/18

UNLESS OTHERWISE SPECIFIED DIMENSIONS ARE IN MILLIMETRES

Unspecified Tolerances
 Machining ± 0.25mm
 Fabrication ± 1mm



BIL Group Ltd, Porte Marsh Road, Calne
 Wiltshire, SN11 9BW, United Kingdom
 Tel +44 (0)1249 822 222 Fax: +44 (0)1249 822 300
 www.bilgroup.co.uk

TITLE

BZMM100PSBSWB

SIZE DWG NO.

A4

BILCW03BZMM100PSBSWB_02

REV

2

FILE NAME BILCW03BZMM100PSBSWB_02.PDF

SHEET 1 OF 1