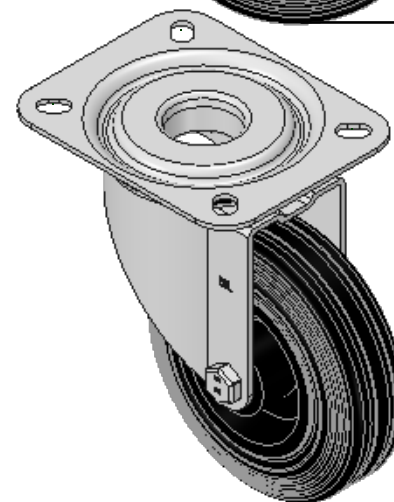
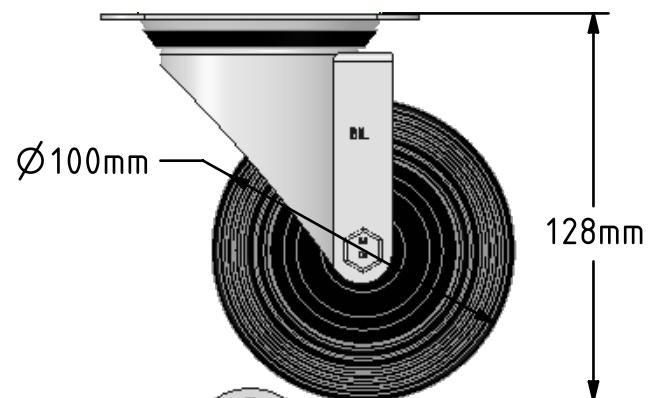
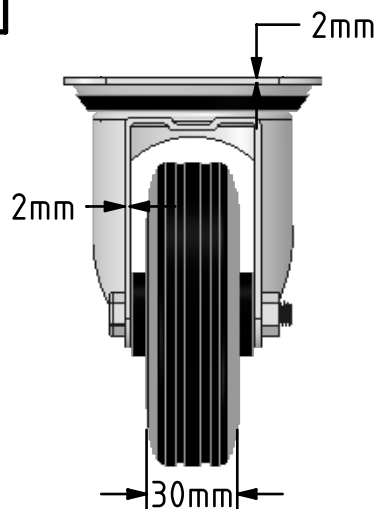
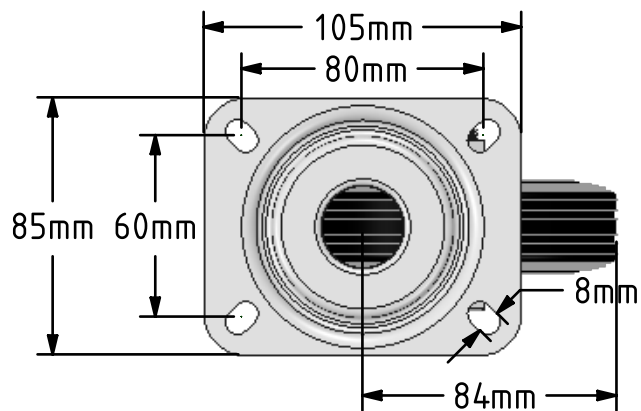


DRAWING DISCLAIMER
 COPYRIGHT OF THIS DRAWING IS RESERVED BY BIL GROUP LTD. IT IS ISSUED ON CONDITION THAT IT IS NOT REPRODUCED, COPIED, OR DISCLOSED TO A THIRD PARTY EITHER WHOLLY OR IN PART WITHOUT THE CONSENT IN WRITING OF BIL GROUP LTD.



Description:
 BZMM100PSB

Pressed steel swivel castor with top plate fixing fitted with a black rubber tyre black polypropylene centred wheel with a roller bearing. Wheel diameter 100mm, tread width 30mm, overall height 128mm, top plate 105mm x 85mm, hole centres 80mm x 60mm. Load capacity 70kg.



	NAME	DATE
DRAWN	Matt	02/07/18
APPROVED BY	Chris	02/07/18
SCALE	2:5	02/07/18
WEIGHT	0.7kg	02/07/18

BIL BIL Group Ltd, Porte Marsh Road, Calne
 Wiltshire, SN11 9BW, United Kingdom
 Tel +44 (0)1249 822 222 Fax: +44 (0)1249 822 300
 www.bilgroup.co.uk

TITLE	BZMM100PSB	
-------	------------	--

UNLESS OTHERWISE SPECIFIED DIMENSIONS ARE IN MILLIMETRES Unspecified Tolerances Machining ± 0.25mm Fabrication ± 1mm	SIZE	DWG NO.	REV
	A4	BILCW03BZMM100PSB_01	1
FILE NAME		BILCW03BZMM100PSB_01.PDF	SHEET 1 OF 1