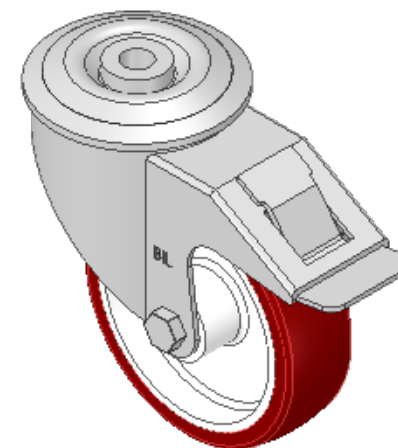
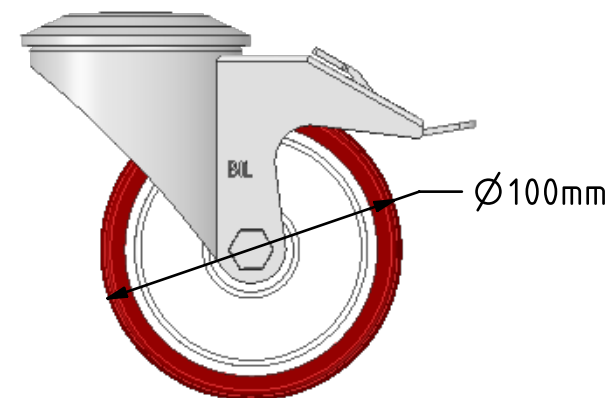
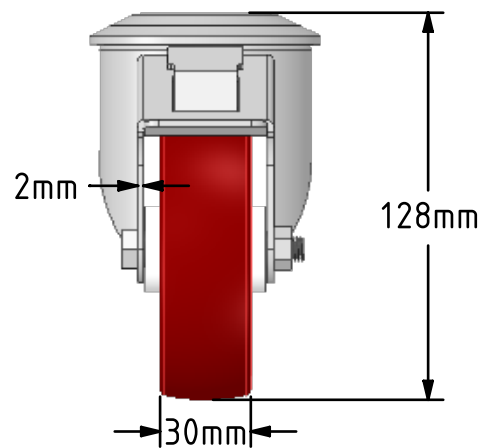
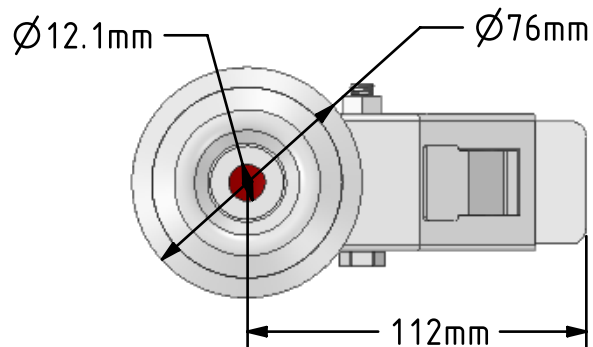


DRAWING DISCLAIMER
 COPYRIGHT OF THIS DRAWING IS RESERVED BY BIL GROUP LTD. IT IS ISSUED ON CONDITION THAT IT IS NOT REPRODUCED, COPIED, OR DISCLOSED TO A THIRD PARTY EITHER WHOLLY OR IN PART WITHOUT THE CONSENT IN WRITING OF BIL GROUP LTD.



Description:
 BZMM100PNBBH12SW

Pressed steel swivel castor with a 12mm bolt hole fixing fitted with a brown polyurethane white nylon centred wheel with roller bearing and total lock brake. Wheel diameter 100mm, tread width 30mm, overall height 128mm, load capacity 170kg.



	NAME	DATE
DRAWN	Matt	19/03/19
APPROVED BY	Kevin	19/03/19
SCALE	2:5	19/03/19
WEIGHT	0.806kg	19/03/19

UNLESS OTHERWISE SPECIFIED DIMENSIONS ARE IN MILLIMETRES

Unspecified Tolerances
 Machining ± 0.25mm
 Fabrication ± 1mm



BIL Group Ltd, Porte Marsh Road, Calne
 Wiltshire, SN11 9BW, United Kingdom
 Tel +44 (0)1249 822 222 Fax: +44 (0)1249 822 300
 www.bilgroup.co.uk

TITLE

BZMM100PNBBH12SW

SIZE	DWG NO.	REV
A4	BILCW03BZMM100PNBBH12SW__02	2

FILE NAME BILCW03BZMM100PNBBH12SW__02.PDF SHEET 1 OF 1