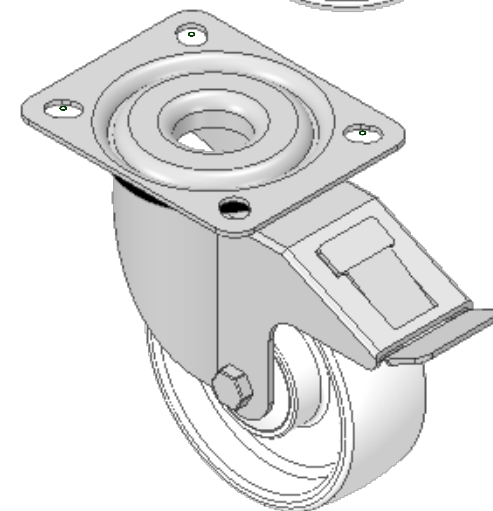
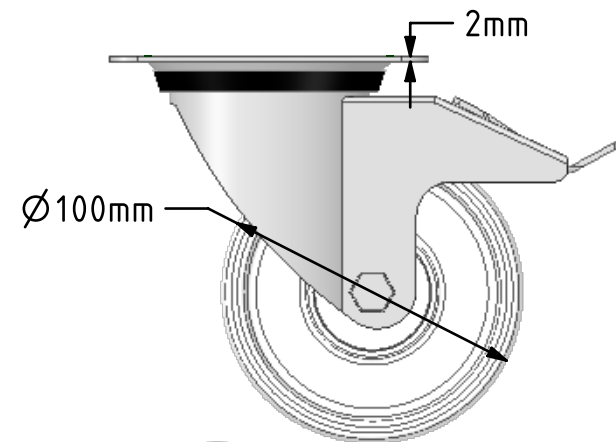
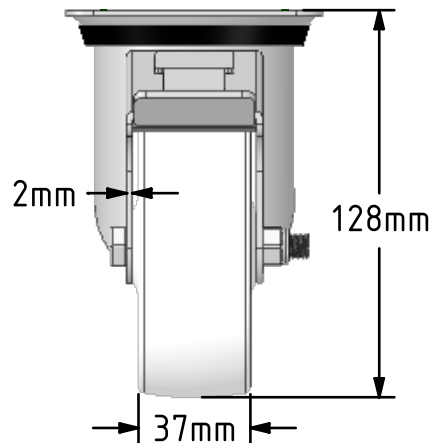
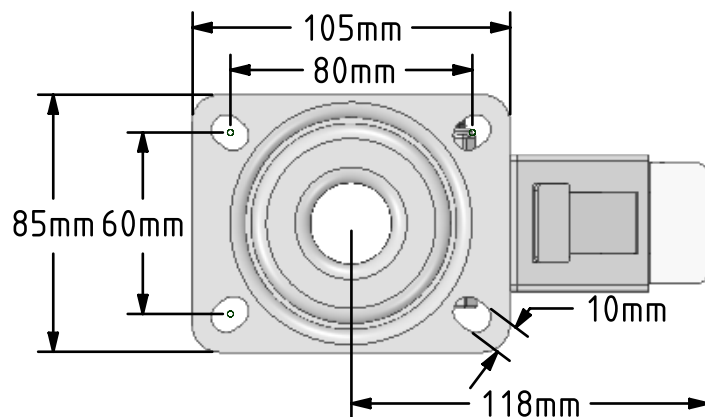


**DRAWING DISCLAIMER**


COPYRIGHT OF THIS DRAWING IS RESERVED BY BIL GROUP LTD. IT IS ISSUED ON CONDITION THAT IT IS NOT REPRODUCED, COPIED, OR DISCLOSED TO A THIRD PARTY EITHER WHOLLY OR IN PART WITHOUT THE CONSENT IN WRITING OF BIL GROUP LTD.

**Description:**

BZMM100NYBJSWB

Pressed steel swivel castor with 12mm bolt hole fixing fitted with a white nylon wheel with ball bearing and a total lock brake. Wheel diameter 100mm, tread width 37mm, overall height 128mm. Load capacity 180kg.



	NAME	DATE	 BIL Group Ltd, Porte Marsh Road, Calne Wiltshire, SN11 9BW, United Kingdom Tel +44 (0)1249 822 222 Fax: +44 (0)1249 822 300 www.bilgroup.co.uk	
DRAWN	Matt	19/03/19		
APPROVED BY	Chris	19/03/19		
SCALE	2:5	19/03/19		
WEIGHT	0.749kg	19/03/19		
UNLESS OTHERWISE SPECIFIED DIMENSIONS ARE IN MILLIMETRES			TITLE	
Unspecified Tolerances Machining $\pm 0.25\text{mm}$ Fabrication $\pm 1\text{mm}$			BZMM100NYBJSWB	
			SIZE A4	DWG NO. BILCW03BZMM100NYBJSWB__02
			FILE NAME BILCW03BZMM100NYBJSWB__02.PDF	REV 2
			SHEET 1 OF 1	