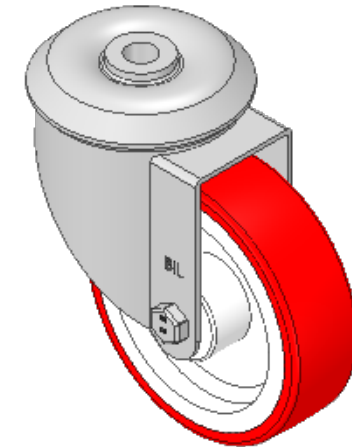
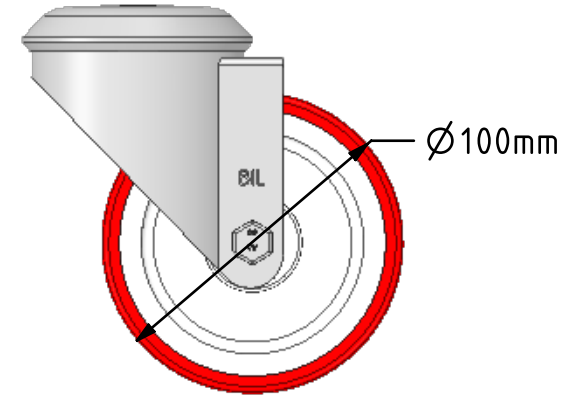
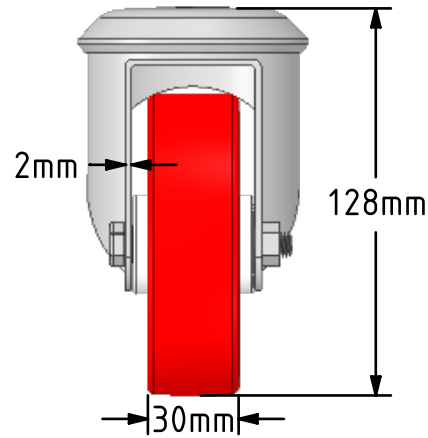
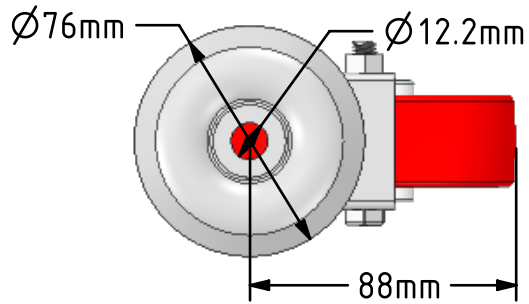


DRAWING DISCLAIMER
 COPYRIGHT OF THIS DRAWING IS RESERVED BY BIL GROUP LTD. IT IS ISSUED ON CONDITION THAT IT IS NOT REPRODUCED, COPIED, OR DISCLOSED TO A THIRD PARTY EITHER WHOLLY OR IN PART WITHOUT THE CONSENT IN WRITING OF BIL GROUP LTD.



Description:
 BZMM100NPBBH12

Pressed steel swivel castor with 12mm bolt hole fixing fitted with a red polyurethane white nylon centred wheel with roller bearing. Wheel diameter 100mm, tread width 30mm, overall height 128mm. Load capacity 180kg.



	NAME	DATE
DRAWN	Matt	19/03/19
APPROVED BY	Chris	19/03/19
SCALE	2:5	19/03/19
WEIGHT	0.687kg	19/03/19

UNLESS OTHERWISE SPECIFIED DIMENSIONS ARE IN MILLIMETRES
 Unspecified Tolerances
 Machining $\pm 0.25\text{mm}$
 Fabrication $\pm 1\text{mm}$

 BIL Group Ltd, Porte Marsh Road, Calne Wiltshire, SN11 9BW, United Kingdom
 Tel +44 (0)1249 822 222 Fax: +44 (0)1249 822 300
 www.bilgroup.co.uk

TITLE
 BZMM100NPBBH12

SIZE	DWG NO.	REV
A4	BILCW03BZMM100NPBBH12_02	2

FILE NAME BILCW03BZMM100NPBBH12_02.PDF SHEET 1 OF 1