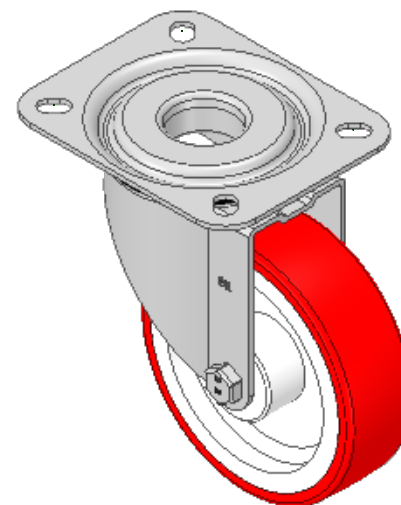
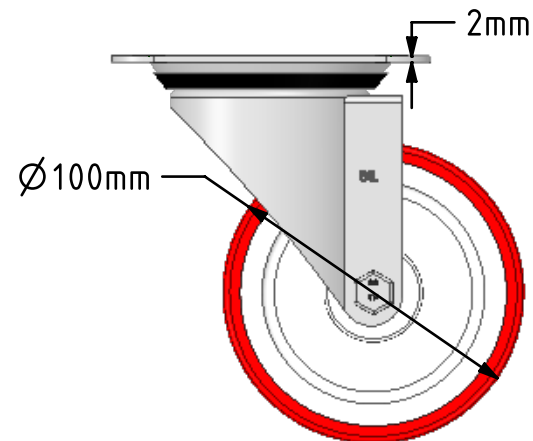
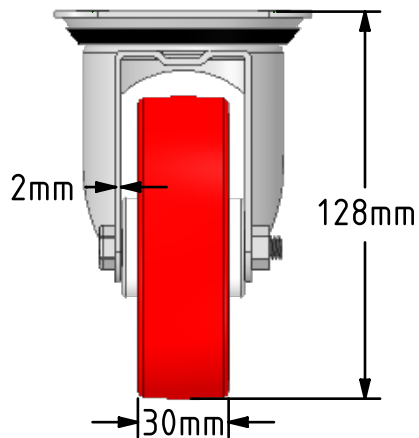
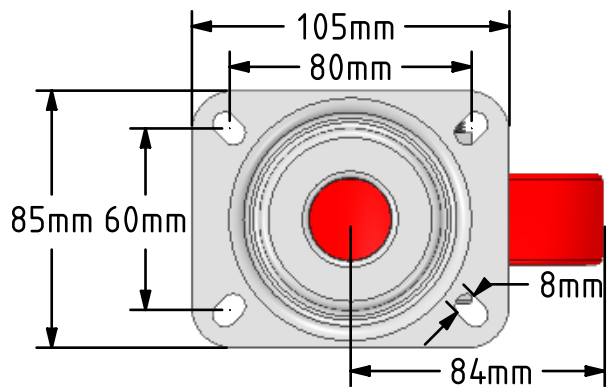
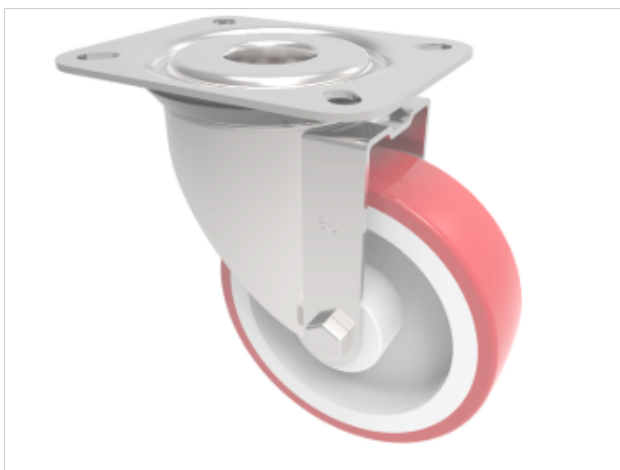


DRAWING DISCLAIMER
 COPYRIGHT OF THIS DRAWING IS RESERVED BY BIL GROUP LTD. IT IS ISSUED ON CONDITION THAT IT IS NOT REPRODUCED, COPIED, OR DISCLOSED TO A THIRD PARTY EITHER WHOLLY OR IN PART WITHOUT THE CONSENT IN WRITING OF BIL GROUP LTD.



Description:
 BZMM100NPB

Pressed steel swivel castor, fitted with a top plate, red polyurethane on white nylon cantered wheel, with roller bearings, 100mm wheel diameter, 30mm tread width, 128mm overall height, 105 x 85mm top plate, 80 x 60mm bolt holes, with a load capacity of 180kgs



	NAME	DATE
DRAWN	Matt	19/03/19
APPROVED BY	Tim W	19/03/19
SCALE	2:5	19/03/19
WEIGHT	0.655kg	19/03/19

 BIL Group Ltd, Porte Marsh Road, Calne
 Wiltshire, SN11 9BW, United Kingdom
 Tel +44 (0)1249 822 222 Fax: +44 (0)1249 822 300
 www.bilgroup.co.uk

TITLE	
BZMM100NPB	

UNLESS OTHERWISE SPECIFIED DIMENSIONS ARE IN MILLIMETRES
 Unspecified Tolerances
 Machining ± 0.25mm
 Fabrication ± 1mm

SIZE	DWG NO.	REV
A4	BILCW03BZMM100NPB_02	2
FILE NAME	BILCW03BZMM100NPB_02.PDF SHEET 1 OF 1	