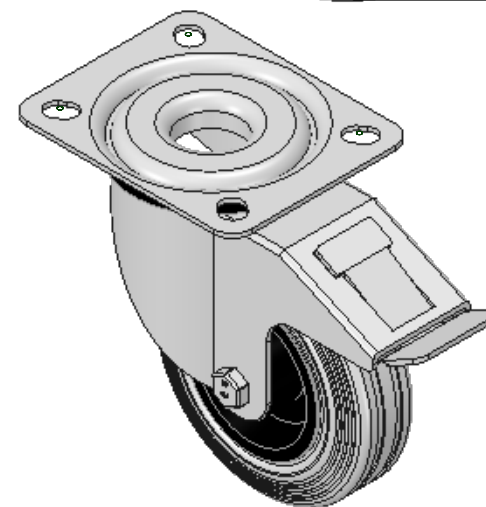
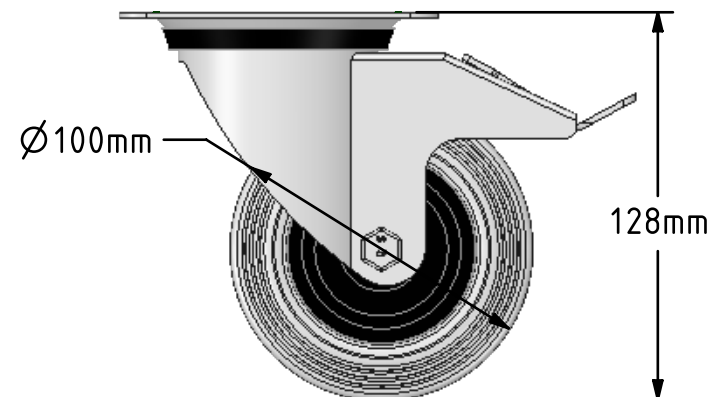
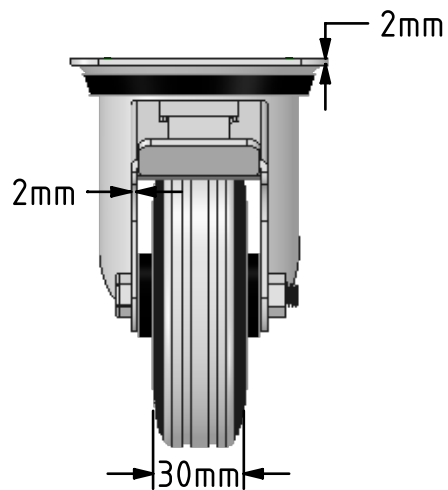
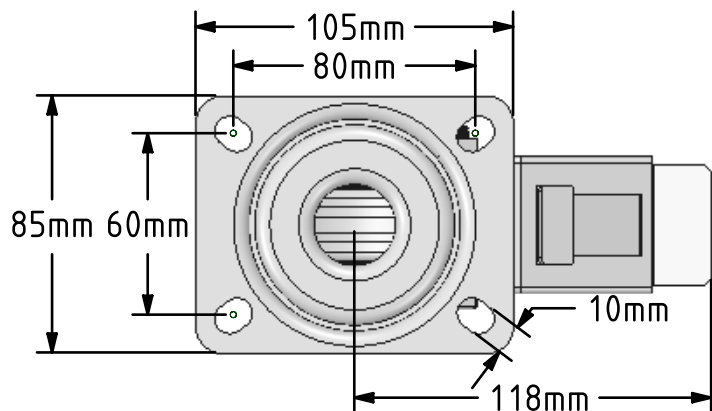


DRAWING DISCLAIMER
 COPYRIGHT OF THIS DRAWING IS RESERVED BY BIL GROUP LTD. IT IS ISSUED ON CONDITION THAT IT IS NOT REPRODUCED, COPIED, OR DISCLOSED TO A THIRD PARTY EITHER WHOLLY OR IN PART WITHOUT THE CONSENT IN WRITING OF BIL GROUP LTD.



Description:
 BZMM100GRBSWB

Pressed steel swivel castor with top plate fixing fitted with grey rubber tyre on black polypropylene centre wheel with roller bearing and swivel wheel brake. Wheel diameter 100mm, tread width 30mm, overall height 128mm, plate size 105mm x 85mm, hole centres 80mm x 60mm. Load capacity 70kg.



	NAME	DATE
DRAWN	Matt	03/07/18
APPROVED BY	Chris	03/07/18
SCALE	2:5	03/07/18
WEIGHT	0.852kg	03/07/18

UNLESS OTHERWISE SPECIFIED DIMENSIONS ARE IN MILLIMETRES

Unspecified Tolerances
 Machining ± 0.25mm
 Fabrication ± 1mm



BIL Group Ltd, Porte Marsh Road, Calne
 Wiltshire, SN11 9BW, United Kingdom
 Tel +44 (0)1249 822 222 Fax: +44 (0)1249 822 300
 www.bilgroup.co.uk

TITLE

BZMM100GRBSWB

SIZE	DWG NO.	REV
A4	BILCW03BZMM100GRBSWB_01	1

FILE NAME BILCW03BZMM100GRBSWB_01.PDF SHEET 1 OF 1