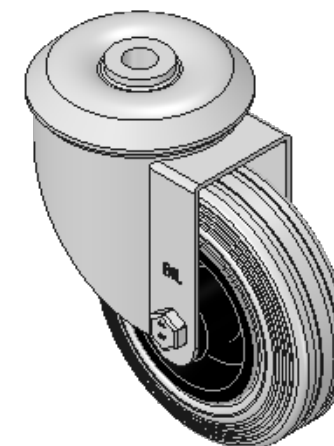
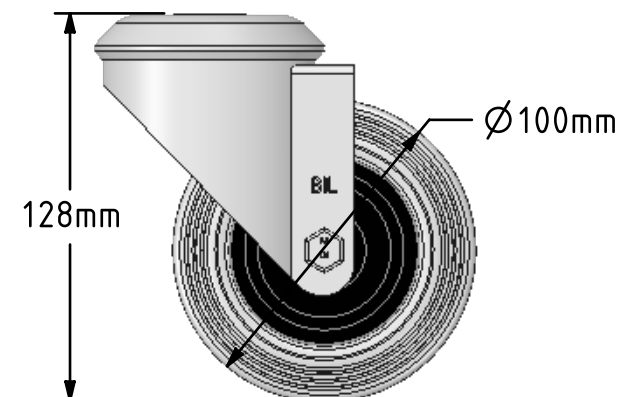
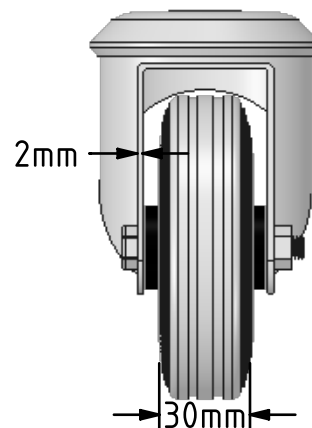
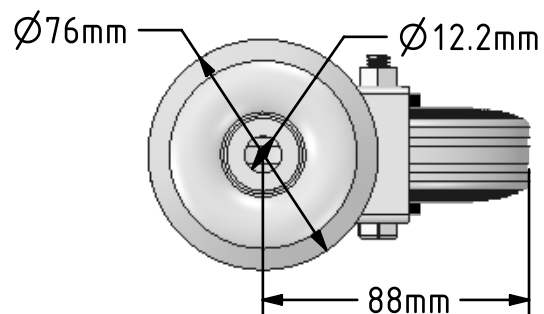


**DRAWING DISCLAIMER**


COPYRIGHT OF THIS DRAWING IS RESERVED BY BIL GROUP LTD. IT IS ISSUED ON CONDITION THAT IT IS NOT REPRODUCED, COPIED, OR DISCLOSED TO A THIRD PARTY EITHER WHOLLY OR IN PART WITHOUT THE CONSENT IN WRITING OF BIL GROUP LTD.

**Description:**

BZMM100GRBBH12

Pressed steel swivel castor with 12mm bolt hole fitted with a grey rubber tyre on black polypropylene centre with roller bearing. Wheel diameter 100mm, tread width 30mm, overall height 128mm, Load capacity 70kg.



	NAME	DATE	 <div>BIL Group Ltd, Porte Marsh Road, Calne Wiltshire, SN11 9BW, United Kingdom Tel +44 (0)1249 822 222 Fax: +44 (0)1249 822 300 www.bilgroup.co.uk</div>	
DRAWN	Matt	18/01/18		
APPROVED BY	Chris	18/01/18		
SCALE	2:5	18/01/18		
WEIGHT	0.744kg	18/01/18		
<div>UNLESS OTHERWISE SPECIFIED DIMENSIONS ARE IN MILLIMETRES</div> <div>Unspecified Tolerances Machining ± 0.25mm Fabrication ± 1mm</div>			TITLE	
			BZMM100GRBBH12	
			SIZE	DWG NO.
			A4	BILCW03BZMM100GRBBH12__01
			REV	
			1	
			FILE NAME	BILCW03BZMM100GRBBH12__01.PDF
			SHEET 1 OF 1	