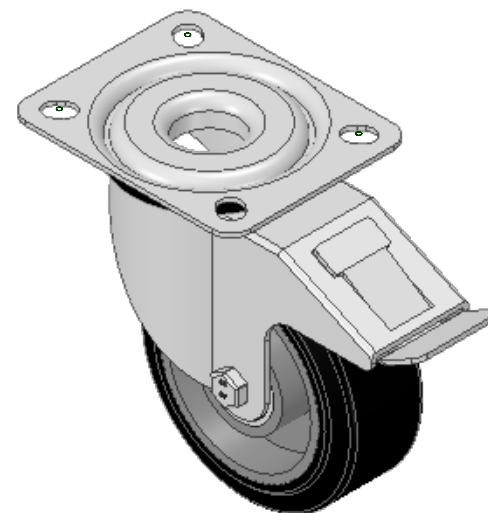
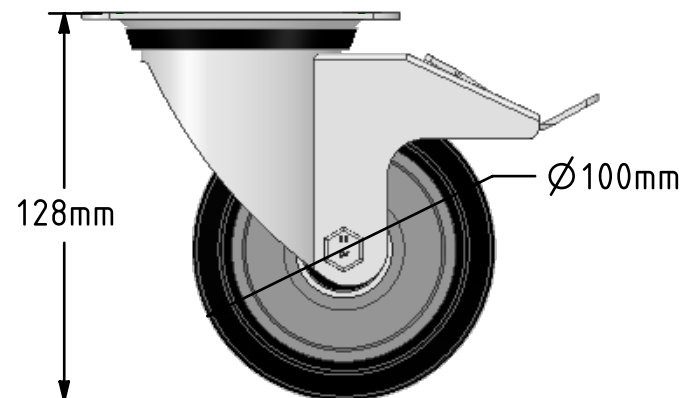
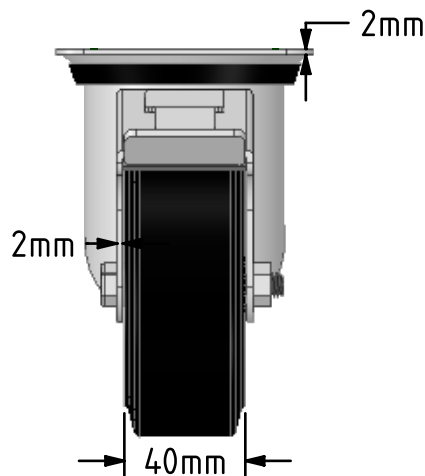
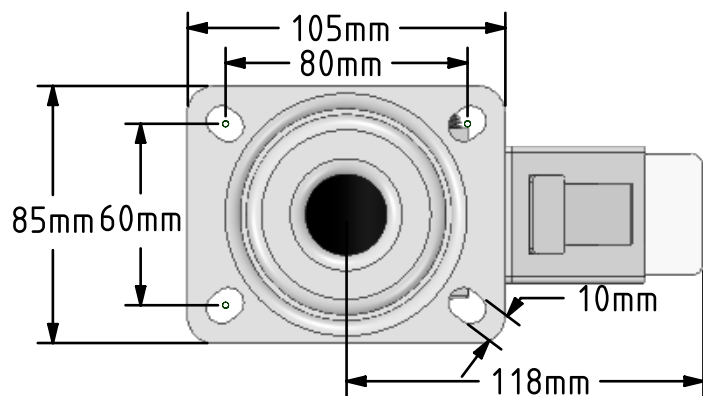


DRAWING DISCLAIMER
 COPYRIGHT OF THIS DRAWING IS RESERVED BY BIL GROUP LTD. IT IS ISSUED ON CONDITION THAT IT IS NOT REPRODUCED, COPIED, OR DISCLOSED TO A THIRD PARTY EITHER WHOLLY OR IN PART WITHOUT THE CONSENT IN WRITING OF BIL GROUP LTD.



Description:
 BZMM100ERBJSWB

Pressed steel swivel castor top plate fixing fitted with a black high elastic natural 65 shore A rubber tyre aluminium centred wheel with ball bearings with a total lock brake. Wheel diameter 100mm, tread width 40mm, overall height 128mm, top plate 105mm x 85mm, hole centres 80mm x 60mm. Load capacity 180kg. REACH compliant also PAH-Free rubber to confirm to EU-directive 2005/69/EC



	NAME	DATE
DRAWN	Matt	19/03/19
APPROVED BY	Tim W	19/03/19
SCALE	2:5	19/03/19
WEIGHT	1.035kg	19/03/19



BIL Group Ltd, Porte Marsh Road, Calne
 Wiltshire, SN11 9BW, United Kingdom
 Tel +44 (0)1249 822 222 Fax: +44 (0)1249 822 300
 www.bilgroup.co.uk

TITLE		REV
BZMM100ERBJSWB		2
SIZE	DWG NO.	
A4	BILCW03BZMM100ERBJSWB_02	
FILE NAME		SHEET 1 OF 1
BILCW03BZMM100ERBJSWB_02.PDF		

UNLESS OTHERWISE SPECIFIED DIMENSIONS ARE IN MILLIMETRES

Unspecified Tolerances
 Machining ± 0.25mm
 Fabrication ± 1mm