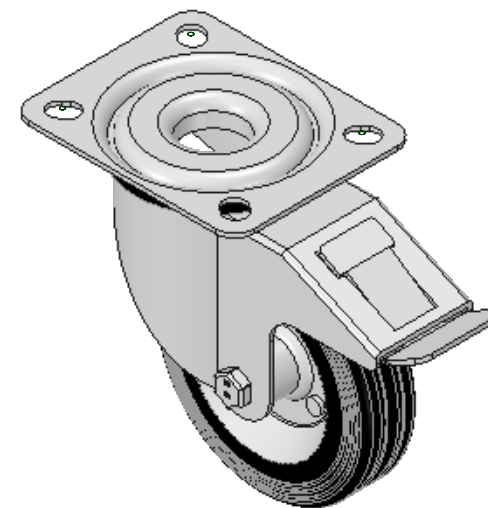
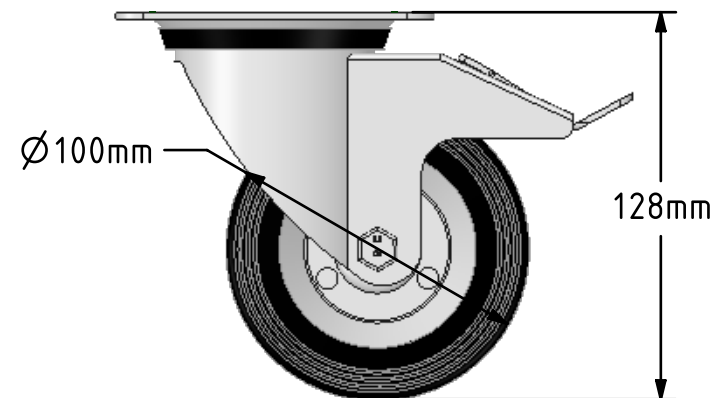
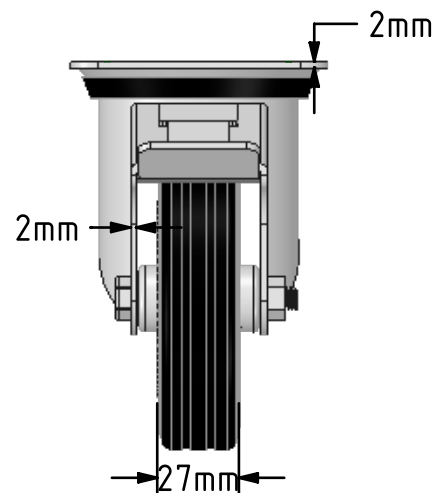
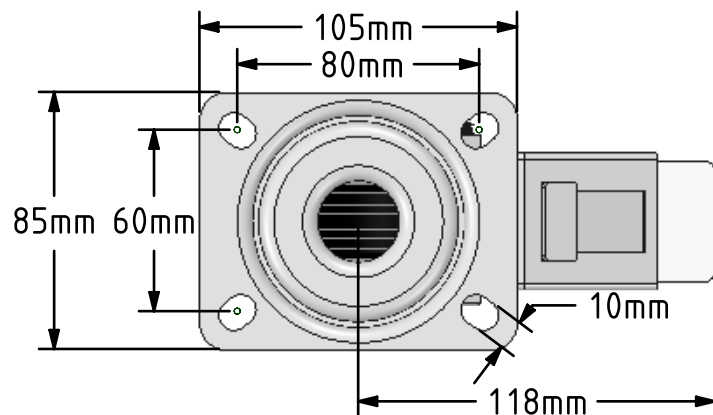


DRAWING DISCLAIMER

COPYRIGHT OF THIS DRAWING IS RESERVED BY BIL GROUP LTD. IT IS ISSUED ON CONDITION THAT IT IS NOT REPRODUCED, COPIED, OR DISCLOSED TO A THIRD PARTY EITHER WHOLLY OR IN PART WITHOUT THE CONSENT IN WRITING OF BIL GROUP LTD.

**Description:****BZMM100BSBSWB**

Pressed steel swivel castor with top plate fixing fitted with a black rubber tyre on steel disc centred wheel with roller bearing and swivel wheel brake. Wheel diameter 100mm, tread width 27mm, overall height 128mm, top plate 105mm x 85mm, hole centres 80mm x 60mm. Load capacity 70kg.



	NAME	DATE
DRAWN	Matt	05/07/18
APPROVED BY	Tim W	05/07/18
SCALE	2:5	05/07/18
WEIGHT	0.873kg	05/07/18

UNLESS OTHERWISE SPECIFIED DIMENSIONS ARE IN MILLIMETRES

Unspecified Tolerances
Machining $\pm 0.25\text{mm}$
Fabrication $\pm 1\text{mm}$



BIL Group Ltd, Porte Marsh Road, Calne
Wiltshire, SN11 9BW, United Kingdom
Tel +44 (0)1249 822 222 Fax: +44 (0)1249 822 300
www.bilgroup.co.uk

TITLE

BZMM100BSBSWB

SIZE DWG NO.

A4

BILCW03BZMM100BSBSWB_01

REV

1

FILE NAME BILCW03BZMM100BSBSWB_01.PDF

SHEET 1 OF 1