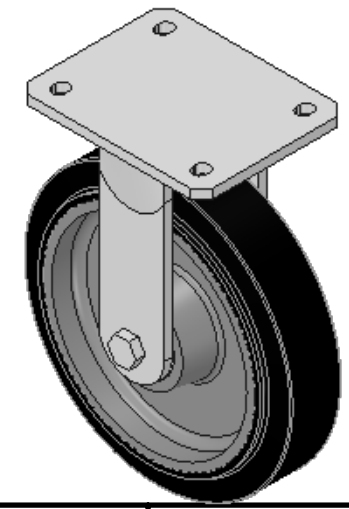
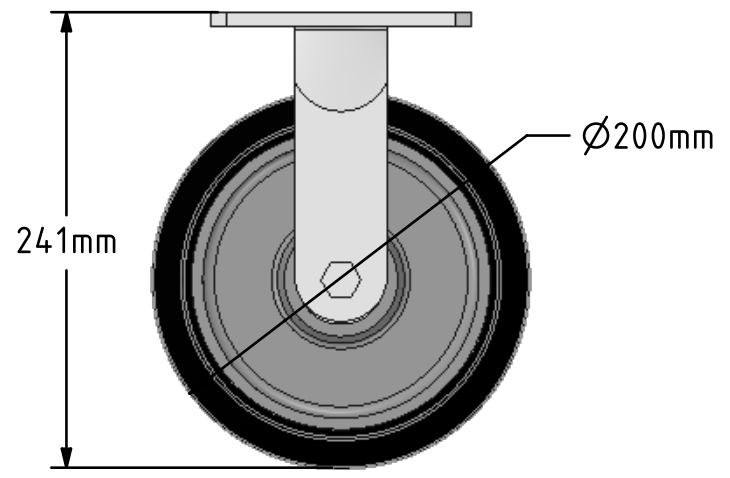
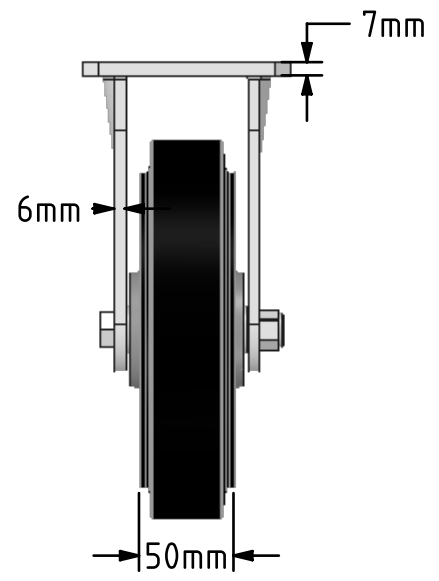
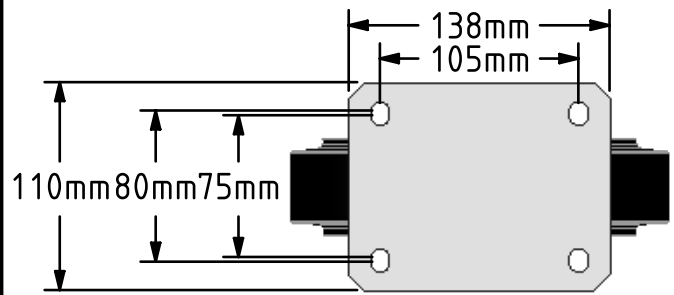


DRAWING DISCLAIMER
 COPYRIGHT OF THIS DRAWING IS RESERVED BY BIL GROUP LTD. IT IS ISSUED ON CONDITION THAT IT IS NOT REPRODUCED, COPIED, OR DISCLOSED TO A THIRD PARTY EITHER WHOLLY OR IN PART WITHOUT THE CONSENT IN WRITING OF BIL GROUP LTD.




Description:
 BZMJF200CUBJ

Fabricated white zinc ROHS plated fixed castor with a top plate fixing fitted with a black elastic rubber on cast iron centred wheel with ball bearings. Wheel diameter 200mm, tread width 50mm, overall height 240mm, top plate 138mm x 110mm, hole centres 105mm x 80mm/75mm. Load capacity 500kg.

- At 6 kph speed, the load of each wheel is advised to be 80% of the load at 4kph
- At 10 kph speed, the load of each wheel is advised to be 55% of the load at 4 kph.
- At 16 kph speed, the load of each wheel is advised to be 45% of the load at 4kph.
- At 20 kph speed, the load of each wheel is advised to be 35% of the load at 4 kph.
- No data for elastic rubber wheel over 20 kph.



	NAME	DATE	 BIL Group Ltd, Porte Marsh Road, Calne Wiltshire, SN11 9BW, United Kingdom Tel +44 (0)1249 822 222 Fax: +44 (0)1249 822 300 www.bilgroup.eu
DRAWN	Matt	23/11/16	
APPROVED BY	Tim W	23/11/16	
SCALE	1:4	23/11/16	
WEIGHT	4.863kg	23/11/16	
UNLESS OTHERWISE SPECIFIED DIMENSIONS ARE IN MILLIMETRES Unspecified Tolerances Machining ± 0.25mm Fabrication ± 1mm			TITLE BZMJF200CUBJ
SIZE		DWG NO.	REV
A4		BILCW03BZMJF200CUBJ_01	1
FILE NAME		SHEET 1 OF 1	
BILCW03BZMJF200CUBJ_01.PDF			