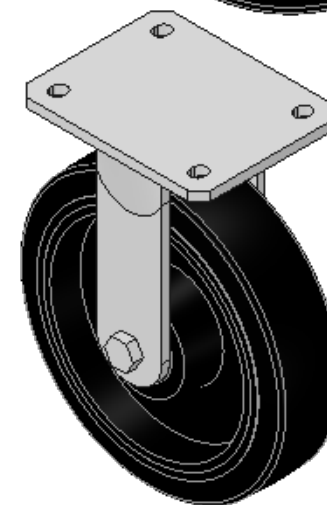
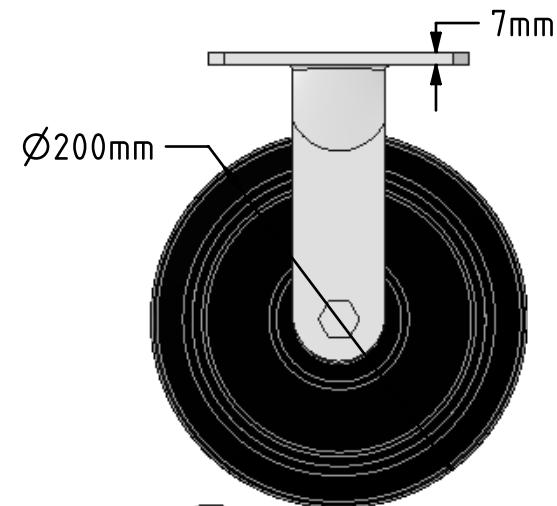
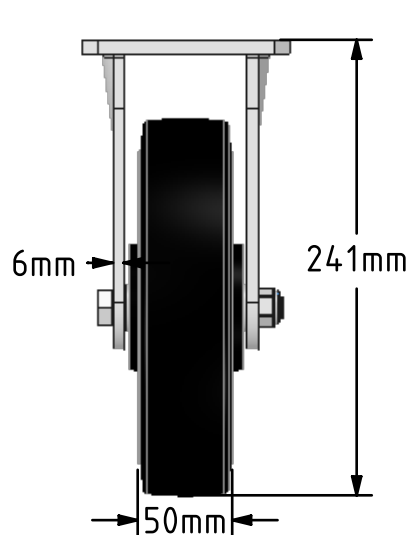
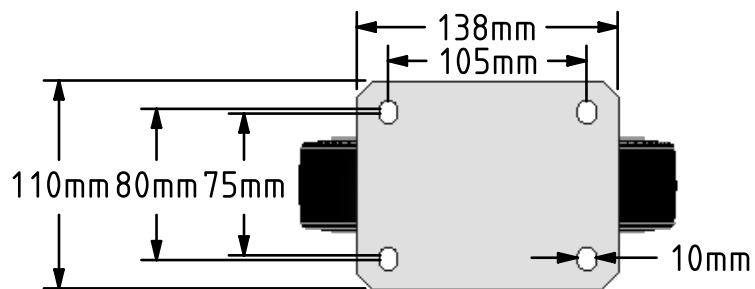


DRAWING DISCLAIMER  
 COPYRIGHT OF THIS DRAWING IS RESERVED BY BIL GROUP LTD. IT IS ISSUED ON CONDITION THAT IT IS NOT REPRODUCED, COPIED, OR DISCLOSED TO A THIRD PARTY EITHER WHOLLY OR IN PART WITHOUT THE CONSENT IN WRITING OF BIL GROUP LTD.



Description:  
 BZMJF200CRBJ

Fabricated white zinc ROHS plated fixed castor with a top plate fixing fitted with a black elastic rubber tyred cast iron centred wheel with ball bearings. Wheel diameter 200mm, tread width 50mm, overall height 240mm, top plate 138mm x 110mm, hole centres 105mm x 80/75mm. Load capacity 450kg.



	NAME	DATE
DRAWN	Matt	16/04/18
APPROVED BY	Chris	16/04/18
SCALE	1:4	16/04/18
WEIGHT	5.455kg	16/04/18

UNLESS OTHERWISE SPECIFIED DIMENSIONS ARE IN MILLIMETRES

Unspecified Tolerances  
 Machining ± 0.25mm  
 Fabrication ± 1mm



BIL Group Ltd, Porte Marsh Road, Calne  
 Wiltshire, SN11 9BW, United Kingdom  
 Tel +44 (0)1249 822 222 Fax: +44 (0)1249 822 300  
 www.bilgroup.co.uk

TITLE

BZMJF200CRBJ

SIZE	DWG NO.	REV
A4	BILCW03BZMJF200CRBJ_01	1

FILE NAME BILCW03BZMJF200CRBJ\_01.PDF SHEET 1 OF 1