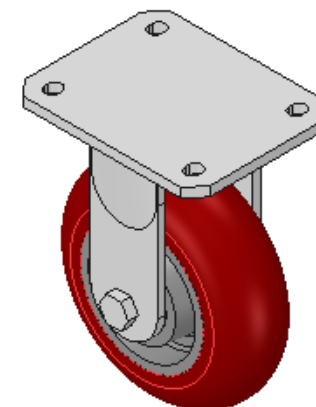
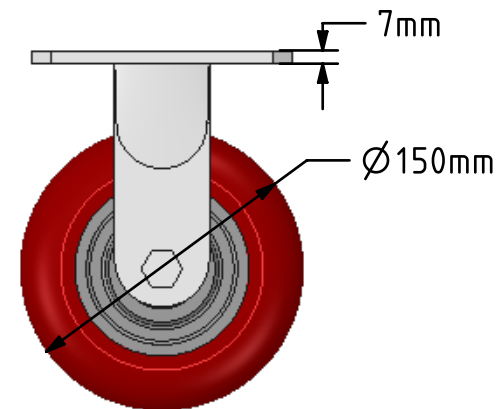
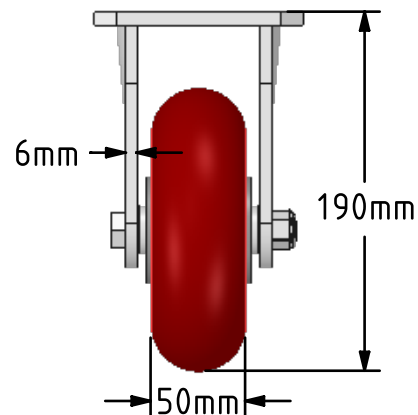
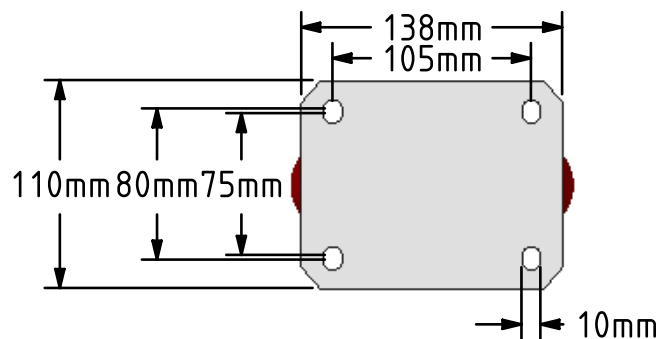
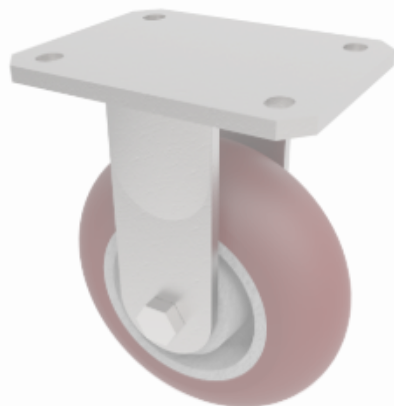


DRAWING DISCLAIMER  
 COPYRIGHT OF THIS DRAWING IS RESERVED BY BIL GROUP LTD. IT IS ISSUED ON CONDITION THAT IT IS NOT REPRODUCED, COPIED, OR DISCLOSED TO A THIRD PARTY EITHER WHOLLY OR IN PART WITHOUT THE CONSENT IN WRITING OF BIL GROUP LTD.



Description:  
 BZMJF150RPTABJ

Fabricated white zinc ROHS plated fixed castor with a top plate fixing fitted with a round profile polyurethane on aluminium centred wheel with a ball journal bearings. Wheel diameter 150mm, tread width 30mm, overall height 190mm, top plate 135mm x 110mm, hole centres 105mm x 80mm. Load capacity 575kg



	NAME	DATE
DRAWN	Matt	07/06/17
APPROVED BY	Tim W	07/06/17
SCALE	1:4	07/06/17
WEIGHT	2.874kg	07/06/17

UNLESS OTHERWISE SPECIFIED DIMENSIONS ARE IN MILLIMETRES  
 Unspecified Tolerances  
 Machining ± 0.25mm  
 Fabrication ± 1mm

 BIL Group Ltd, Porte Marsh Road, Calne Wiltshire, SN11 9BW, United Kingdom  
 Tel +44 (0)1249 822 222 Fax: +44 (0)1249 822 300  
 www.bilgroup.co.uk

TITLE  
**BZMJF150RPTABJ**

SIZE	DWG NO.	REV
A4	BILCW03BZMJF150RPTABJ_01	1

FILE NAME BILCW03BZMJF150RPTABJ\_01.PDF SHEET 1 OF 1