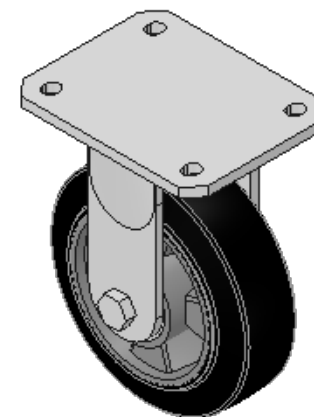
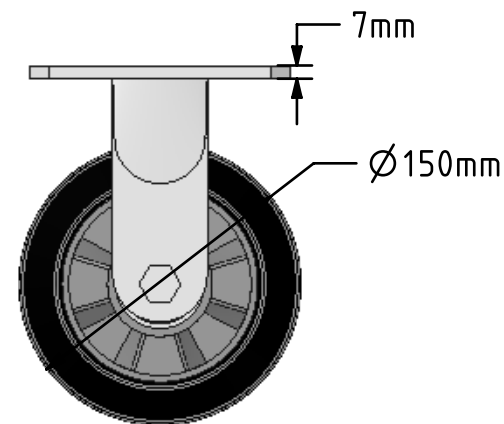
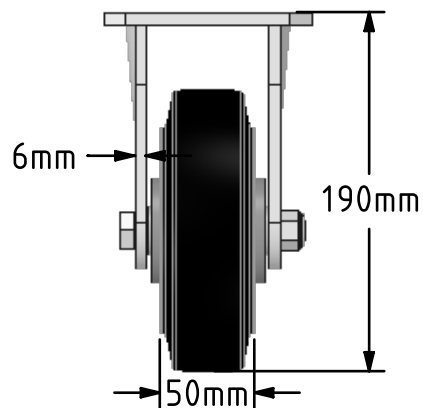
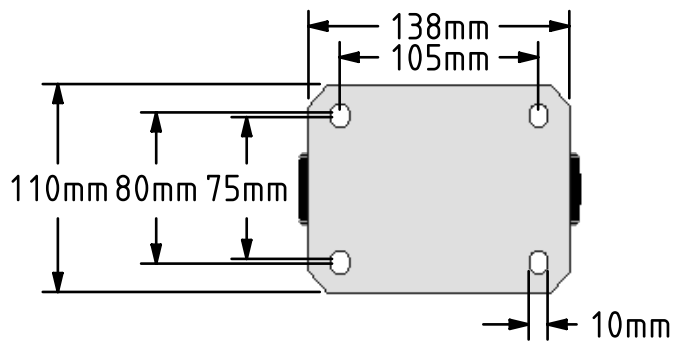
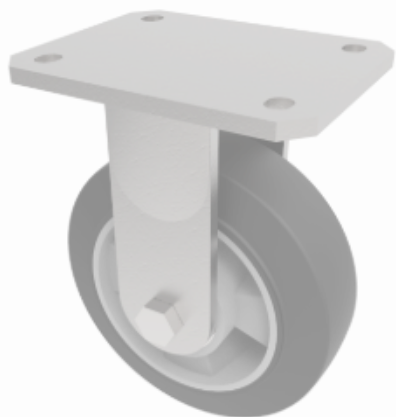


DRAWING DISCLAIMER  
 COPYRIGHT OF THIS DRAWING IS RESERVED BY BIL GROUP LTD. IT IS ISSUED ON CONDITION THAT IT IS NOT REPRODUCED, COPIED, OR DISCLOSED TO A THIRD PARTY EITHER WHOLLY OR IN PART WITHOUT THE CONSENT IN WRITING OF BIL GROUP LTD.



**Description:**  
 BZMJF150ERBJ

Fabricated white zinc plated fixed castor with top plate fixing fitted with a black high elastic natural 65 shore A rubber tyred wheel on aluminium centre with ball bearing. Wheel diameter 150mm, tread width 50mm, overall height 190mm, plate size 138mm x 110mm, hole centres 105mm x 80mm/75mm. Load capacity 350kg. REACH compliant also PAH-Free rubber to confirm to EU-directive 2005/69/EC



	NAME	DATE
DRAWN	Matt	08/06/17
APPROVED BY	Tim W	08/06/17
SCALE	1:4	08/06/17
WEIGHT	2.529kg	08/06/17

 BIL Group Ltd, Porte Marsh Road, Calne  
 Wiltshire, SN11 9BW, United Kingdom  
 Tel +44 (0)1249 822 222 Fax: +44 (0)1249 822 300  
 www.bilgroup.co.uk

TITLE		
BZMJF150ERBJ		

UNLESS OTHERWISE SPECIFIED DIMENSIONS ARE IN MILLIMETRES  
 Unspecified Tolerances  
 Machining ± 0.25mm  
 Fabrication ± 1mm

SIZE	DWG NO.	REV
A4	BILCW03BZMJF150ERBJ_01	1
FILE NAME	BILCW03BZMJF150ERBJ_01.PDF SHEET 1 OF 1	