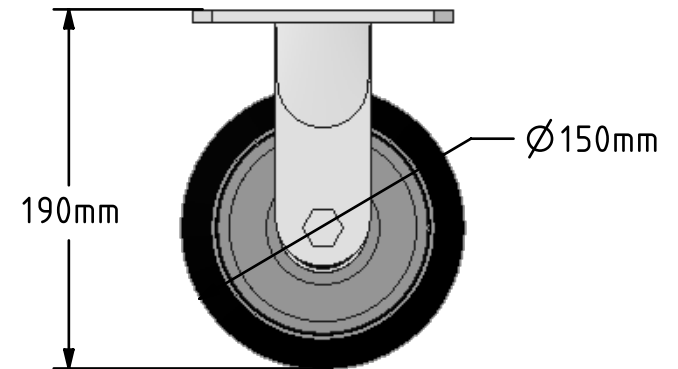
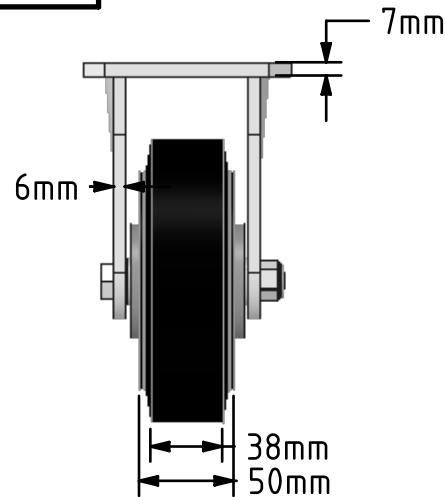
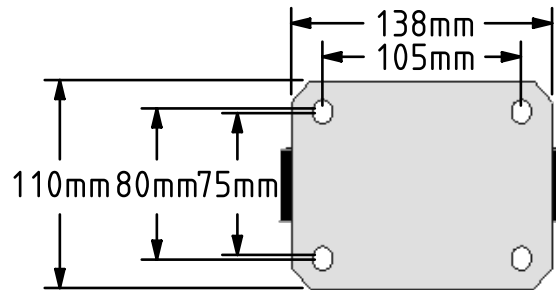


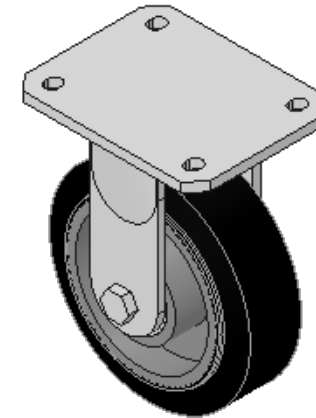
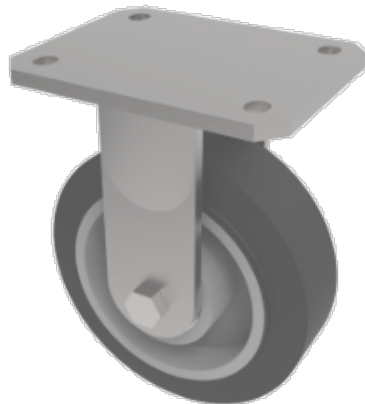
DRAWING DISCLAIMER


COPYRIGHT OF THIS DRAWING IS RESERVED BY BIL GROUP LTD. IT IS ISSUED ON CONDITION THAT IT IS NOT REPRODUCED, COPIED, OR DISCLOSED TO A THIRD PARTY EITHER WHOLLY OR IN PART WITHOUT THE CONSENT IN WRITING OF BIL GROUP LTD.

**Description:**
BZMJF150CUBJ

Fabricated white zinc ROHS plated fixed castor with a top plate fixing fitted with a elastic rubber on cast iron centred wheel with ball bearings. Wheel diameter 150mm, tread width 50mm, overall height 190mm, top plate 138mm x 110mm, hole centres 105mm x 80mm/75mm. Load capacity 400kg

- At 6 kph speed, the load of each wheel is advised to be 80% of the load at 4kph
- At 10 kph speed, the load of each wheel is advised to be 55% of the load at 4 kph.
- At 16 kph speed, the load of each wheel is advised to be 45% of the load at 4kph.
- At 20 kph speed, the load of each wheel is advised to be 35% of the load at 4 kph.
- No data for elastic rubber wheel over 20 kph.



	NAME	DATE	 <div>BIL Group Ltd, Porte Marsh Road, Calne Wiltshire, SN11 9BW, United Kingdom Tel +44 (0)1249 822 222 Fax: +44 (0)1249 822 300 www.bilgroup.eu</div>	
DRAWN	Matt	20/10/16		
APPROVED BY	Tim W	20/10/16		
SCALE	1:4	20/10/16		
WEIGHT	3.688kg	20/10/16		
UNLESS OTHERWISE SPECIFIED DIMENSIONS ARE IN MILLIMETRES			TITLE	
Unspecified Tolerances Machining $\pm 0.25\text{mm}$ Fabrication $\pm 1\text{mm}$			BZMJF150CUBJ	
			SIZE A4	REV 1
			DWG NO. BILCW03BZMJF150CUBJ__01	
			FILE NAME BILCW03BZMJF150CUBJ__01.PDF	SHEET 1 OF 1