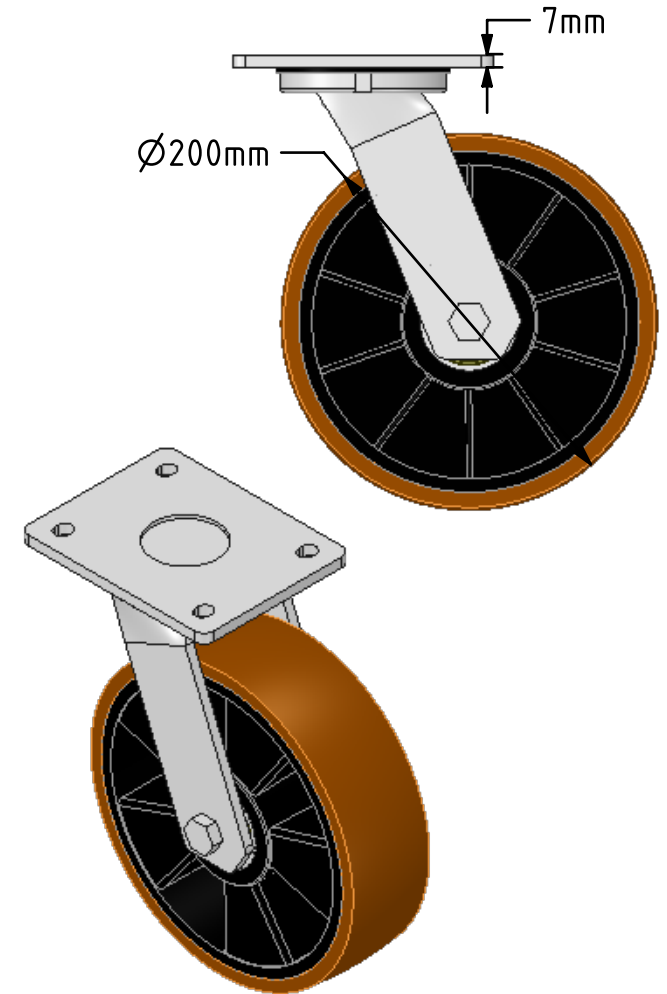
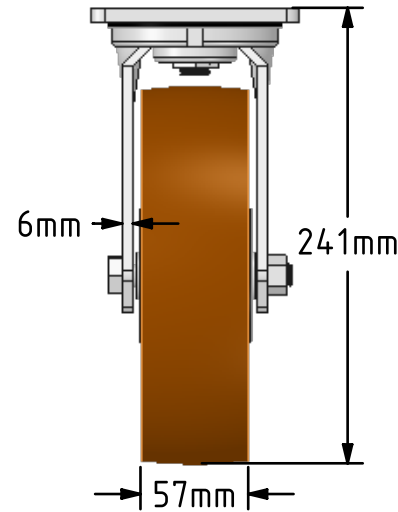
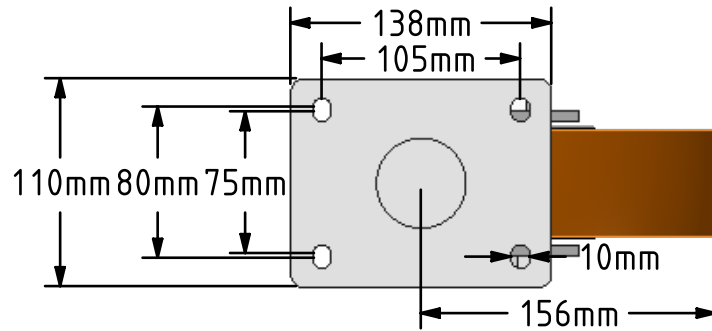


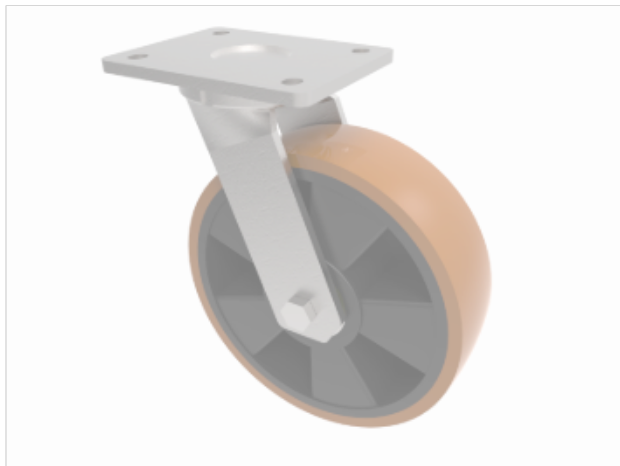
DRAWING DISCLAIMER

COPYRIGHT OF THIS DRAWING IS RESERVED BY BIL GROUP LTD. IT IS ISSUED ON CONDITION THAT IT IS NOT REPRODUCED, COPIED, OR DISCLOSED TO A THIRD PARTY EITHER WHOLLY OR IN PART WITHOUT THE CONSENT IN WRITING OF BIL GROUP LTD.

**Description:**

BZMJ200XPNB

Fabricated white zinc ROHS plated swivel castor with a top plate fixing fitted with a brown polyurethane tyred nylon centred wheel with ball bearings. Wheel diameter 200mm, tread width 57mm, overall height 241mm, top plate 138mm x 110mm, hole centres 105mm x 80mm. Load capacity 600kg. REACH compliant



	NAME	DATE
DRAWN	Matt	17/04/18
APPROVED BY	Tim W	17/04/18
SCALE	1:4	17/04/18
WEIGHT	3.689kg	17/04/18

UNLESS OTHERWISE SPECIFIED DIMENSIONS ARE IN MILLIMETRES

Unspecified Tolerances
Machining $\pm 0.25\text{mm}$
Fabrication $\pm 1\text{mm}$



BIL Group Ltd, Porte Marsh Road, Calne
Wiltshire, SN11 9BW, United Kingdom
Tel +44 (0)1249 822 222 Fax: +44 (0)1249 822 300
www.bilgroup.co.uk

TITLE

BZMJ200XPNB

SIZE

DWG NO.

A4

BILCW03BZMJ200XPNB_01

REV

1

FILE NAME BILCW03BZMJ200XPNB_01.PDF

SHEET 1 OF 1