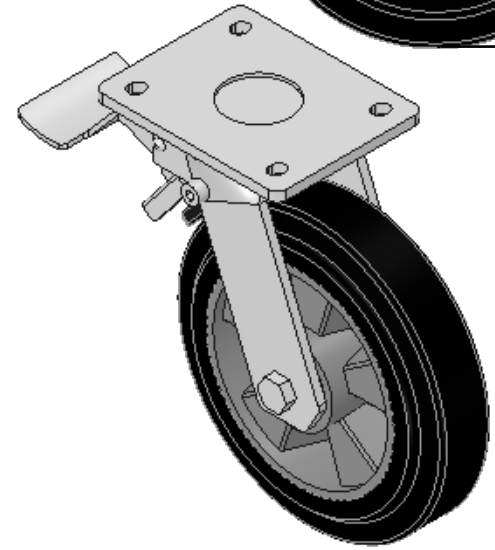
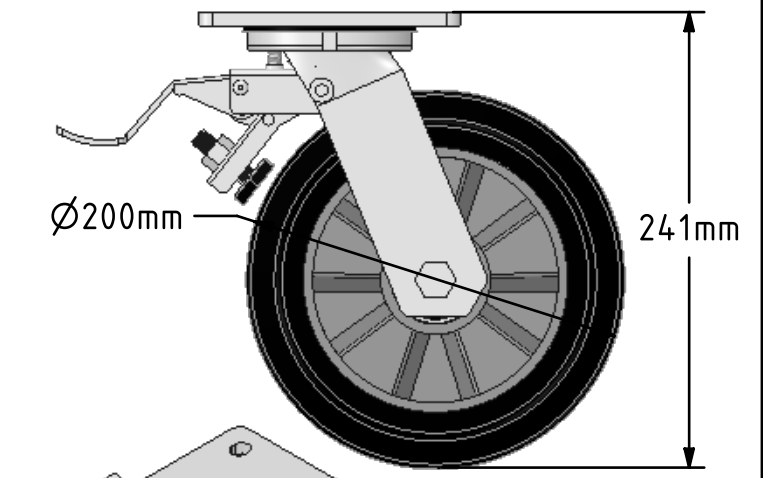
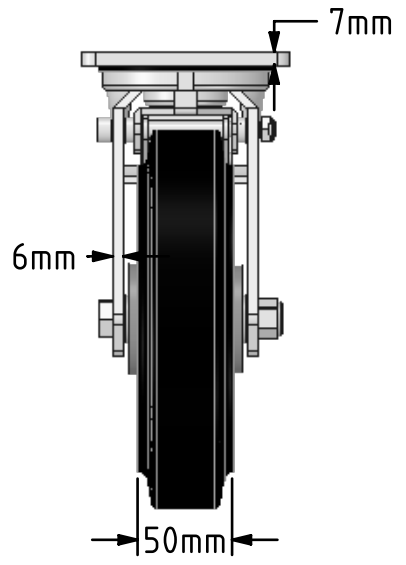
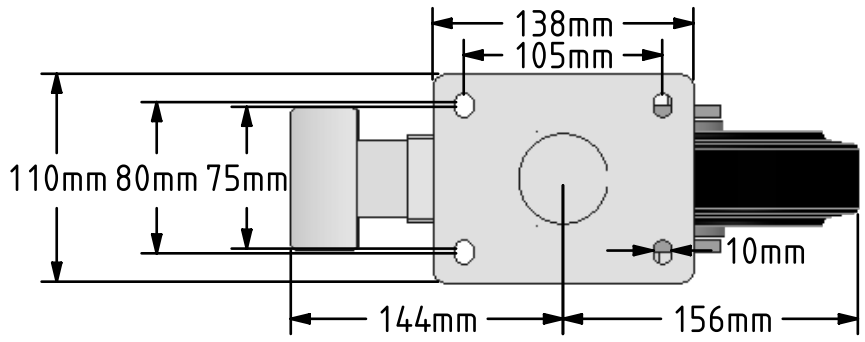


**DRAWING DISCLAIMER**  
 COPYRIGHT OF THIS DRAWING IS RESERVED BY BIL GROUP LTD. IT IS ISSUED ON CONDITION THAT IT IS NOT REPRODUCED, COPIED, OR DISCLOSED TO A THIRD PARTY EITHER WHOLLY OR IN PART WITHOUT THE CONSENT IN WRITING OF BIL GROUP LTD.



**Description:**  
 BZMJ200ERBJSWB  
 Fabricated white zinc ROHS plated swivel castor with a top plate fixing fitted with a black high elastic natural 65 shore A rubber tyred aluminium centred wheel with ball bearings and total lock brake. Wheel diameter 200mm, tread width 50mm, overall height 240mm, top plate 138mm x 110mm, hole centres 105mm x 80/75mm. Load capacity 500kg. REACH compliant also PAH-Free rubber to confirm to EU-directive 2005/69/EC



	NAME	DATE
DRAWN	Matt	13/04/18
APPROVED BY	Chris	13/04/18
SCALE	1:4	13/04/18
WEIGHT	4.204kg	13/04/18

**BIL**  
 BIL Group Ltd, Porte Marsh Road, Calne  
 Wiltshire, SN11 9BW, United Kingdom  
 Tel +44 (0)1249 822 222 Fax: +44 (0)1249 822 300  
 www.bilgroup.co.uk

UNLESS OTHERWISE SPECIFIED DIMENSIONS ARE IN MILLIMETRES  
 Unspecified Tolerances  
 Machining ± 0.25mm  
 Fabrication ± 1mm

TITLE		REV
BZMJ200ERBJSWB		1
SIZE	DWG NO.	
A4	BILCW03BZMJ200ERBJSWB_01	
FILE NAME	BILCW03BZMJ200ERBJSWB_01.PDF SHEET 1 OF 1	