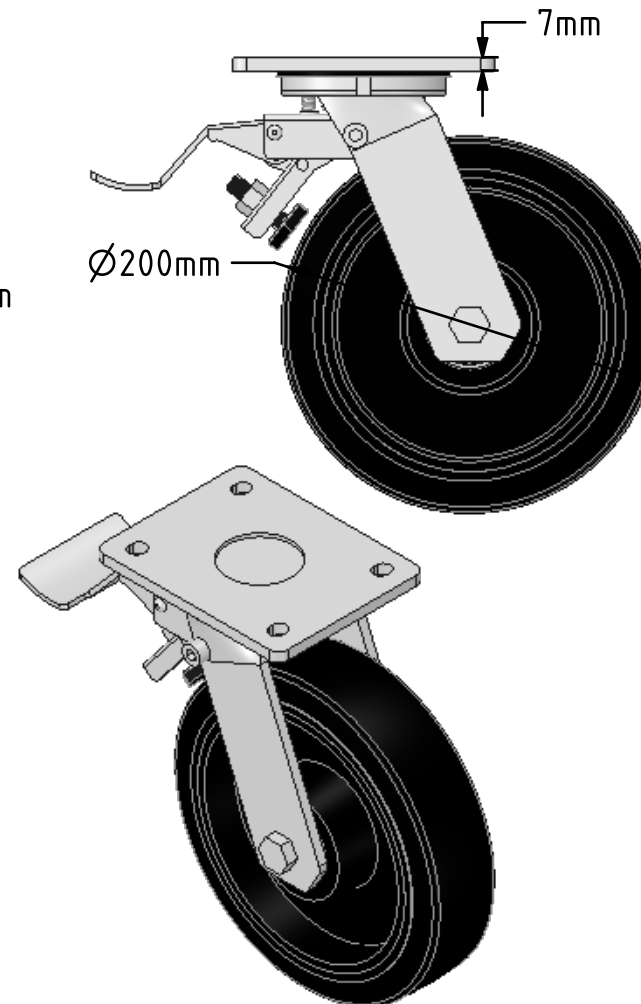
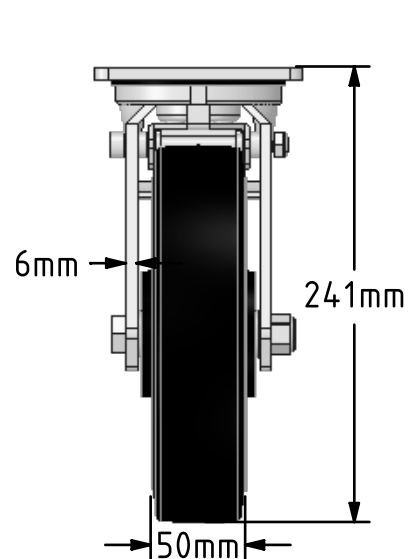
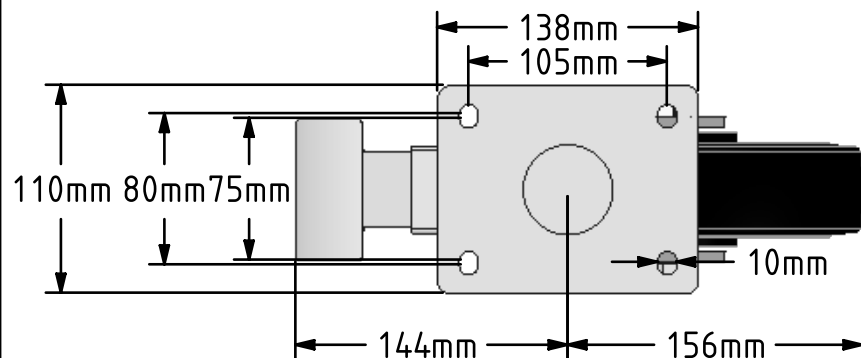


DRAWING DISCLAIMER

COPYRIGHT OF THIS DRAWING IS RESERVED BY BIL GROUP LTD. IT IS ISSUED ON CONDITION THAT IT IS NOT REPRODUCED, COPIED, OR DISCLOSED TO A THIRD PARTY EITHER WHOLLY OR IN PART WITHOUT THE CONSENT IN WRITING OF BIL GROUP LTD.

**Description:**

BZMJ200CRBJSWB

Fabricated white zinc ROHS plated swivel castor with a top plate fixing fitted with a elastic rubber on cast iron centred wheel with ball bearings and total lock brake. Wheel diameter 200mm, tread width 50mm, overall height 240mm, top plate 138mm x 110mm, hole centres 105mm x 80mm/75mm. Load capacity 450kg.



	NAME	DATE
DRAWN	Matt	16/04/18
APPROVED BY	Chris	16/04/18
SCALE	1:4	16/04/18
WEIGHT	6.572kg	16/04/18

UNLESS OTHERWISE SPECIFIED DIMENSIONS ARE IN MILLIMETRES

Unspecified Tolerances
Machining $\pm 0.25\text{mm}$
Fabrication $\pm 1\text{mm}$



BIL Group Ltd, Porte Marsh Road, Calne
Wiltshire, SN11 9BW, United Kingdom
Tel +44 (0)1249 822 222 Fax: +44 (0)1249 822 300
www.bilgroup.co.uk

TITLE

BZMJ200CRBJSWB

SIZE A4
DWG NO.

BILCW03BZMJ200CRBJSWB_01

REV
1

FILE NAME BILCW03BZMJ200CRBJSWB_01.PDF SHEET 1 OF 1