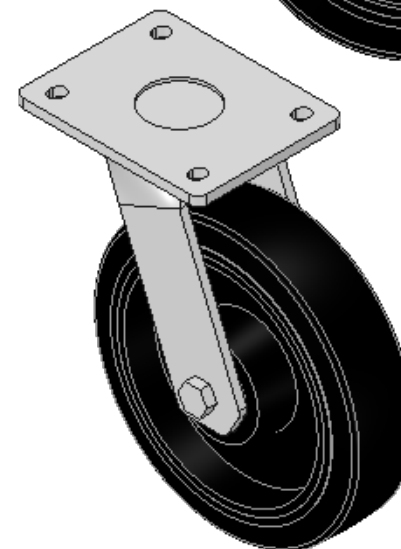
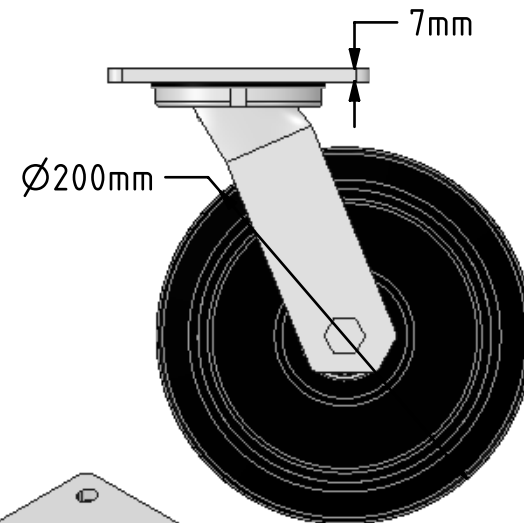
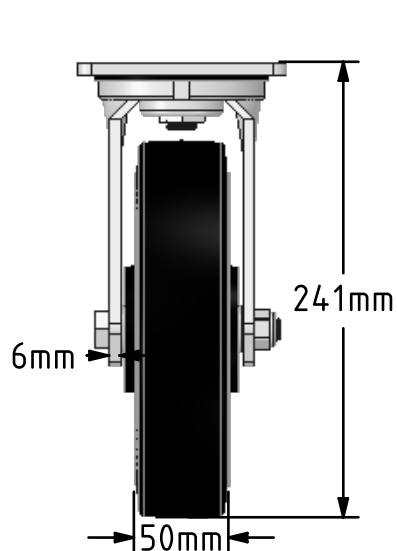
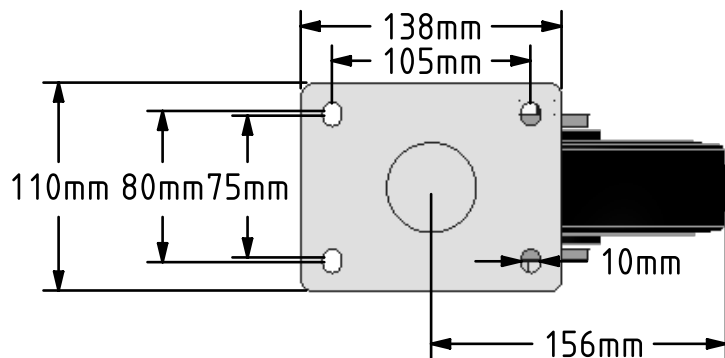


DRAWING DISCLAIMER  
 COPYRIGHT OF THIS DRAWING IS RESERVED BY BIL GROUP LTD. IT IS ISSUED ON CONDITION THAT IT IS NOT REPRODUCED, COPIED, OR DISCLOSED TO A THIRD PARTY EITHER WHOLLY OR IN PART WITHOUT THE CONSENT IN WRITING OF BIL GROUP LTD.



Description:  
 BZMJ200CRBJ

Fabricated white zinc ROHS plated swivel castor with a top plate fixing fitted with a black elastic rubber tyred cast iron centred wheel with ball bearings. Wheel diameter 200mm, tread width 50mm, overall height 240mm, top plate 138mm x 110mm, hole centres 105mm x 80/75mm. Load capacity 450kg.



|             | NAME    | DATE     |
|-------------|---------|----------|
| DRAWN       | Matt    | 16/04/18 |
| APPROVED BY | Chris   | 16/04/18 |
| SCALE       | 1:4     | 16/04/18 |
| WEIGHT      | 6.101kg | 16/04/18 |

 BIL Group Ltd, Porte Marsh Road, Calne  
 Wiltshire, SN11 9BW, United Kingdom  
 Tel +44 (0)1249 822 222 Fax: +44 (0)1249 822 300  
 www.bilgroup.co.uk

|       |             |  |
|-------|-------------|--|
| TITLE | BZMJ200CRBJ |  |
|-------|-------------|--|

UNLESS OTHERWISE SPECIFIED DIMENSIONS ARE IN MILLIMETRES  
 Unspecified Tolerances  
 Machining ± 0.25mm  
 Fabrication ± 1mm

|           |  |     |
|-----------|--|-----|
| SIZE      | DWG NO.                                | REV |
| A4        | BILCW03BZMJ200CRBJ_01                  | 1   |
| FILE NAME | BILCW03BZMJ200CRBJ_01.PDF SHEET 1 OF 1 |     |