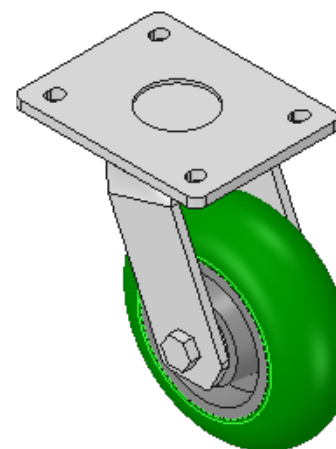
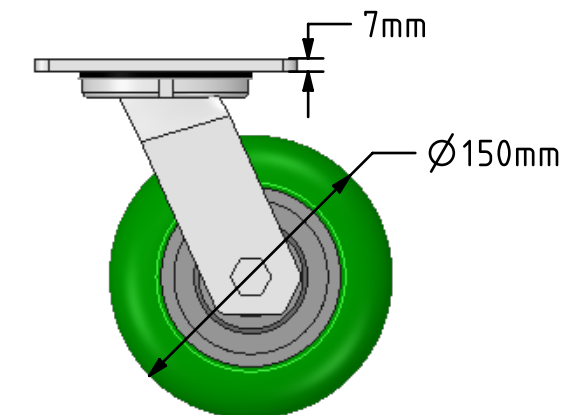
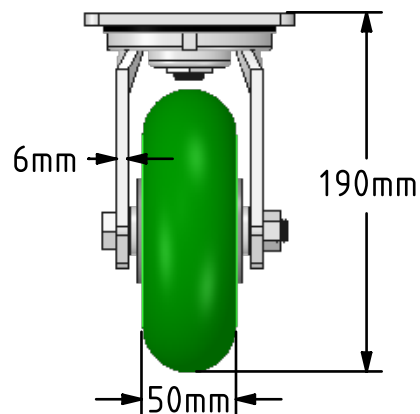
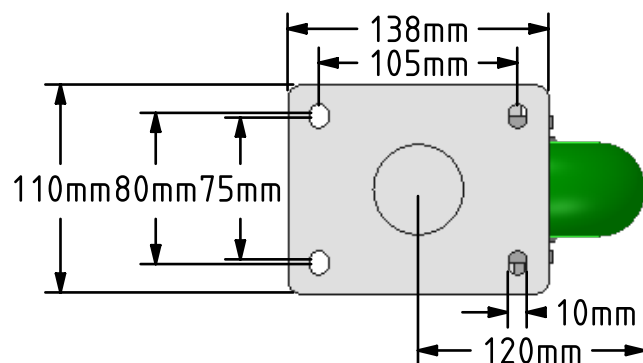


**DRAWING DISCLAIMER**


COPYRIGHT OF THIS DRAWING IS RESERVED BY BIL GROUP LTD. IT IS ISSUED ON CONDITION THAT IT IS NOT REPRODUCED, COPIED, OR DISCLOSED TO A THIRD PARTY EITHER WHOLLY OR IN PART WITHOUT THE CONSENT IN WRITING OF BIL GROUP LTD.

**Description:**

BZMJ150SRPTABJ

Fabricated white zinc ROHS plated swivel castor with a top plate fixing fitted with a round profile 85 shore A green polyurethane on aluminium centred wheel with ball bearings. Wheel diameter 150mm, tread width 50mm, overall height 190mm, top plate 135mm x 110mm, hole centres 105mm x 80/75mm Load capacity 575kg.



	NAME	DATE	 BIL Group Ltd, Porte Marsh Road, Calne Wiltshire, SN11 9BW, United Kingdom Tel +44 (0)1249 822 222 Fax: +44 (0)1249 822 300 www.bilgroup.co.uk	
DRAWN	Matt	07/06/17		
APPROVED BY	Tim W	07/06/17		
SCALE	1:4	07/06/17		
WEIGHT	3.482kg	07/06/17		
UNLESS OTHERWISE SPECIFIED DIMENSIONS ARE IN MILLIMETRES			SIZE	DWG NO.
Unspecified Tolerances Machining ± 0.25mm Fabrication ± 1mm			A4	BILCW03BZMJ150SRPTABJ__01
			FILE NAME	BILCW03BZMJ150SRPTABJ__01.PDF
			SHEET 1 OF 1	

TITLE

BZMJ150SRPTABJ

REV  
1