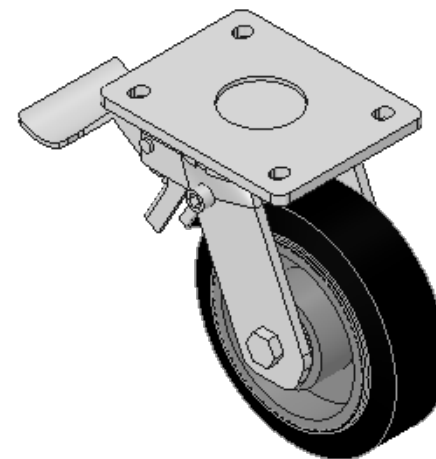
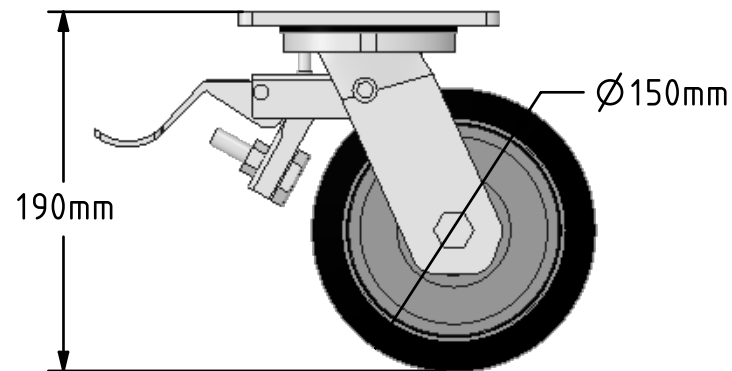
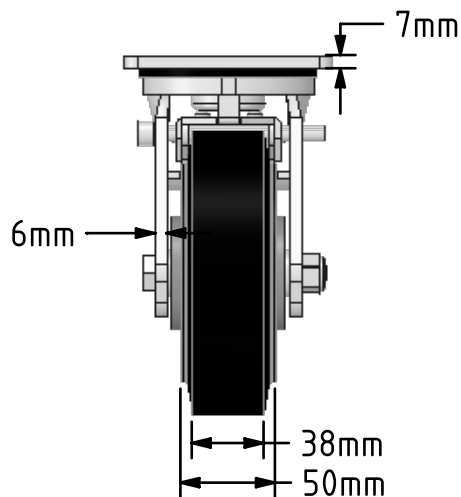
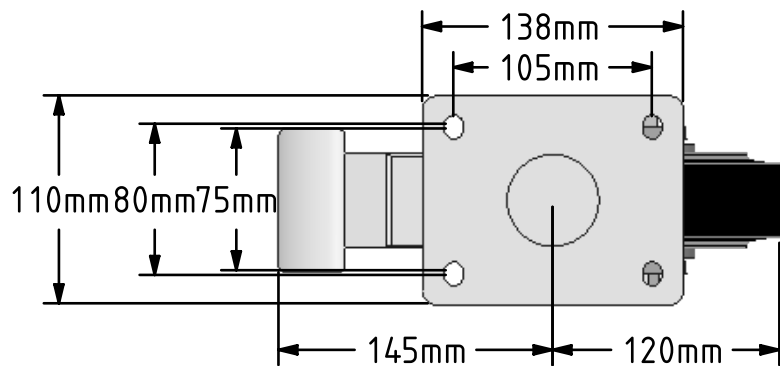


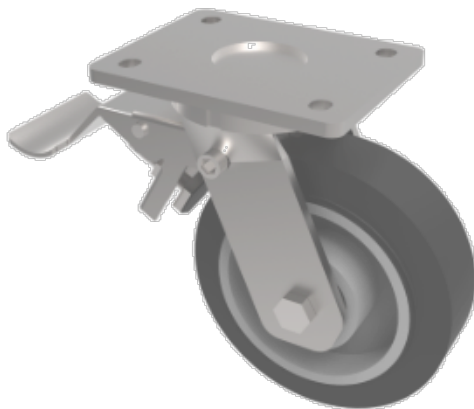
DRAWING DISCLAIMER
 COPYRIGHT OF THIS DRAWING IS RESERVED BY BIL GROUP LTD. IT IS ISSUED ON CONDITION THAT IT IS NOT REPRODUCED, COPIED, OR DISCLOSED TO A THIRD PARTY EITHER WHOLLY OR IN PART WITHOUT THE CONSENT IN WRITING OF BIL GROUP LTD.



Description:
 BZMJ150CUBJSWB

Fabricated white zinc ROHS plated swivel castor with a top plate fixing fitted with an elastic rubber on cast iron centred wheel with ball bearings and total lock brake. Wheel diameter 150mm, tread width 50mm, overall height 190mm, top plate 138mm x 110mm, hole centres 105mm x 80mm/75mm. Load capacity 400kg

- At 6 kph speed, the load of each wheel is advised to be 80% of the load at 4 kph
- At 10 kph speed, the load of each wheel is advised to be 55% of the load at 4 kph.
- At 16 kph speed, the load of each wheel is advised to be 45% of the load at 4kph.
- At 20 kph speed, the load of each wheel is advised to be 35% of the load at 4 kph.
- No data for elastic rubber wheel over 20 kph.



	NAME	DATE
DRAWN	Matt	20/10/16
APPROVED BY	Tim W	20/10/16
SCALE	1:4	20/10/16
WEIGHT	4.868kg	20/10/16

 BIL Group Ltd, Porte Marsh Road, Calne
 Wiltshire, SN11 9BW, United Kingdom
 Tel +44 (0)1249 822 222 Fax: +44 (0)1249 822 300
 www.bilgroup.eu

TITLE	BZMJ150CUBJSWB	
-------	----------------	--

UNLESS OTHERWISE SPECIFIED DIMENSIONS ARE IN MILLIMETRES

Unspecified Tolerances
 Machining ± 0.25mm
 Fabrication ± 1mm

SIZE	DWG NO.	REV
A4	BILCW03BZMJ150CUBJSWB_01	1
FILE NAME	BILCW03BZMJ150CUBJSWB_01.PDF SHEET 1 OF 1	