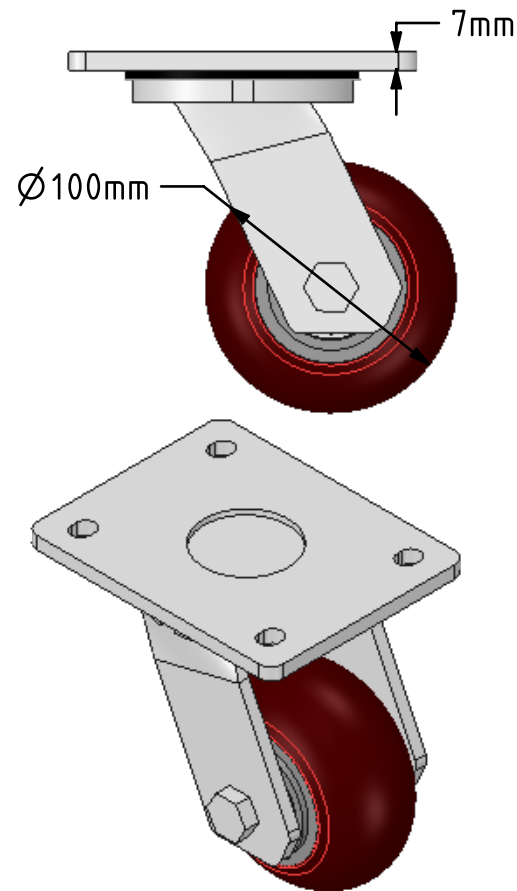
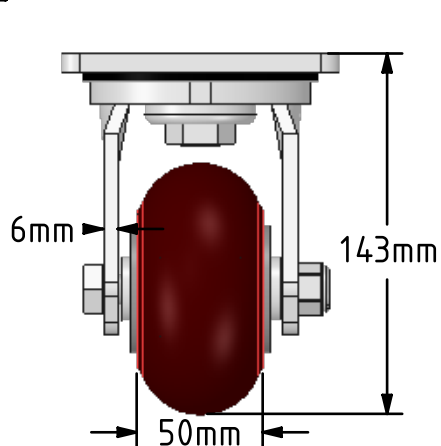
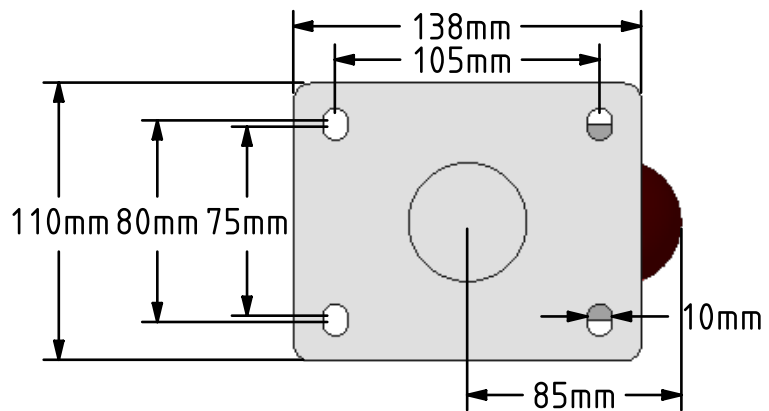


DRAWING DISCLAIMER  
 COPYRIGHT OF THIS DRAWING IS RESERVED BY BIL GROUP LTD. IT IS ISSUED ON CONDITION THAT IT IS NOT REPRODUCED, COPIED, OR DISCLOSED TO A THIRD PARTY EITHER WHOLLY OR IN PART WITHOUT THE CONSENT IN WRITING OF BIL GROUP LTD.



**Description:**  
 BZMJ100RPTABJ

Fabricated white zinc ROHS plated swivel castor with a top plate fixing fitted with a ergonomic brown polyurethane tyred on aluminium centred wheel with ball bearings. Wheel diameter 100mm, tread width 50mm, overall height 143mm, top plate 138mm x 110mm, Hole centres 105mm x 80mm/75mm. Load capacity 350kg.



	NAME	DATE
DRAWN	Matt	17/04/18
APPROVED BY	Tim W	17/04/18
SCALE	1:3	17/04/18
WEIGHT	2.588kg	17/04/18

UNLESS OTHERWISE SPECIFIED DIMENSIONS ARE IN MILLIMETRES  
 Unspecified Tolerances  
 Machining ± 0.25mm  
 Fabrication ± 1mm

 BIL Group Ltd, Porte Marsh Road, Calne Wiltshire, SN11 9BW, United Kingdom  
 Tel +44 (0)1249 822 222 Fax: +44 (0)1249 822 300  
 www.bilgroup.co.uk

TITLE  
**BZMJ100RPTABJ**

SIZE	DWG NO.	REV
A4	BILCW03BZMJ100RPTABJ_02	2

FILE NAME BILCW03BZMJ100RPTABJ\_02.PDF SHEET 1 OF 1