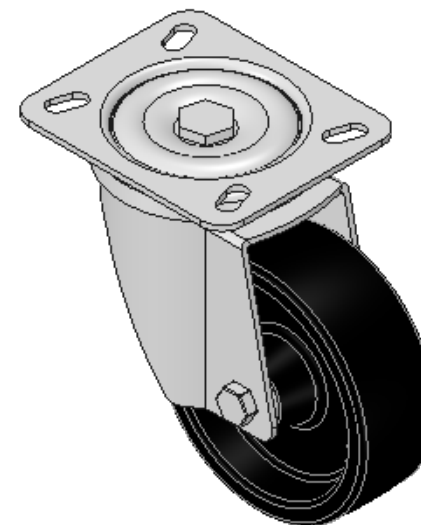
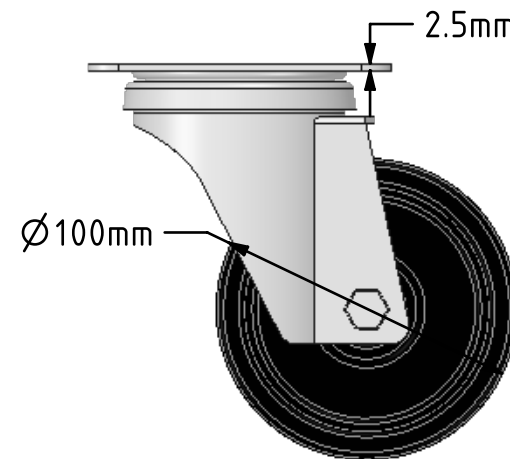
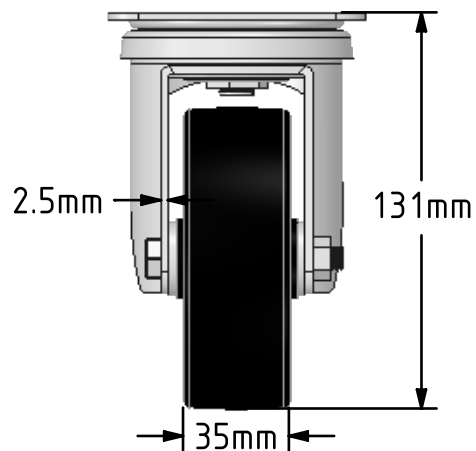
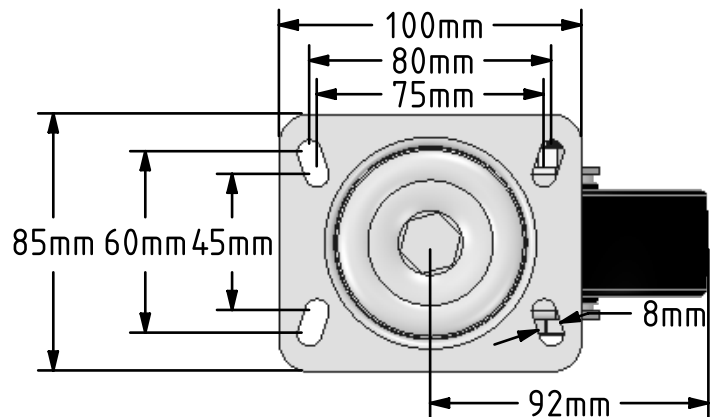



DRAWING DISCLAIMER  
 COPYRIGHT OF THIS DRAWING IS RESERVED BY BIL GROUP LTD. IT IS ISSUED ON CONDITION THAT IT IS NOT REPRODUCED, COPIED, OR DISCLOSED TO A THIRD PARTY EITHER WHOLLY OR IN PART WITHOUT THE CONSENT IN WRITING OF BIL GROUP LTD.



Description:  
 BZMH100LAN3

Pressed steel swivel castor with a top plate fixing fitted with a black Ditherm wheel. Wheel diameter 100mm, tread width 35mm, overall height 133mm, plate size 100mm x 85mm, hole centres 80mm x 60mm or 75mm x 45mm. Load capacity 160kg with a maximum temperature of 300c. REACH compliant, RoHS Compliant, USDA approved FDA approved.



	NAME	DATE	BIL Group Ltd, Porte Marsh Road, Calne Wiltshire, SN11 9BW, United Kingdom Tel +44 (0)1249 822 222 Fax: +44 (0)1249 822 300 www.bilgroup.co.uk	
DRAWN	Matt	05/03/18		
APPROVED BY	Chris	05/03/18		
SCALE	2:5	05/03/18		
WEIGHT	0.966kg	05/03/18		
UNLESS OTHERWISE SPECIFIED DIMENSIONS ARE IN MILLIMETRES			SIZE	DWG NO.
Unspecified Tolerances Machining ± 0.25mm Fabrication ± 1mm			A4	BILCW03BZMH100LAN3_01
			FILE NAME	BILCW03BZMH100LAN3_01.PDF
			TITLE	BZMH100LAN3
			REV	1
			SHEET	1 OF 1