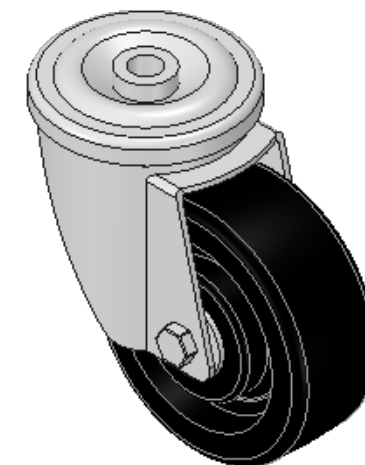
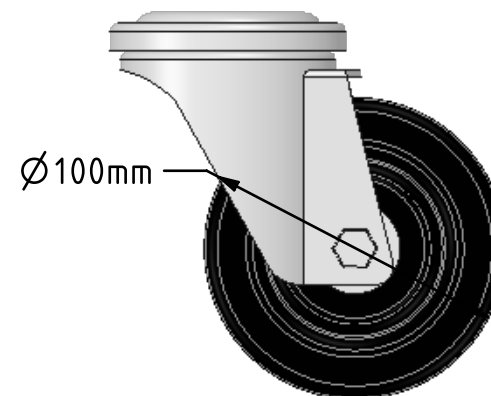
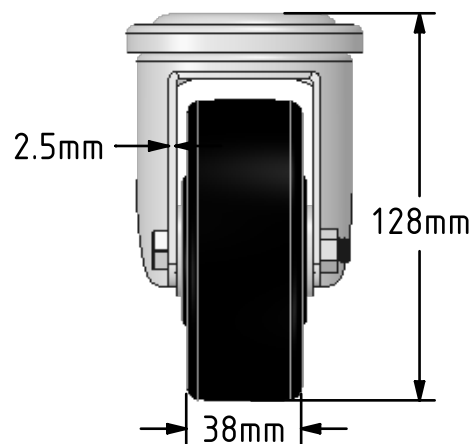
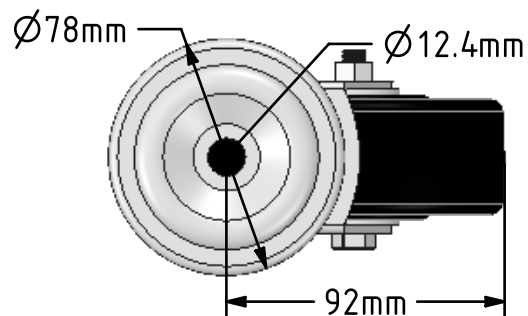


DRAWING DISCLAIMER
 COPYRIGHT OF THIS DRAWING IS RESERVED BY BIL GROUP LTD. IT IS ISSUED ON CONDITION THAT IT IS NOT REPRODUCED, COPIED, OR DISCLOSED TO A THIRD PARTY EITHER WHOLLY OR IN PART WITHOUT THE CONSENT IN WRITING OF BIL GROUP LTD.



Description:
 BZMH100ANBH12

Pressed steel swivel castor with a 12mm bolt hole fitted with a phenolic wheel with a plain bore. Wheel diameter 100mm, tread width 38mm, overall height 128mm, Load capacity 180kg with a maximum temperature of 120c.



	NAME	DATE
DRAWN	Matt	20/03/18
APPROVED BY	Chris	20/03/18
SCALE	2:5	20/03/18
WEIGHT	0.892kg	20/03/18

 BIL Group Ltd, Porte Marsh Road, Calne Wiltshire, SN11 9BW, United Kingdom
 Tel +44 (0)1249 822 222 Fax: +44 (0)1249 822 300
 www.bilgroup.co.uk

TITLE		
BZMH100ANBH12		
SIZE	DWG NO.	REV
A4	BILCW03BZMH100ANBH12_01	1
FILE NAME	SHEET 1 OF 1	
BILCW03BZMH100ANBH12_01.PDF		

UNLESS OTHERWISE SPECIFIED DIMENSIONS ARE IN MILLIMETRES
 Unspecified Tolerances
 Machining ± 0.25mm
 Fabrication ± 1mm