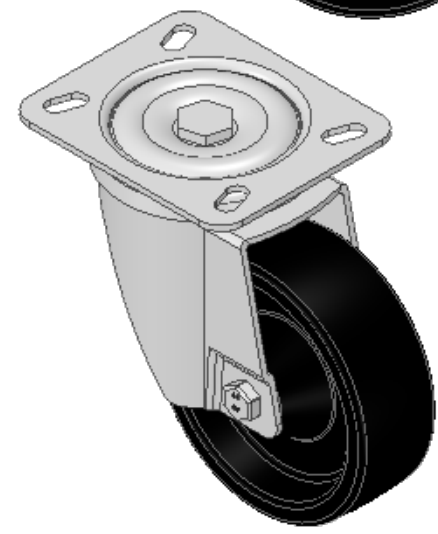
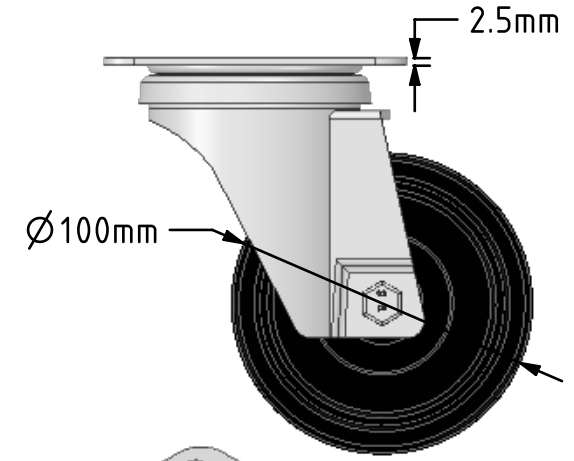
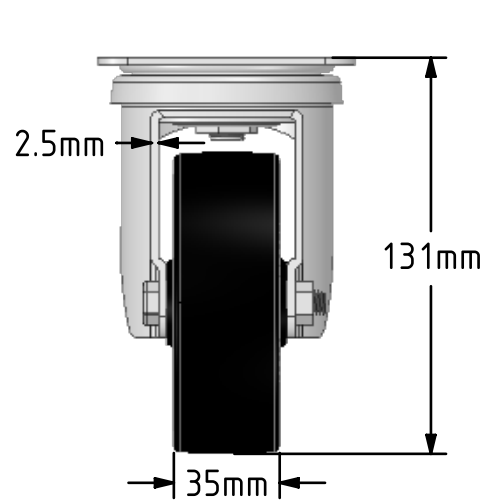
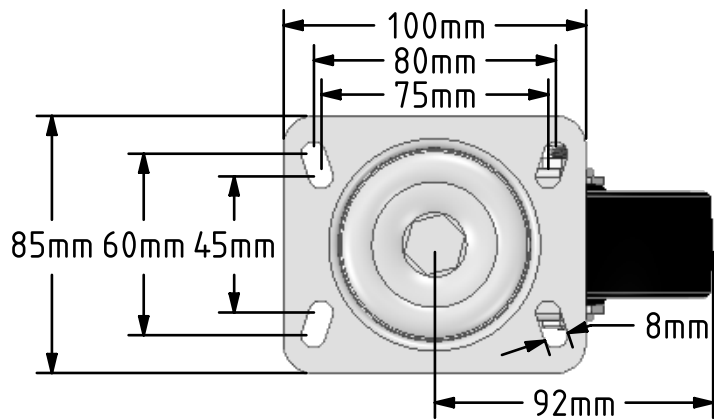


DRAWING DISCLAIMER
 COPYRIGHT OF THIS DRAWING IS RESERVED BY BIL GROUP LTD. IT IS ISSUED ON CONDITION THAT IT IS NOT REPRODUCED, COPIED, OR DISCLOSED TO A THIRD PARTY EITHER WHOLLY OR IN PART WITHOUT THE CONSENT IN WRITING OF BIL GROUP LTD.



Description:
 BZMH100AN3
 Pressed steel swivel castor with a top plate fixing fitted with a black Ditherm wheel. Wheel diameter 100mm, tread width 35mm, overall height 131mm, plate size 100mm x 85mm, hole centres 80mm x 60mm or 75mm x 45mm. Load capacity 200kg with a maximum temperature of 300c. REACH compliant, RoHS Compliant, USDA approved FDA approved.



	NAME	DATE
DRAWN	Matt	05/02/19
APPROVED BY	Tim W	05/02/19
SCALE	2.5	05/02/19
WEIGHT	1.013kg	05/02/19

BIL BIL Group Ltd, Porte Marsh Road, Calne Wiltshire, SN11 9BW, United Kingdom
 Tel +44 (0)1249 822 222 Fax: +44 (0)1249 822 300
 www.bilgroup.co.uk

TITLE
BZMH100AN3

UNLESS OTHERWISE SPECIFIED DIMENSIONS ARE IN MILLIMETRES
 Unspecified Tolerances
 Machining ± 0.25mm
 Fabrication ± 1mm

SIZE	DWG NO.	REV
A4	BILCW03BZMH100AN3_01	1
FILE NAME	BILCW03BZMH100AN3_01.PDF SHEET 1 OF 1	