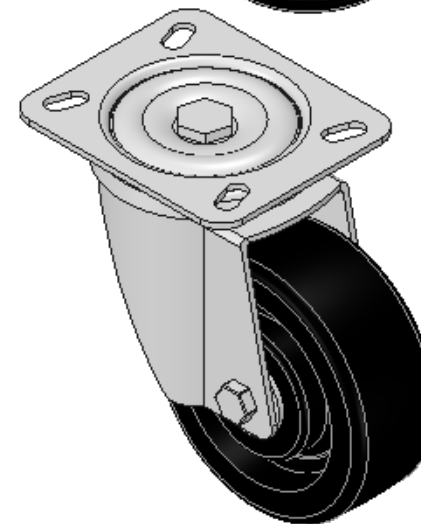
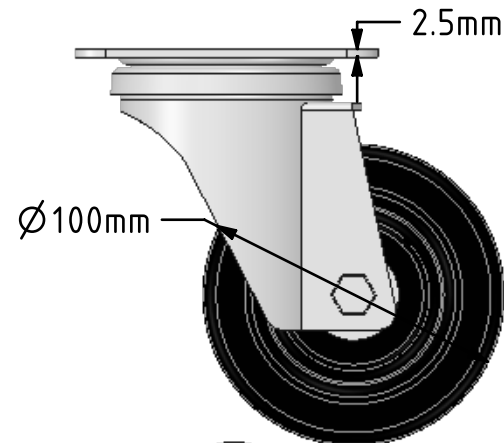
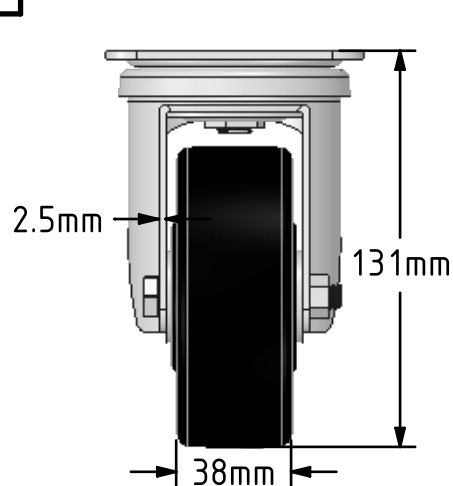
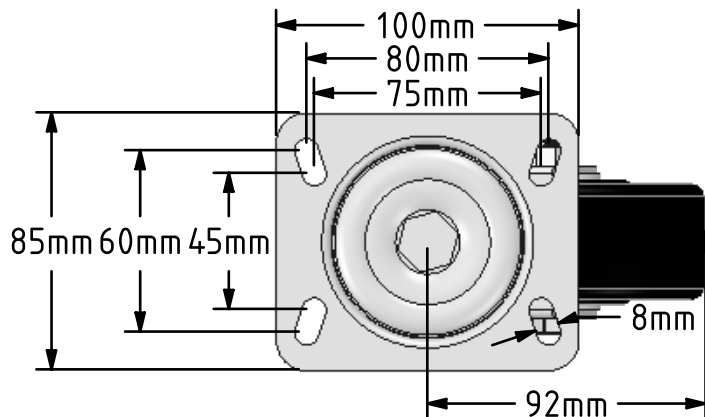


DRAWING DISCLAIMER  
 COPYRIGHT OF THIS DRAWING IS RESERVED BY BIL GROUP LTD. IT IS ISSUED ON CONDITION THAT IT IS NOT REPRODUCED, COPIED, OR DISCLOSED TO A THIRD PARTY EITHER WHOLLY OR IN PART WITHOUT THE CONSENT IN WRITING OF BIL GROUP LTD.



Description:  
 BZMH100AN

Pressed steel swivel castor with a top plate fixing fitted with a black phenolic wheel. Wheel diameter 100mm, tread width 38mm, overall height 133mm, plate size 100mm x 85mm, hole centres 80mm x 60mm or 75mm x 45mm. Load capacity 180kg with a maximum temperature of 120c.



	NAME	DATE
DRAWN	Matt	05/03/18
APPROVED BY	Chris	05/03/18
SCALE	2:5	05/03/18
WEIGHT	1.071kg	05/03/18

 BIL Group Ltd, Porte Marsh Road, Calne  
 Wiltshire, SN11 9BW, United Kingdom  
 Tel +44 (0)1249 822 222 Fax: +44 (0)1249 822 300  
 www.bilgroup.co.uk

TITLE	BZMH100AN	
-------	-----------	--

UNLESS OTHERWISE SPECIFIED DIMENSIONS ARE IN MILLIMETRES  
 Unspecified Tolerances  
 Machining ± 0.25mm  
 Fabrication ± 1mm

SIZE	DWG NO.	REV
A4	BILCW03BZMH100AN_01	1
FILE NAME	BILCW03BZMH100AN_01.PDF SHEET 1 OF 1	