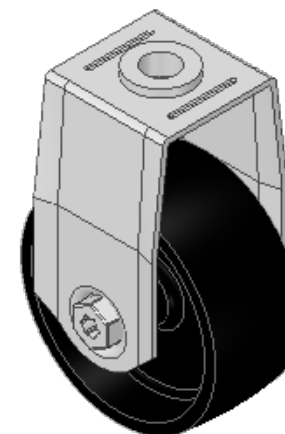
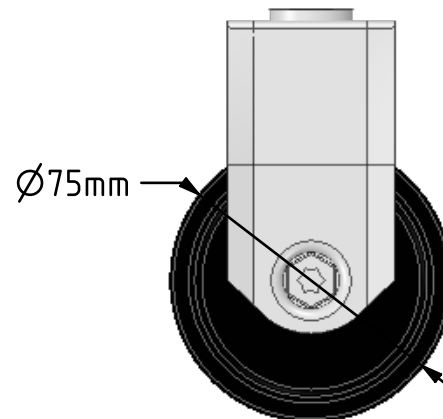
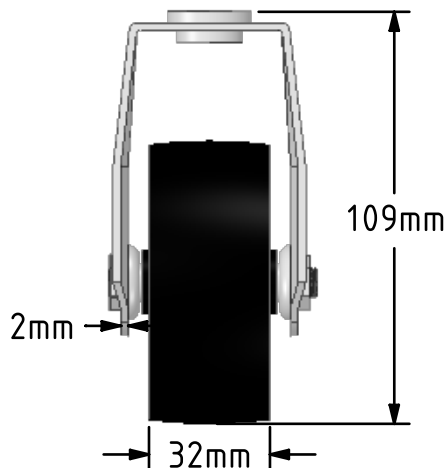
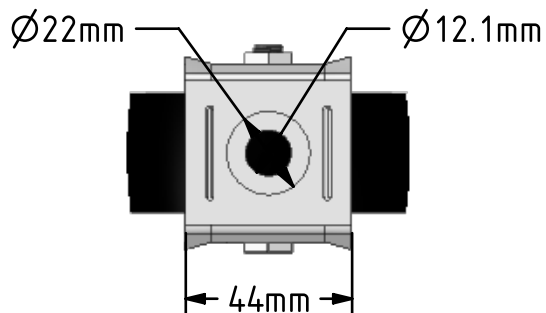


DRAWING DISCLAIMER
 COPYRIGHT OF THIS DRAWING IS RESERVED BY BIL GROUP LTD. IT IS ISSUED ON CONDITION THAT IT IS NOT REPRODUCED, COPIED, OR DISCLOSED TO A THIRD PARTY EITHER WHOLLY OR IN PART WITHOUT THE CONSENT IN WRITING OF BIL GROUP LTD.



Description:
 BZMF75PLBH12

Pressed steel swivel castor with a 12mm bolt hole fitted with a black polypropylene wheel with plain bearing. Wheel diameter 75mm, tread width 32mm, overall height 109mm, Load capacity 70kg.



	NAME	DATE
DRAWN	Matt	08/03/19
APPROVED BY	Chris	08/03/19
SCALE	1:2	08/03/19
WEIGHT	0.258kg	08/03/19

 BIL Group Ltd, Porte Marsh Road, Calne
 Wiltshire, SN11 9BW, United Kingdom
 Tel +44 (0)1249 822 222 Fax: +44 (0)1249 822 300
 www.bilgroup.co.uk

TITLE		REV
BZMF75PLBH12		
SIZE	DWG NO.	REV
A4	BILCW03BZMF75PLBH12__01	1
FILE NAME	SHEET 1 OF 1	
BILCW03BZMF75PLBH12__01.PDF		

UNLESS OTHERWISE SPECIFIED DIMENSIONS ARE IN MILLIMETRES

Unspecified Tolerances
 Machining ± 0.25mm
 Fabrication ± 1mm