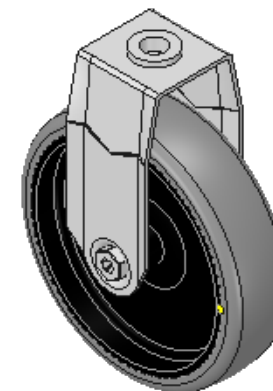
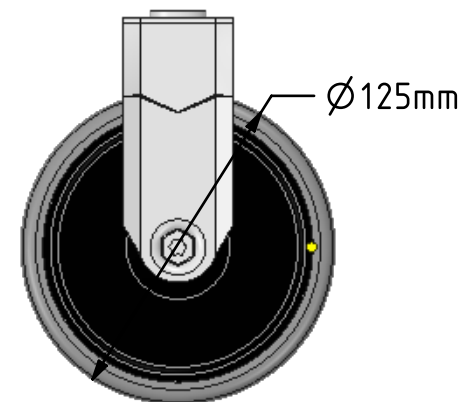
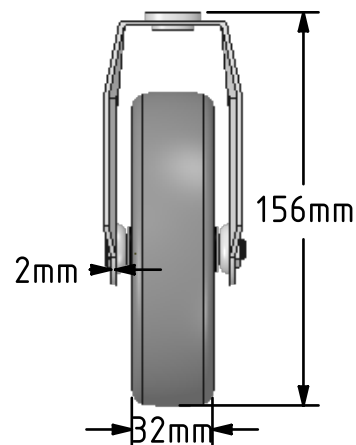
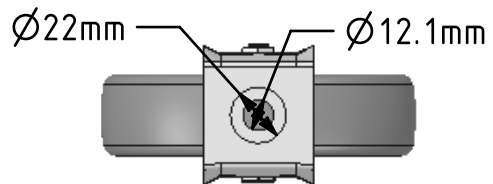


DRAWING DISCLAIMER
 COPYRIGHT OF THIS DRAWING IS RESERVED BY BIL GROUP LTD. IT IS ISSUED ON CONDITION THAT IT IS NOT REPRODUCED, COPIED, OR DISCLOSED TO A THIRD PARTY EITHER WHOLLY OR IN PART WITHOUT THE CONSENT IN WRITING OF BIL GROUP LTD.



Description:
 BZMF125GRECBH12

Pressed steel fixed castor with a 12mm bolt hole fitted with a grey electrically conductive rubber on grey polypropylene centred wheel, Wheel diameter 125mm, 32mm tread width, 156mm overall height, with a load capacity of 100kgs. Conductive offers a resistance R<10KΩ



	NAME	DATE
DRAWN	Matt	04/01/18
APPROVED BY	Tim W	04/01/18
SCALE	1:3	04/01/18
WEIGHT	0.408kg	04/01/18

 BIL Group Ltd, Porte Marsh Road, Calne
 Wiltshire, SN11 9BW, United Kingdom
 Tel +44 (0)1249 822 222 Fax: +44 (0)1249 822 300
 www.bilgroup.co.uk

TITLE
BZMF125GRECBH12

UNLESS OTHERWISE SPECIFIED DIMENSIONS ARE IN MILLIMETRES
 Unspecified Tolerances
 Machining ± 0.25mm
 Fabrication ± 1mm

SIZE	DWG NO.	REV
A4	BILCW03BZMF125GRECBH12_01	1
FILE NAME BILCW03BZMF125GRECBH12_01.PDF		SHEET 1 OF 1