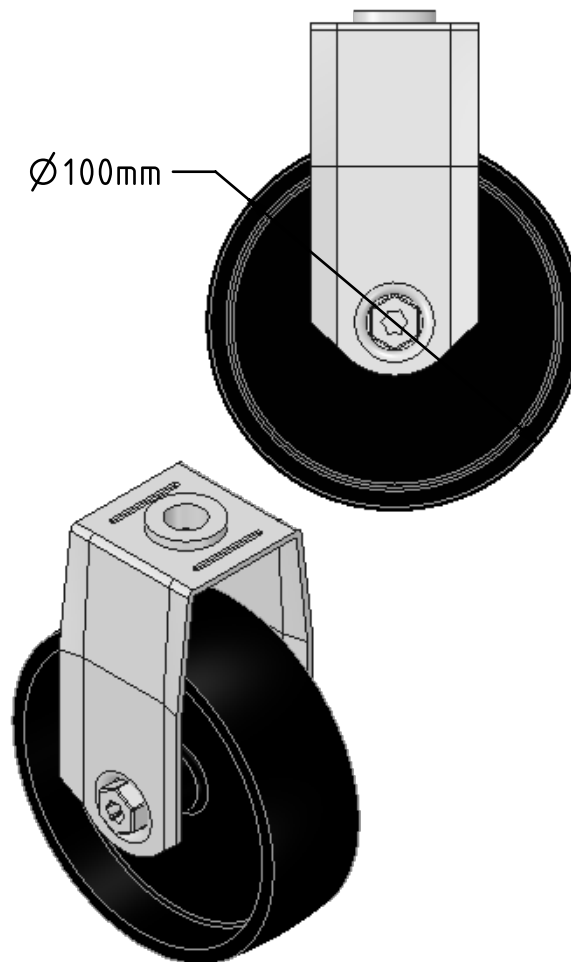
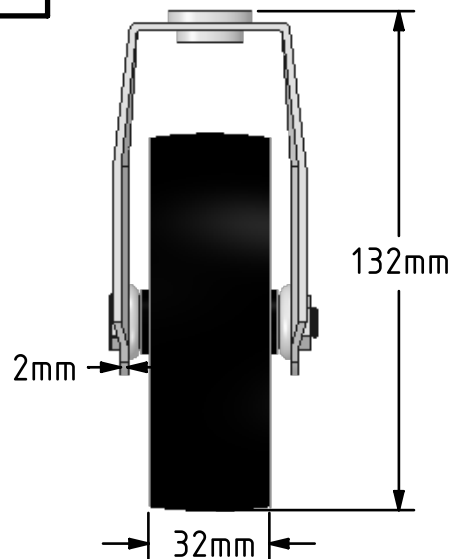
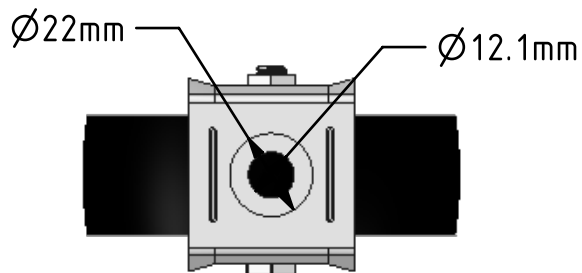


DRAWING DISCLAIMER
 COPYRIGHT OF THIS DRAWING IS RESERVED BY BIL GROUP LTD. IT IS ISSUED ON CONDITION THAT IT IS NOT REPRODUCED, COPIED, OR DISCLOSED TO A THIRD PARTY EITHER WHOLLY OR IN PART WITHOUT THE CONSENT IN WRITING OF BIL GROUP LTD.



Description:
 BZMF100PLBH12

Pressed steel fixed castor with a 12mm bolt hole fitted with a black polypropylene wheel with plain bore. Wheel diameter 100mm, tread width 32mm, overall height 132mm, Load capacity 90kg.



	NAME	DATE
DRAWN	Matt	20/06/18
APPROVED BY		20/06/18
SCALE	1:2	20/06/18
WEIGHT	0.262kg	20/06/18

UNLESS OTHERWISE SPECIFIED DIMENSIONS ARE IN MILLIMETRES

Unspecified Tolerances
 Machining $\pm 0.25\text{mm}$
 Fabrication $\pm 1\text{mm}$

 BIL Group Ltd, Porte Marsh Road, Calne
 Wiltshire, SN11 9BW, United Kingdom
 Tel +44 (0)1249 822 222 Fax: +44 (0)1249 822 300
 www.bilgroup.co.uk

TITLE
 BZMF100PLBH12

SIZE	DWG NO.	REV
A4	BILCW03BZMF100PLBH12__01	1

FILE NAME BILCW03BZMF100PLBH12__01.SDOC SHEET 1 OF 1